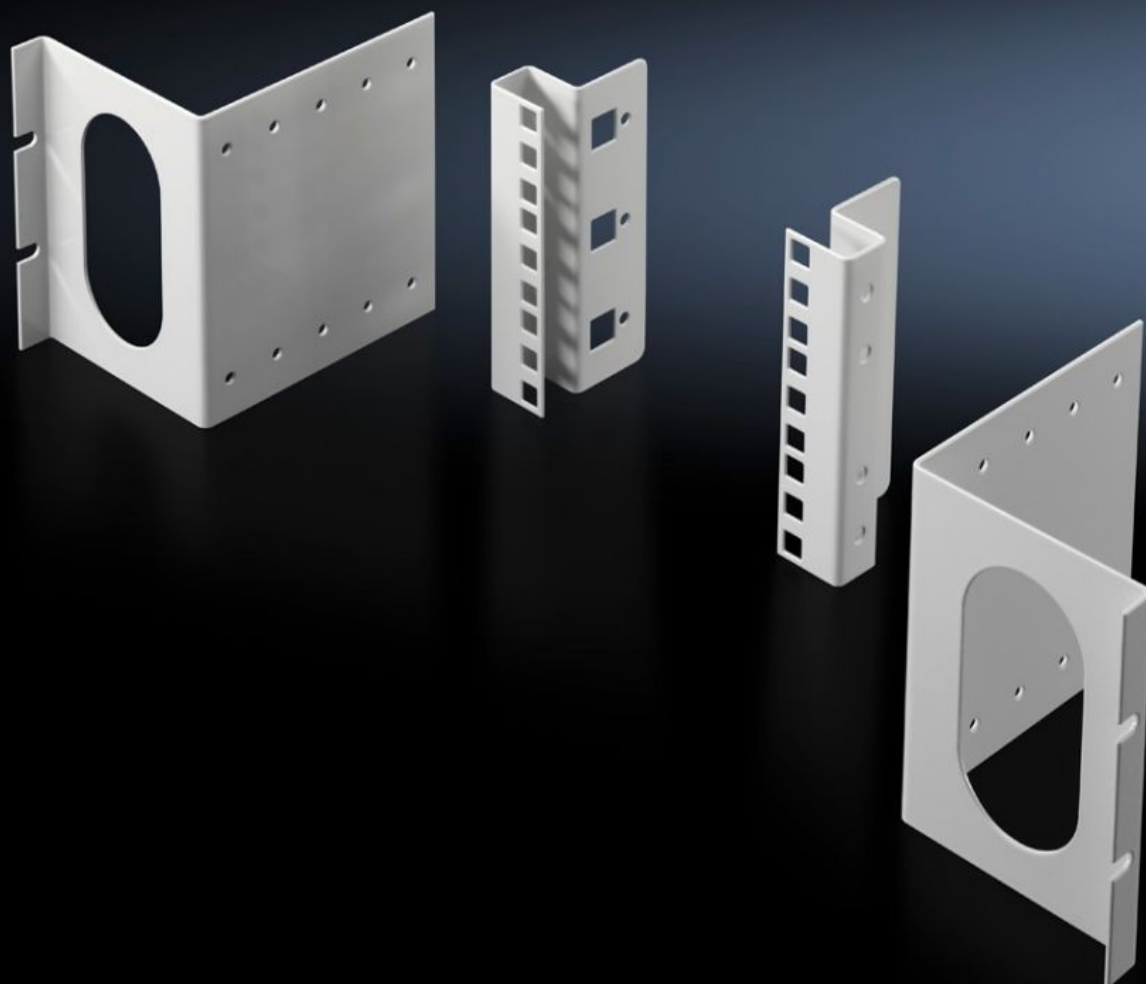


Rittal – The System.

Faster – better – everywhere.



DK 7246.100 Adaptor kit, 3 U

State: 16/09/2025 (Source: rittal.com/uae-en)

ENCLOSURES

POWER DISTRIBUTION

CLIMATE CONTROL

IT INFRASTRUCTURE

SOFTWARE & SERVICES

FRIEDHELM LOH GROUP



DK 7246.100 - Adaptor kit, 3 U for enclosure width 800 mm

For fastening individual 482.6 mm (19") components, or as an additional mounting facility at the rear of the enclosure.



Features

Model No.	DK 7246.100
Design	Installation position, centre
Product description	For fastening individual 482.6 mm (19") components, or as an additional mounting facility at the rear of the enclosure. The mounting level in the adaptor angle can be adjusted in 25 mm increments by up to 100 mm in the depth, leaving sufficient space for baying where patch panels or splicing boxes are used. Attachment is on the inner mounting level of the frame section or a suitable chassis in the enclosure depth.
Material	Sheet steel
Colour	RAL 7035
Units	3 U
Installation dimensions	Installation depth for components: 482.6 mm Installation width for components: 19"
Packs of	2 pc(s).
Net weight	1.14
Gross weight	1.304
PCF per pack (cradle-to-gate)	5 kg CO2 eq (Cat B)

Features

Note on PCF category	Category B: PCF value (cradle-to-gate) based on the product weight, approximately calculated and self-declared
Customs tariff number	73269098
EAN	4028177186798
ETIM 9	EC002625
ECLASS 8.0	27189234

Tender text

3 U 482.6 mm (19") adaptor, RAL 7035 in centre
Mounting position: 482.6 mm (19"), centred
Dimensions (W x H): 129 mm x 135 mm
Material: Sheet steel, spray finished in RAL 7035