

Rittal – The System.

Faster – better – everywhere.



DK 7507.120 FlatBox

State: 04/07/2026 (Source: rittal.com/uae-en)

ENCLOSURES

POWER DISTRIBUTION

CLIMATE CONTROL

IT INFRASTRUCTURE

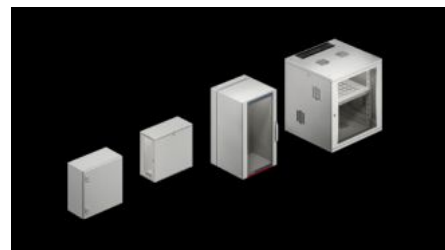
SOFTWARE & SERVICES

FRIEDHELM LOH GROUP



DK 7507.120 - FlatBox

Flat-packed enclosure. For optimum access and flexible use as a wall-mounted or floor-standing enclosure.



Features

Model No.	DK 7507.120
Design	with 482.6 mm (19") mounting frame
Product description	For flexible use as a wall-mounted or floor-standing enclosure.
Benefits	Tool-free quick assembly System assembly on the open 482.6 mm (19") frame
Material	Sheet steel Viewing window: Single-pane safety glass, 3 mm
Surface finish	Powder-coated
Colour	RAL 7035
Supply includes	Flat-packed enclosure 1 wall section 2 basic supports 2 roof/base plates, with cut-outs for cable entry via brush strips 2 side panels, lockable 1 glazed door, lockable, security lock 3524 E, door hinge point selectable Connection components for tool-free, fast assembly Earthing kit for system-compatible earthing of all enclosure parts 482.6 mm (19") mounting frame
Units	12 U
Dimensions	Width: 600 mm Height: 625 mm Depth: 600 mm

Features

Installation height for components	12 U
Load capacity	max. 600 N
Note	Max. installation depth: Depth - 58 mm to rear panel Max. distance between two 482.6 mm (19") levels: Depth - 104 mm The maximum door opening angle is 210°
Basic material	Sheet steel
Packs of	1 pc(s).
Net weight	29.45 kg
Gross weight	30.18 kg
PCF per pack (cradle-to-gate)	118.1 kg CO2 eq (Cat B)
Note on PCF category	Category B: PCF value (cradle-to-gate) based on the product weight, approximately calculated and self-declared
Customs tariff number	94032080
ETIM 9	EC002500
ETIM 8	EC002500
ECLASS 8.0	27180208
Product description	DK FlatBox, WHD: 600x625x600 mm, 12 U, with 482.6 mm (19") mounting frame

Approvals

Explanations	Manufacturer's declaration
--------------	----------------------------

Tender text

12 U IT-wall/standing enclosure in flat pack form for tool free assembly

12 U wall/standing enclosure with depth adjustable 482.6mm (19") mounting frame at the front in the 25mm pitch pattern, consisting of wall part, two carrying bars, roof and gland plate, each with cut out for feeding cable, covered with brush strips, two 482.6mm (19") mounting angles, two lockable side panels and a lockable glazed door.

The enclosure is built up with snap connecting elements without tools. The symmetrical basic construction makes a build free of confusion possible. Freely selectable doorstop. Static load capacity of the 482.6mm (19") level: 5 kg/U. Side panels, roof and base frame each with two ventilation fields for passive ventilation, an extension to active air conditioning is possible with fan motors which can be obtained separately, ventilation fields which are not required can be closed with cover plates which may be obtained separately. Use in the form of a standing enclosure is possible with any levelling feet. Additional rear 482.6mm (19") mounting level possible with horizontal rail sets which may be obtained separately.

Material:

Sheet steel, glazed door with pane made of single pane safety glass

Surface finish:

Powder-coated in RAL 7035

Dimensions (W x H x D):

600 x 625 x 600 mm, 12 U