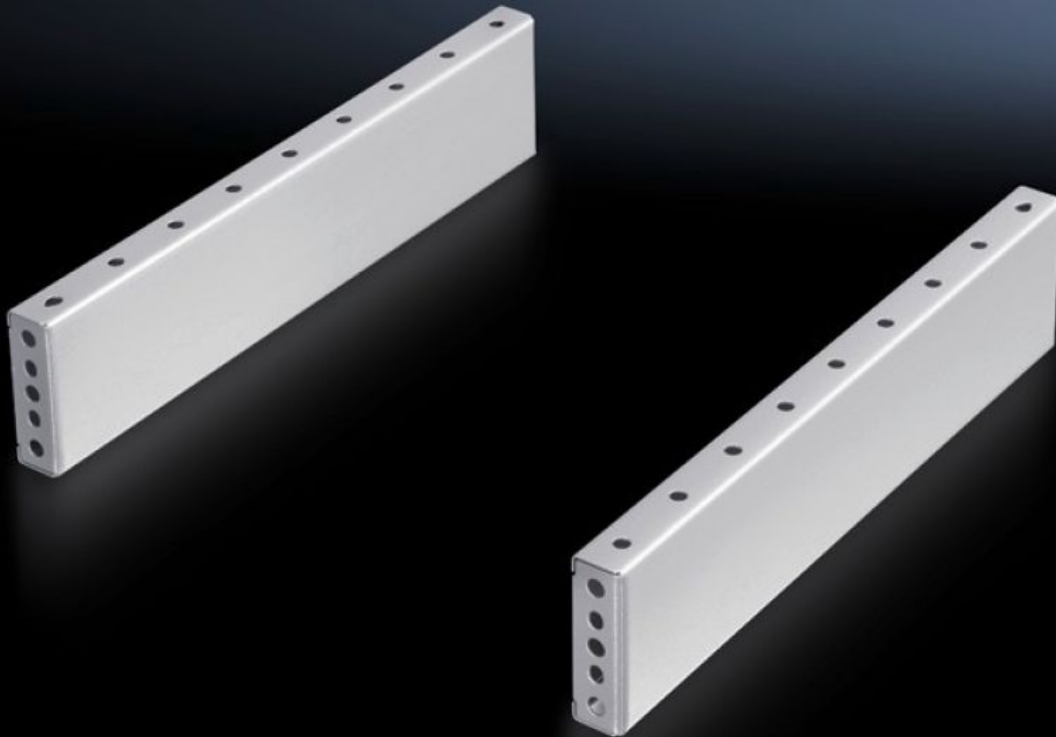


**Rittal – The System.**

Faster – better – everywhere.



**TS 8601.015**

**Base/plinth trim panels, side, 100 mm**

State: 21/06/2026 (Source: [rittal.com/uae-en](http://rittal.com/uae-en))

ENCLOSURES

POWER DISTRIBUTION

CLIMATE CONTROL

IT INFRASTRUCTURE

SOFTWARE & SERVICES

FRIEDHELM LOH GROUP



# TS 8601.015 - Base/plinth trim panels, side, 100 mm for base/plinth components front and rear

For mounting between the base/plinth components. At 200 mm height, two 100 mm base/plinth trims may be used. Base/plinth trims may be installed rotated through 90° in order to stabilise bayed base/plinth components.

## Features

Model No.	TS 8601.015
Product description	For mounting between the base/plinth components. At 200 mm height, two 100 mm base/plinth trim panels may be used.
Material	Sheet steel
Surface finish	Spray-finished
Colour	RAL 7035
Supply includes	2 base/plinth trim panels Assembly parts
Assembly instruction	Base/plinth trim panels, side, 100 mm, may be installed rotated through 90° to stabilise bayed base/plinth components. The base/plinth baying bracket is required for this purpose
Dimensions	Height: 100 mm
To fit	Enclosure type: TS: = 1,000 mm Enclosure type: SE Enclosure type: CM Enclosure type: TP Enclosure type: PC Enclosure type: IW Enclosure type: TS IT
Packs of	2 pc(s).
Net weight	3.442 kg
Customs tariff number	94039910
ECLASS 8.0	27182003

# Features

---

Product description

TS Trim panel, sides, H: 100 mm, for W: 1000 mm, RAL 7035, sheet steel

## Tender text

Base/plinth side trim, for TS, enclosure depth 1000 mm

Base/plinth trim for finishing off the side of the base/plinth in connection with TS base/plinth components. To stabilise bayed base/plinths and for easy cable routing between the enclosures.

May be installed rotated through 90°.

For this a base/plinth baying bracket TS 8601.100 is also required.

Material: Sheet steel, spray-finished

Colour: RAL 7035

Trim height: 100 mm

For enclosure depth: 1000 mm