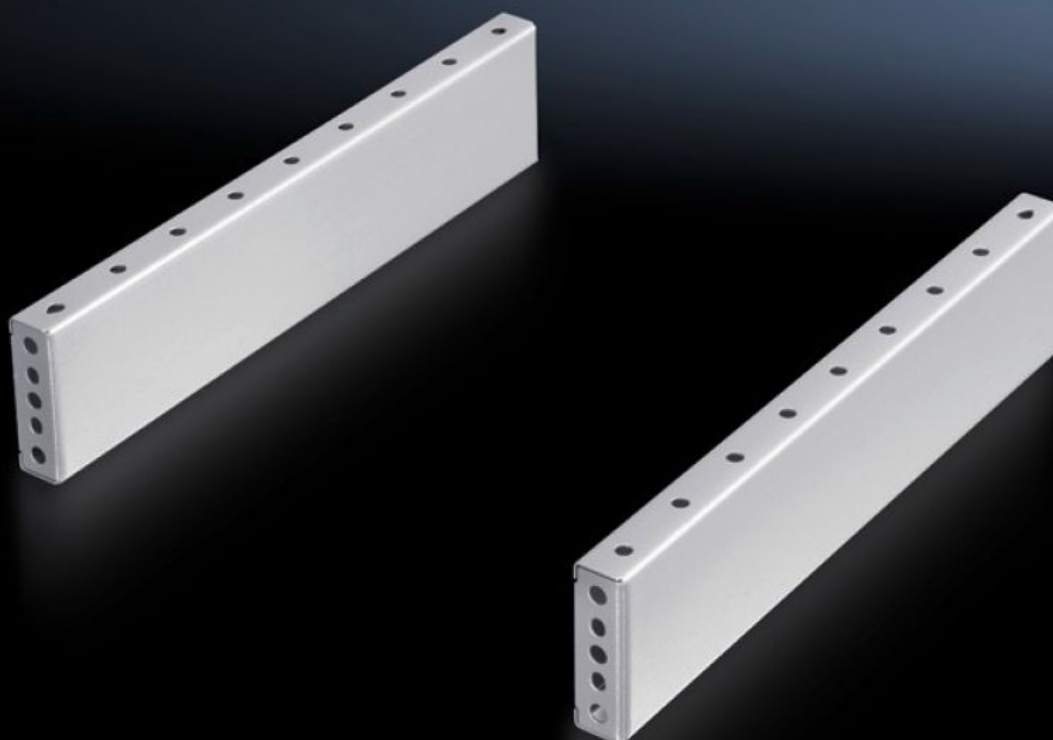


Rittal – The System.

Faster – better – everywhere.



TS 8601.085

Base/plinth trim panels, side, 100 mm

State: 02/02/2026 (Source: rittal.com/uae-en)

ENCLOSURES

POWER DISTRIBUTION

CLIMATE CONTROL

IT INFRASTRUCTURE

SOFTWARE & SERVICES

FRIEDHELM LOH GROUP



TS 8601.085 - Base/plinth trim panels, side, 100 mm for base/plinth components front and rear

For mounting between the base/plinth components. At 200 mm height, two 100 mm base/plinth trims may be used. Base/plinth trims may be installed rotated through 90° in order to stabilise bayed base/plinth components.

Features

Model No.	TS 8601.085
Product description	For mounting between the base/plinth components. At 200 mm height, two 100 mm base/plinth trim panels may be used.
Material	Sheet steel
Surface finish	Spray-finished
Colour	RAL 7035
Supply includes	2 base/plinth trim panels Assembly parts
Assembly instruction	Base/plinth trim panels, side, 100 mm, may be installed rotated through 90° to stabilise bayed base/plinth components. The base/plinth baying bracket is required for this purpose
Dimensions	Height: 100 mm
To fit	Enclosure type: TS: = 800 mm Enclosure type: SE Enclosure type: CM Enclosure type: TP Enclosure type: PC Enclosure type: IW Enclosure type: TS IT
Packs of	2 pc(s).
Net weight	2.8
Gross weight	3.46
Customs tariff number	94039910

Features

EAN	4028177232686
E-Number Sweden	E7239657
ECLASS 8.0	27182003

Tender text

Base/plinth side trim, for TS, enclosure depth 1000 mm
Base/plinth trim for finishing off the side of the
base/plinth in connection with TS base/plinth
components. To stabilise bayed base/plinths
and for easy cable routing between the enclosures.
May be installed rotated through 90°.
For this a base/plinth baying bracket TS 8601.100
is also required.

Material: Sheet steel, spray-finished

Colour: RAL 7035

Trim height: 100 mm

For enclosure depth: 800 mm