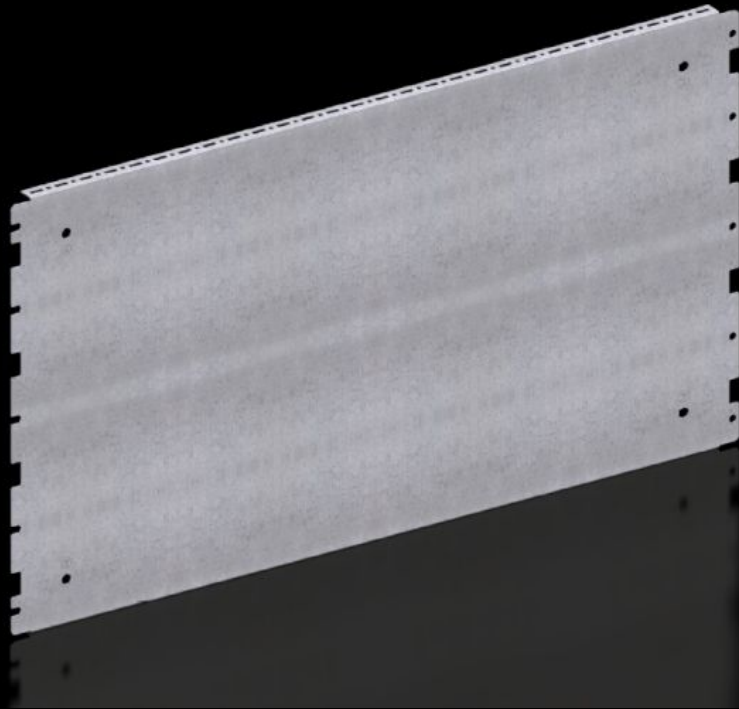


Rittal – The System.

Faster – better – everywhere.



VX 8617.664

Partial assembly plate

State: 22/05/2026 (Source: rittal.com/uae-en)

ENCLOSURES

POWER DISTRIBUTION

CLIMATE CONTROL

IT INFRASTRUCTURE

SOFTWARE & SERVICES

FRIEDHELM LOH GROUP



VX 8617.664 - Partial assembly plate for VX, VX SE

To accommodate additional components inside the enclosure. Partial assembly plates are extremely versatile, providing a platform for a diverse range of applications.



Features

Model No.	VX 8617.664
Product description	To accommodate additional components inside the enclosure. Partial assembly plates are extremely versatile, providing a platform for a diverse range of applications.
Benefits	For individual interior installation, system punchings are additionally provided in the edge fold.
Material	Sheet steel, 1.5 mm
Surface finish	Zinc-plated
Supply includes	Assembly parts
Installation options	Attach directly onto the enclosure section
Note	In VX SE, on the enclosure section in conjunction with VX adaptor rail
Dimensions	Width: 738 mm Height: 398 mm
To fit enclosure type	VX VX SE
To fit	Enclosure type: VX VX SE Width/depth: 800 mm
Packs of	1 pc(s).

Features

Net weight	3.8 kg
Gross weight	3.92 kg
Customs tariff number	73269098
ETIM 9	EC000213
ECLASS 8.0	27409216
Product description	VX Partial assembly plate, dimensions: 800x400 mm