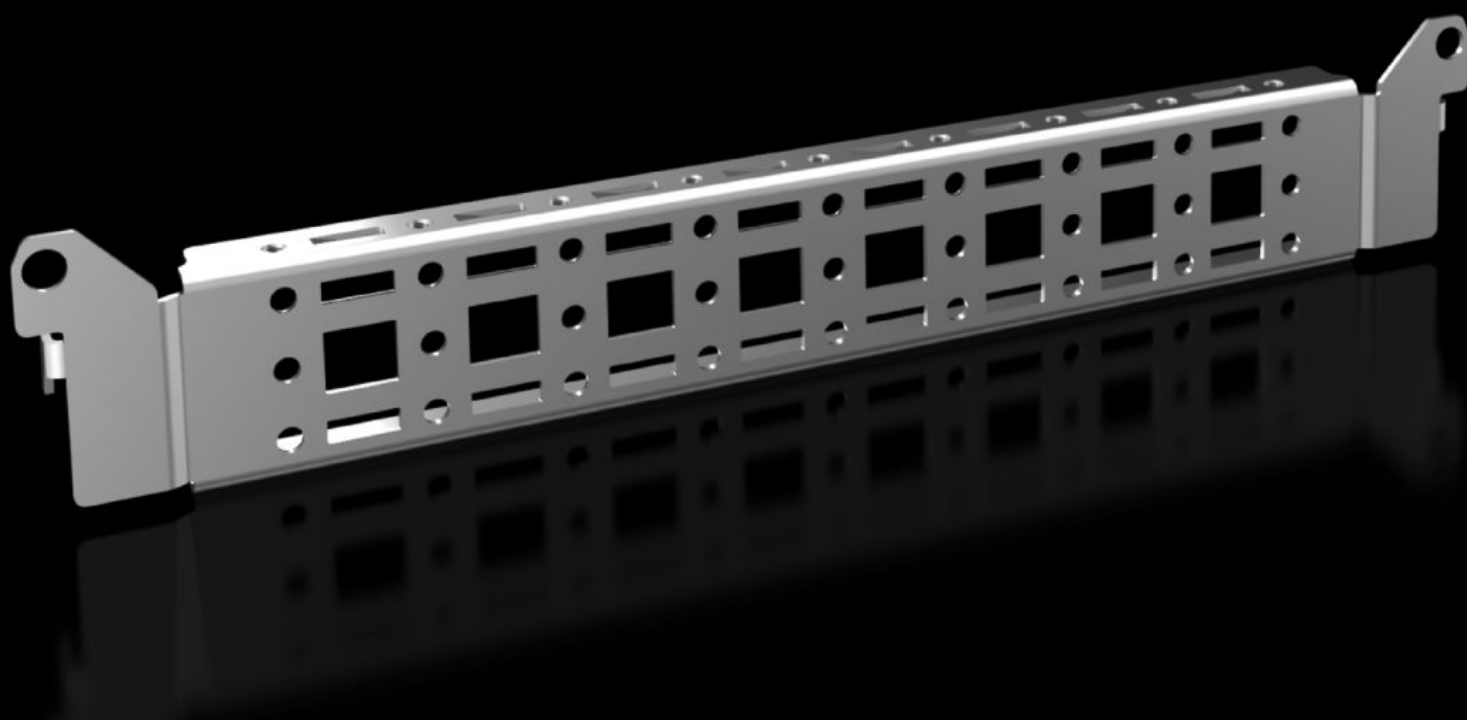


Rittal – The System.

Faster – better – everywhere.



VX 8619.700

Punched section with mounting flange, 14 x 39 mm

State: 02/09/2025 (Source: rittal.com/uae-en)

ENCLOSURES

POWER DISTRIBUTION

CLIMATE CONTROL

IT INFRASTRUCTURE

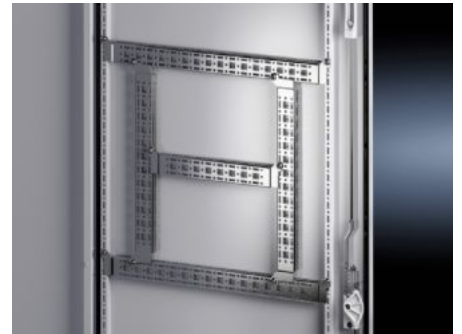
SOFTWARE & SERVICES

FRIEDHELM LOH GROUP



VX 8619.700 - Punched section with mounting flange, 14 x 39 mm for VX, VX SE, PC, IW, AX

For securing cable ducts, cable conduit holders, equipment installed on the door, etc.



Features

Model No.	VX 8619.700
Product description	For attaching cable ducts, cable conduit holders, equipment installed on the door, etc.
Material	Sheet steel
Surface finish	Zinc-plated
Supply includes	Assembly parts
Distance between fixing points	275 mm
To fit door width	400 mm
VX installation options	In door width 400 mm
AX installation options	In enclosure width 300 mm and in enclosure height 400 mm, in conjunction with rail for interior installation AX
AX stainless steel installation options	In enclosure width 300 mm
Installation options, AX plastic	In door width 400 mm
Installation options for 3-part AX	In enclosure depth 473 mm

Features

CX installation options	In the pedestal, in the enclosure depth, 400 mm In one-piece console pedestal, in enclosure depth 400 mm
Assembly instruction	For installation in AX sheet steel, only in conjunction with rail for interior installation AX
Note	For installing your own components on the punched section with mounting flange, metal screws or self-tapping M5 screws are required
To fit	Enclosure type: VX AX AX plastic AX wall-mounted enclosure, 3-part CX one-piece console CX pedestal Suitable for width or height or depth: 400 mm
Packs of	4 pc(s).
Net weight	0.68
Gross weight	0.686
Customs tariff number	73269098
EAN	4028177924659
E-Number Sweden	E3465280
ETIM 9	EC002620
ECLASS 8.0	27189234