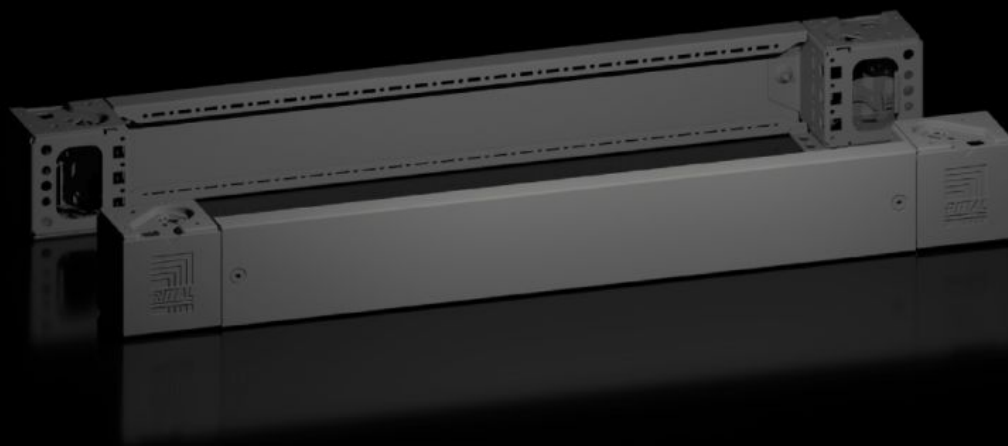
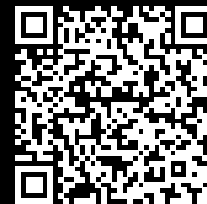


Rittal – The System.

Faster – better – everywhere.



VX 8660.004

Base/plinth corner pieces with base/plinth trim panels, front and rear

State: 13/08/2025 (Source: rittal.com/uae-en)

ENCLOSURES

POWER DISTRIBUTION

CLIMATE CONTROL

IT INFRASTRUCTURE

SOFTWARE & SERVICES

FRIEDHELM LOH GROUP



VX 8660.004 - Base/plinth corner pieces with base/plinth trim panels, front and rear for base/plinth system VX, sheet steel

Base/plinth corner pieces with trim panels for flexible cable entry.



Features

Model No.	VX 8660.004
Benefits	Reliable – Excellent stability of the base/plinth Flexible – Countless interior installation options with VX accessories Simple – Flush termination between the baying points
Material	Base/plinth corner piece: Sheet steel Base/plinth trim panel front/rear: Sheet steel Corner and baying cover: Plastic
Colour	RAL 9005
Supply includes	4 corner covers Assembly parts 4 base/plinth corner pieces, 100 mm high 2 base/plinth trim panels, front/rear, 100 mm high
Note	Side base/plinth trim panels finish off a base/plinth unit or provide additional stabilisation between base/plinths or enable interior configuration of the base/plinth
Dimensions	Height: 100 mm

Features

To fit	Enclosure type: VX VX IT VX SE TX CableNet TS TS IT TP PC IW CX Width: = 850 mm
Type rating to UL 50E	Type 1 Type 12
Weight/pack	5.55 kg
Packs of	2 pc(s).
Net weight	5.36
Gross weight	5.551
PCF per pack (cradle-to-gate)	21.1 kg CO2 eq (Cat B)
Note on PCF category	Category B: PCF value (cradle-to-gate) based on the product weight, approximately calculated and self-declared
Customs tariff number	94039910
EAN	4028177978065
ETIM 9	EC000721
ETIM 8	EC000721
ECLASS 8.0	27182003

Approvals

Approvals	UL + C-UL - FTTA
-----------	------------------