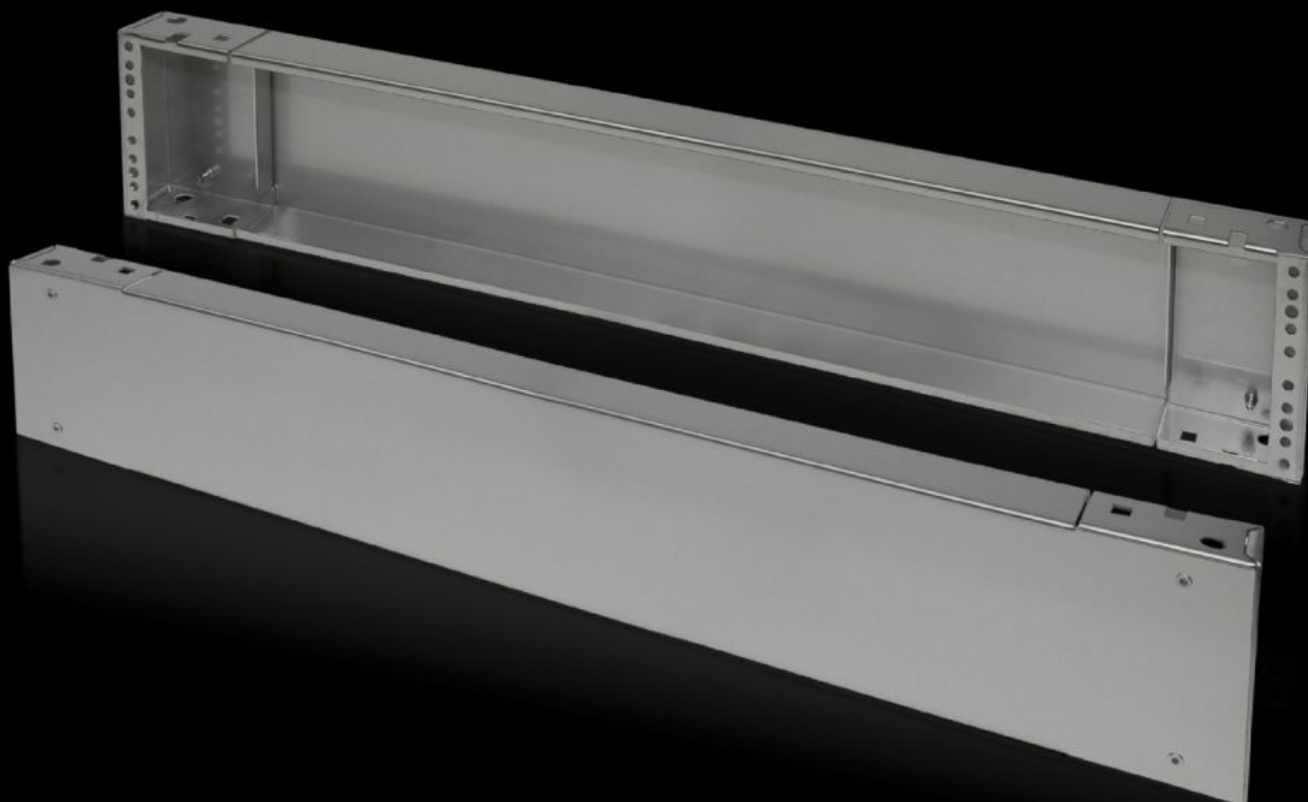
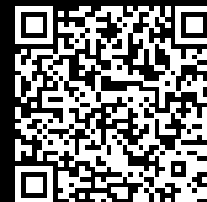


Rittal – The System.

Faster – better – everywhere.



TS 8702.200

Base/plinth components, front and rear, 200 mm

State: 24/08/2025 (Source: rittal.com/uae-en)

ENCLOSURES

POWER DISTRIBUTION

CLIMATE CONTROL

IT INFRASTRUCTURE

SOFTWARE & SERVICES

FRIEDHELM LOH GROUP



TS 8702.200 - Base/plinth components, front and rear, 200 mm Stainless steel for TS, VX SE

Base/plinth components, front and rear, stainless steel, 200 mm.

Features

| | |
|-----------------------|--|
| Model No. | TS 8702.200 |
| Material | Stainless steel 1.4301 (AISI 304) |
| Surface finish | Brushed, grain 400 |
| Supply includes | 1 trim panel front/rear 2 corner pieces with removable trim panel Assembly parts for mounting on the enclosure |
| Dimensions | Height: 200 mm |
| To fit | Enclosure type: TS: = 1,200 mm |
| Packs of | 2 pc(s). |
| Net weight | 14.078 |
| Gross weight | 14.9 |
| Customs tariff number | 94039910 |
| EAN | 4028177299986 |
| ETIM 9 | EC000721 |
| ECLASS 8.0 | 27182003 |