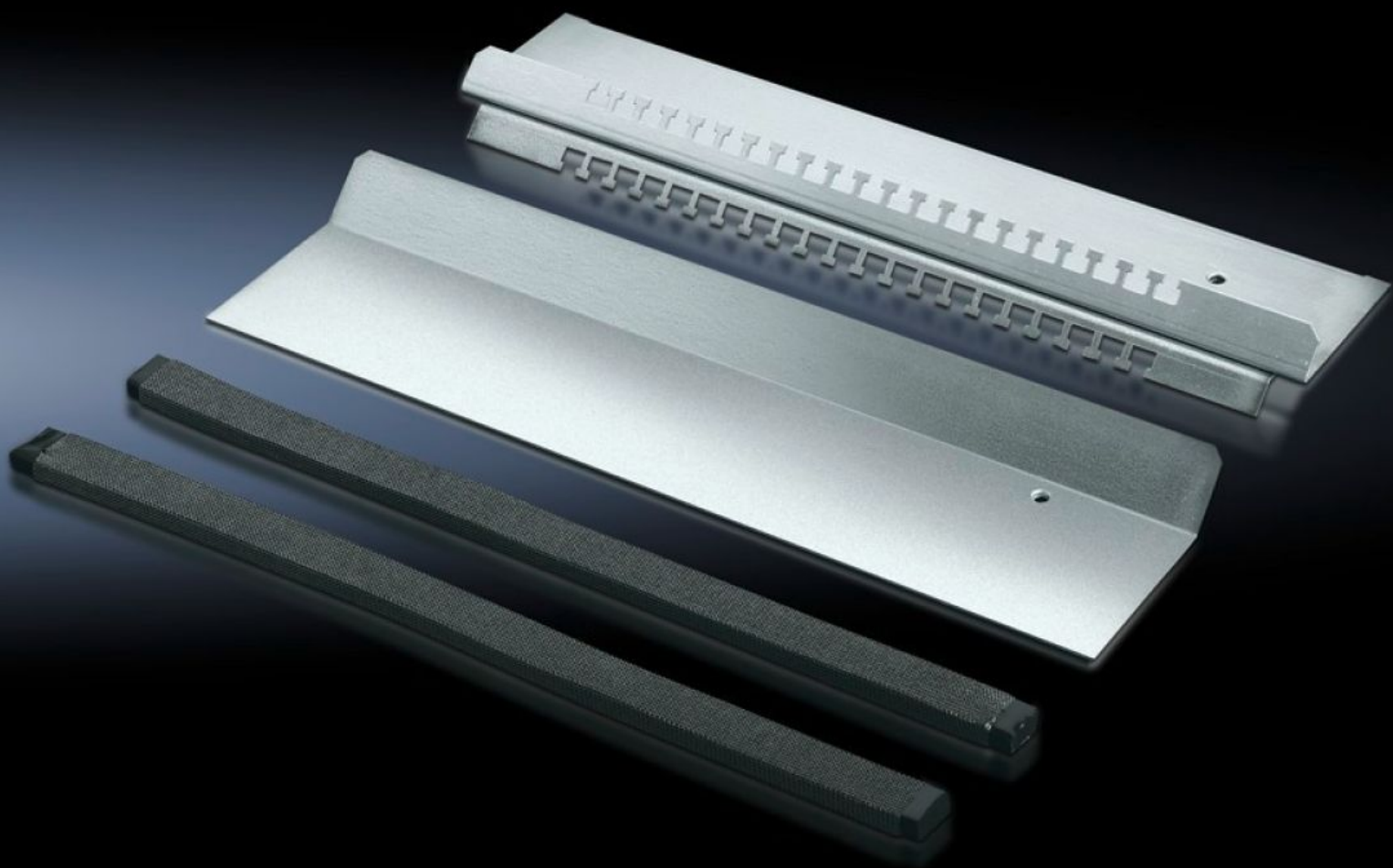


# Rittal – The System.

Faster – better – everywhere.



## TS 8800.620 EMC gland plate

State: 06/09/2025 (Source: [rittal.com/uae-en](http://rittal.com/uae-en))

ENCLOSURES

POWER DISTRIBUTION

CLIMATE CONTROL

IT INFRASTRUCTURE

SOFTWARE & SERVICES

FRIEDHELM LOH GROUP



# TS 8800.620 - EMC gland plate

For shielded cables with a maximum diameter of 20 mm in conjunction with standard gland plates.

## Features

Model No.	TS 8800.620
Product description	For shielded cables with a maximum diameter of 20 mm. Combined EMC contacting and cable fastening provide low-resistance contact between the cable shield and gland plate. For all 400, 500, 600 and 800 mm deep enclosures in conjunction with standard gland plates.
Material	Sheet steel
Surface finish	Zinc-plated
Supply includes	Cable clamp strip with hammer-head punching 1 sliding gland plate 2 EMC seals
Note on Model No.	For one enclosure half only
To fit	Enclosure type: TS Width: = 1,200 mm
Note	Standard-compliant IP protection category not supported
Packs of	1 pc(s).
Net weight	1.825
Gross weight	2.025
Customs tariff number	94039910
EAN	4028177214910
ETIM 9	EC002620
ECLASS 8.0	27189261