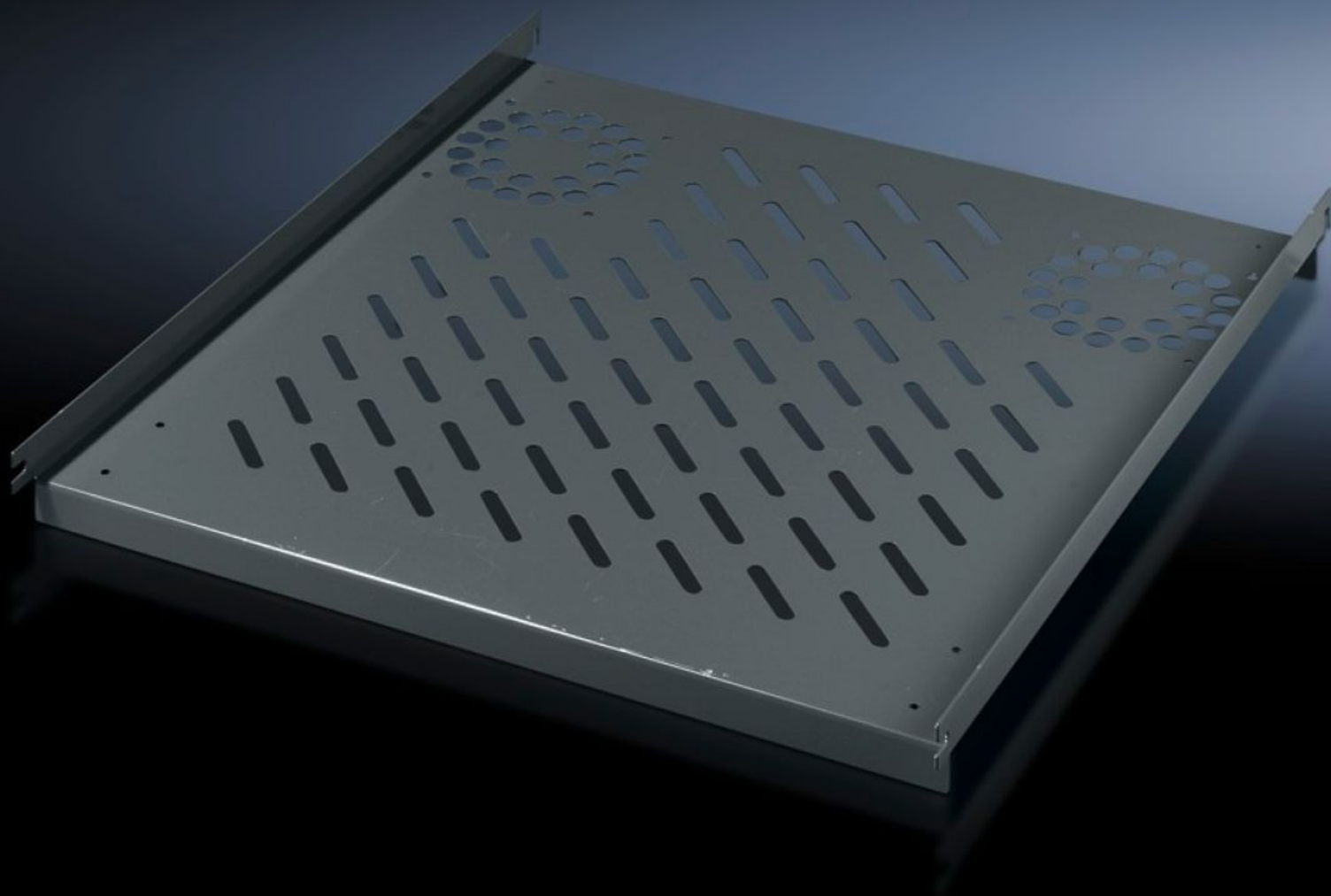
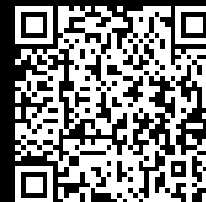


Rittal – The System.

Faster – better – everywhere.



PC 8800.900

Component shelf, static installation

State: 15/08/2025 (Source: rittal.com/uae-en)

ENCLOSURES

POWER DISTRIBUTION

CLIMATE CONTROL

IT INFRASTRUCTURE

SOFTWARE & SERVICES

FRIEDHELM LOH GROUP



PC 8800.900 - Component shelf, static installation for TS, VX SE, PC, IW, prepared for fan expansion kit

For direct mounting on the vertical enclosure section. Simply locate into 4 pre-fitted screws and secure.

Features

| | |
|-------------------------------|--|
| Model No. | PC 8800.900 |
| Product description | Simply locate into 4 pre-fitted screws and secure. |
| Material | Sheet steel |
| Colour | RAL 7015 |
| Supply includes | Assembly parts |
| Installation options | On the vertical TS, VX SE enclosure section |
| Load capacity | 40 kg surface load, static |
| Note | For enclosures without mounting plate |
| Support area | Width: 507 mm Depth: 550 mm |
| To fit | Enclosure type: TS VX SE PC IW Width: = 600 mm Depth: = 600 mm |
| Packs of | 1 pc(s). |
| Net weight | 3.396 |
| Gross weight | 3.52 |
| PCF per pack (cradle-to-gate) | 17.5 kg CO2 eq (Cat B) |
| Note on PCF category | Category B: PCF value (cradle-to-gate) based on the product weight, approximately calculated and self-declared |
| Customs tariff number | 94039910 |

Features

| | |
|------------|---------------|
| EAN | 4028177263086 |
| ETIM 9 | EC002620 |
| ECLASS 8.0 | 27189261 |