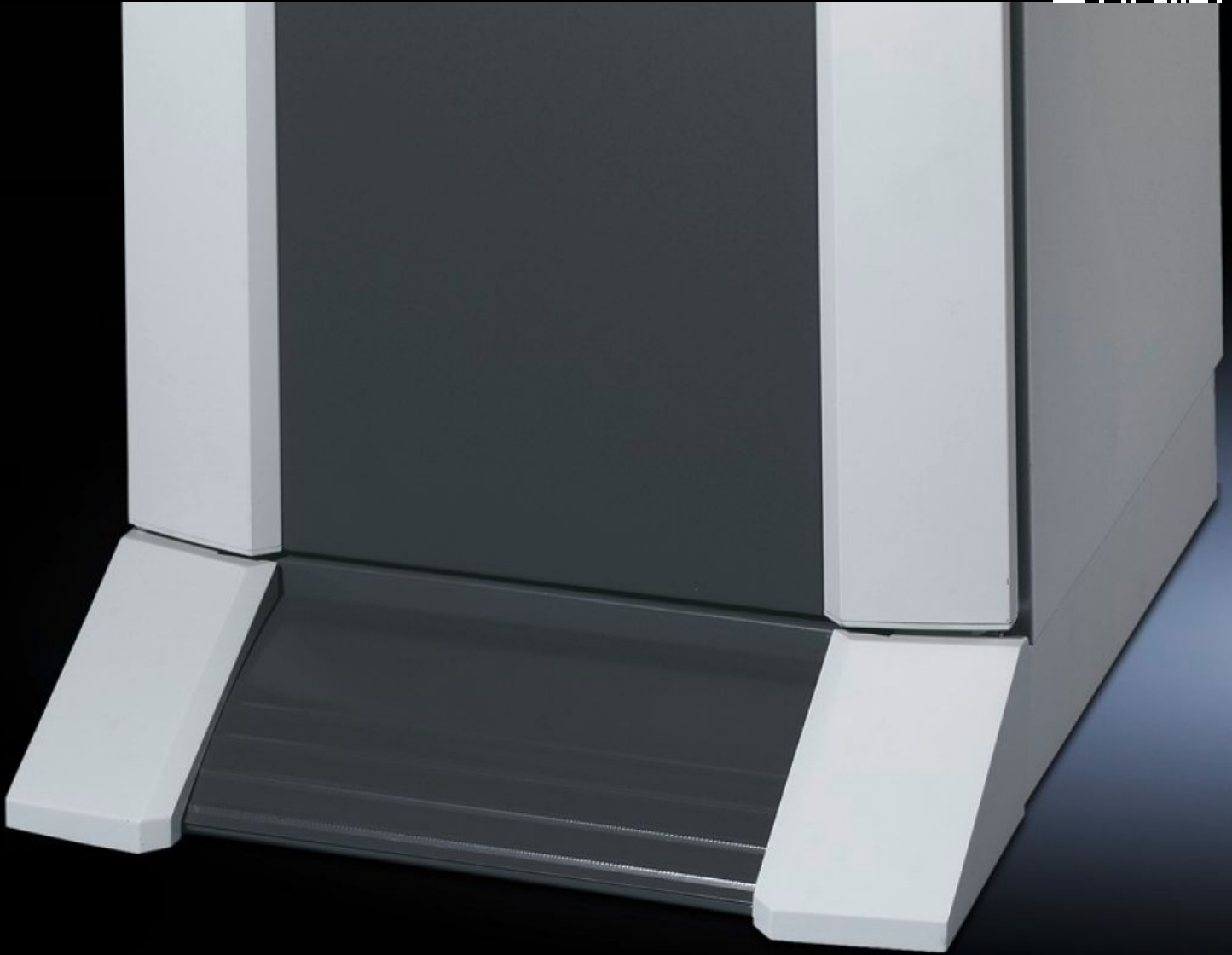


# Rittal – The System.

Faster – better – everywhere.



## PC 8800.920

## Base/plinth, stationary

State: 09/07/2026 (Source: [rittal.com/uae-en](http://rittal.com/uae-en))

ENCLOSURES

POWER DISTRIBUTION

CLIMATE CONTROL

IT INFRASTRUCTURE

SOFTWARE & SERVICES

FRIEDHELM LOH GROUP



# PC 8800.920 - Base/plinth, stationary for PC, IW

Design-coordinated with the enclosures, height 100 mm, with front projection.

## Features

Model No.	PC 8800.920
Product description	Design-coordinated with the enclosures, with front projection.
Material	Sheet steel, 2.0 mm
Colour	RAL 7035 Design component, front: RAL 7015
Supply includes	1 design component, front 1 base/plinth component, rear 2 base/plinth trim panels, side
Dimensions	Height: 100 mm
To fit	Enclosure type: PC IW Width: = 600 mm Depth: = 600 mm
Suitable for depth	600 mm
Packs of	1 pc(s).
Net weight	11.92 kg
Gross weight	13.02 kg
PCF per pack (cradle-to-gate)	49.5 kg CO2 eq (Cat B)
Note on PCF category	Category B: PCF value (cradle-to-gate) based on the product weight, approximately calculated and self-declared
Customs tariff number	94039910
ETIM 9	EC000721
ECLASS 8.0	27182003
Product description	PC Base/plinth, stationary, for PC, IW, for D: 600 mm, H: 100 mm, Sheet steel