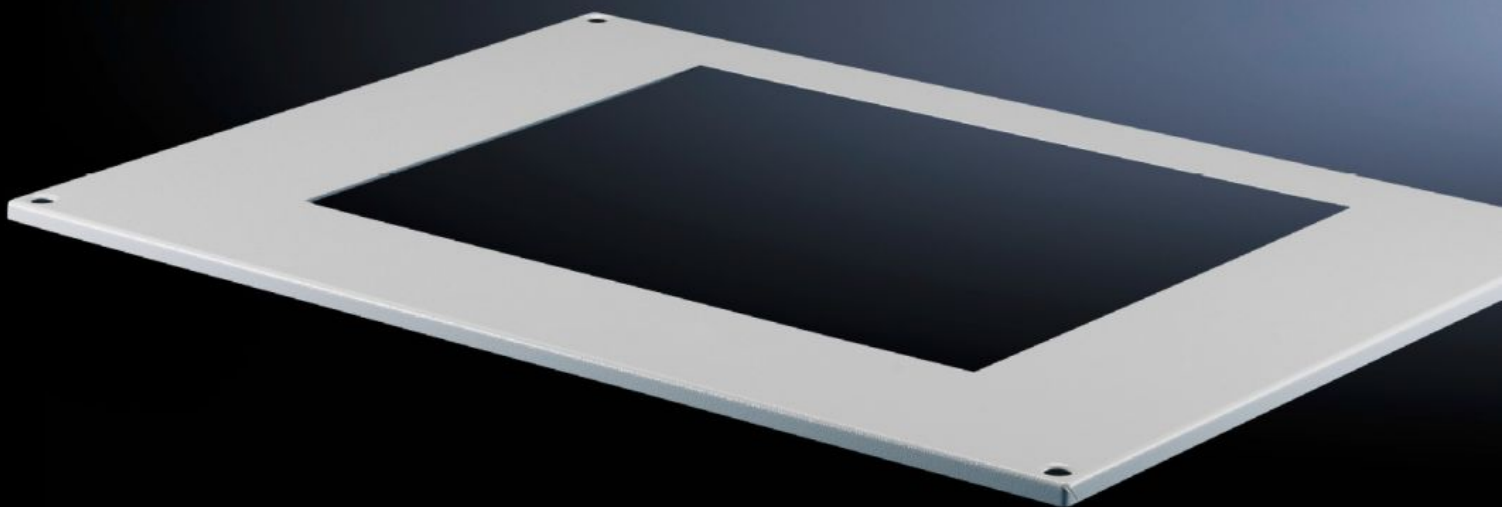
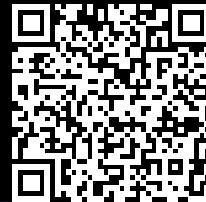


Rittal – The System.

Faster – better – everywhere.



TS 8801.320

Roof plates TS

State: 23/06/2025 (Source: rittal.com/uae-en)

ENCLOSURES

POWER DISTRIBUTION

CLIMATE CONTROL

IT INFRASTRUCTURE

SOFTWARE & SERVICES

FRIEDHELM LOH GROUP



TS 8801.320 - Roof plates TS

Features

Model No.	TS 8801.320
Product description	For mounting roof-mounted units, roof-mounted air/water heat exchangers. The cut-outs in the roof plate are arranged so that the roof-mounted cooling units are positioned centrally on the enclosure.
Benefits	Simple, fast assembly
Material	Sheet steel
Colour	RAL 7035
Supply includes	Assembly parts
Mounting cut-out	Width:475 mm Depth:260 mm
Distance cut-out to back	129.3 mm
Note	When mounting cooling units on the roof plate 8801.310, there may be a collision with the enclosure eyebolts. For this reason, roof fastening screws are supplied loose with the roof plates. Attached to the roof plate 8801.340 from the inside using metal brackets and retaining clamps.
To fit Model No.	3382.... 3359....
Dimensions	Width: 767.5 mm Height: 13 mm Depth: 567.5 mm
To fit	Enclosure type: TS Width: = 800 mm Depth: = 600 mm
Packs of	1 pc(s).
Net weight	5.964
Gross weight	6.278

Features

Customs tariff number	73269098
EAN	4028177360617
ETIM 9	EC000744
ECLASS 8.0	27182405

Approvals

Certificates	EAC
--------------	-----