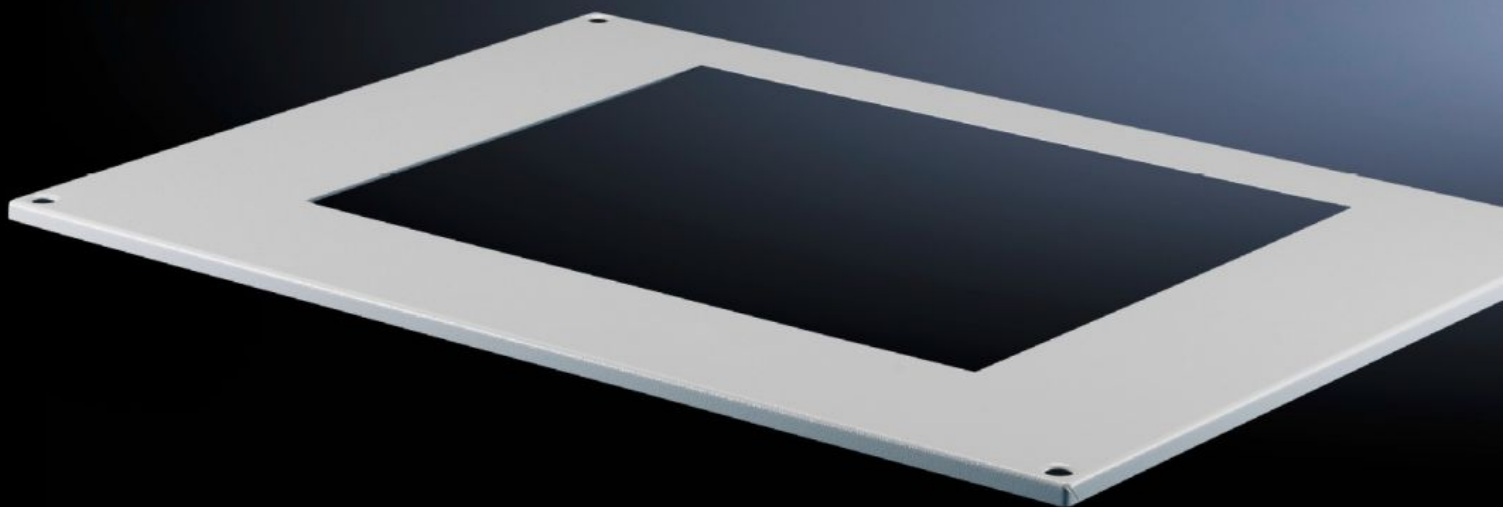
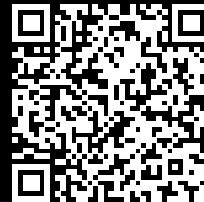


Rittal – The System.

Faster – better – everywhere.



TS 8801.340

Roof plates TS

State: 16/05/2024 (Source: [rittal.com/uae-en](https://www.rittal.com/uae-en))

ENCLOSURES

POWER DISTRIBUTION

CLIMATE CONTROL

IT INFRASTRUCTURE

SOFTWARE & SERVICES

FRIEDHELM LOH GROUP



TS 8801.340 - Roof plates TS

Features

| | |
|--------------------------|---|
| Model No. | TS 8801.340 |
| Product description | For mounting roof-mounted units, roof-mounted air/water heat exchangers. The cut-outs in the roof plate are arranged so that the roof-mounted cooling units are positioned centrally on the enclosure. |
| Benefits | Simple, fast assembly |
| Material | Sheet steel |
| Colour | RAL 7035 |
| Supply includes | Assembly parts |
| Mounting cut-out | Width:692 mm Depth:392 mm |
| Distance cut-out to back | 57.8 mm |
| Note | When mounting cooling units on the roof plate 8801.310, there may be a collision with the enclosure eyebolts. For this reason, roof fastening screws are supplied loose with the roof plates. Attached to the roof plate 8801.340 from the inside using metal brackets and retaining clamps. |
| To fit Model No. | 3386.... 3387.... |
| Dimensions | Width: 767.5 mm Height: 13 mm Depth: 567.5 mm |
| To fit | Enclosure type: TS Width: = 800 mm Depth: = 600 mm |
| Packs of | 1 pc(s). |
| Weight/pack | 4.5 kg |
| Customs tariff number | 94039910 |

Features

| | |
|------------|---------------|
| EAN | 4028177360631 |
| ETIM 7.0 | EC000744 |
| ECLASS 8.0 | 27182405 |

Approvals

| | |
|--------------|-----|
| Certificates | EAC |
|--------------|-----|