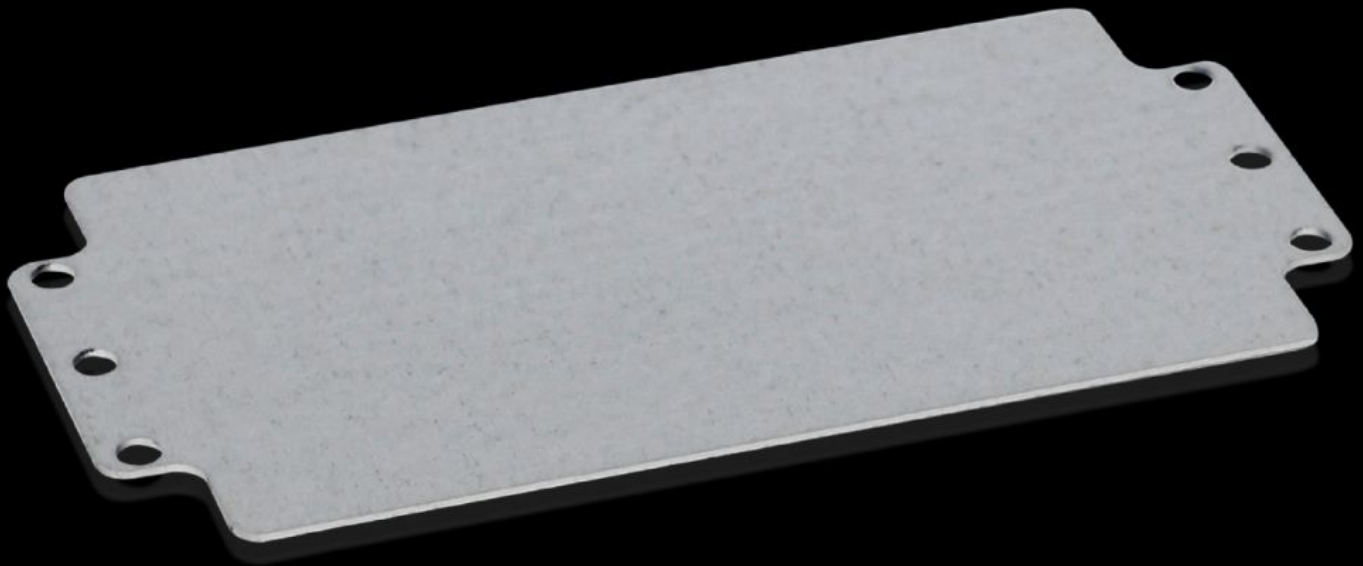


# Rittal – The System.

Faster – better – everywhere.



## GA 9110.700 Mounting plate

State: 04/04/2026 (Source: [rittal.com/uae-en](http://rittal.com/uae-en))

ENCLOSURES

POWER DISTRIBUTION

CLIMATE CONTROL

IT INFRASTRUCTURE

SOFTWARE & SERVICES

FRIEDHELM LOH GROUP



# GA 9110.700 - Mounting plate for GA

For individual interior installation, with mounting holes.



## Features

|                                   |                                                                                                                |
|-----------------------------------|----------------------------------------------------------------------------------------------------------------|
| Model No.                         | GA 9110.700                                                                                                    |
| Product description               | For universal interior installation, with mounting holes.                                                      |
| Material                          | Sheet steel                                                                                                    |
| Surface finish                    | Zinc-plated                                                                                                    |
| Dimensions mounting plate (W x H) | 207 mm x 107 mm                                                                                                |
| To fit                            | Enclosure type: GA<br>Width: = 220 mm<br>Height: = 120 mm                                                      |
| Packs of                          | 2 pc(s).                                                                                                       |
| Net weight                        | 0.45 kg                                                                                                        |
| Gross weight                      | 0.499 kg                                                                                                       |
| PCF per pack (cradle-to-gate)     | 1.7 kg CO2 eq (Cat B)                                                                                          |
| Note on PCF category              | Category B: PCF value (cradle-to-gate) based on the product weight, approximately calculated and self-declared |
| Customs tariff number             | 94039910                                                                                                       |
| ETIM 9                            | EC000213                                                                                                       |
| ECLASS 8.0                        | 27409216                                                                                                       |
| Product description               | GA Mounting plate, WH: 207x107 mm                                                                              |