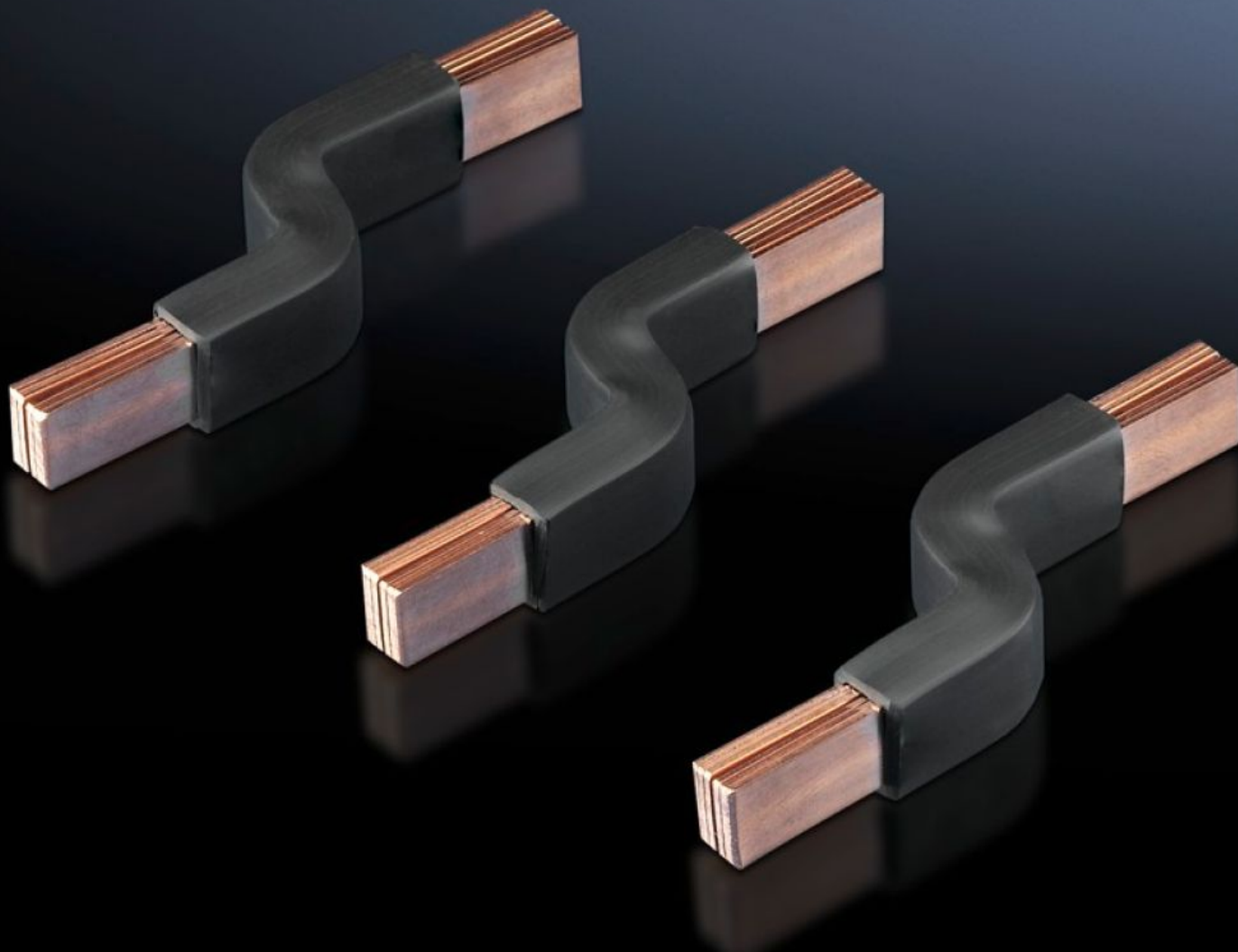
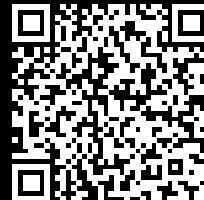


Rittal – The System.

Faster – better – everywhere.



SV 9342.570 Connection bracket

State: 17/08/2025 (Source: rittal.com/uae-en)

ENCLOSURES

POWER DISTRIBUTION

CLIMATE CONTROL

IT INFRASTRUCTURE

SOFTWARE & SERVICES

FRIEDHELM LOH GROUP



SV 9342.570 - Connection bracket for circuit-breaker component adaptors

Pre-assembled, laminated flat copper for connecting standard, commercially available circuit-breakers.



Features

Model No.	SV 9342.570
Product description	Pre-assembled, laminated flat copper for connecting standard, commercially available moulded case circuit-breakers (MCCB).
Material	Electrolytic copper F20
Note	Universal application for switchgear with a dimensional difference between the mounting level and the upper edge of the contact level of 20 ± 5 mm.
To fit Model No.	9342.500 9342.510 9342.540 9342.550
Version – laminated flat copper	Number of lamina: 6 Membrane width: 9 mm Membrane thickness: 0.8 mm
To fit manufacturer (model)	ABB (T1, T1 UL, T2, T2 UL) Eaton (NZM1, NZM1 UL, BZM B1) Schneider Electric (NSC100, NSE75, NSE100)
Packs of	3 pc(s).
Net weight	0.096

Features

Gross weight	0.103
Copper weight (kg per piece)	0.03
Customs tariff number	73182900
EAN	4028177551947
ETIM 9	EC002270
ECLASS 8.0	27409221

Approvals

Explanations	Declaration of conformity Declaration of conformity UK
--------------	---