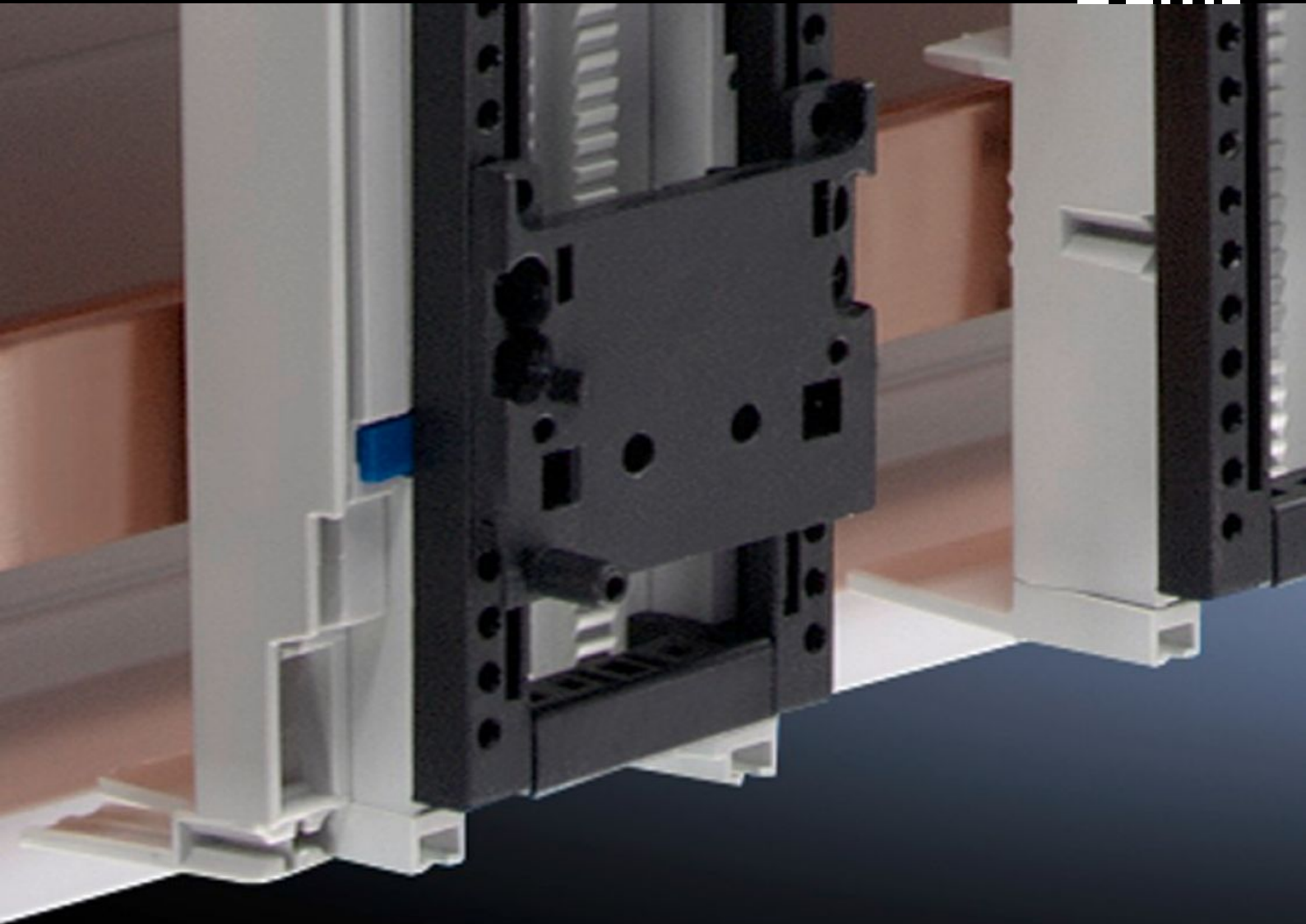


# Rittal – The System.

Faster – better – everywhere.



## SV 9342.810 PinBlock

State: 13/05/2026 (Source: [rittal.com/uae-en](http://rittal.com/uae-en))

ENCLOSURES

POWER DISTRIBUTION

CLIMATE CONTROL

IT INFRASTRUCTURE

SOFTWARE & SERVICES

FRIEDHELM LOH GROUP



# SV 9342.810 - PinBlock for support frames

For reliable attachment and positioning of the contactor on motor starter combinations.



## Features

|                       |   |
|-----------------------|---|
| Model No.             | SV 9342.810   |
| Product description   | For reliable attachment and positioning of the contactor on motor starter combinations. Simple clip-on mounting onto the support frame. Individual vertical positioning is achieved by relocating the PinBlock. |
| Material              | Polyamide   |
| Colour                | RAL 9005  |
| Support frame width   | 55 mm   |
| Note                  | UL approval in conjunction with OM adaptor/support  |
| Packs of              | 5 pc(s).  |
| Net weight            | 0.03 kg   |
| Gross weight          | 0.039 kg  |
| Customs tariff number | 39269097  |
| ETIM 9                | EC002270  |
| ECLASS 8.0            | 27400613  |
| Product description   | SV PinBlock, for OM adaptor, for support frame W: 55 mm   |