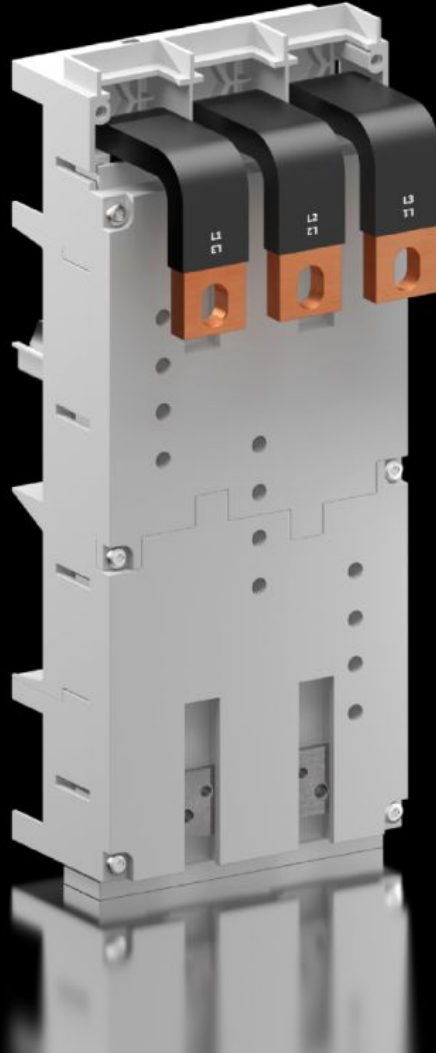
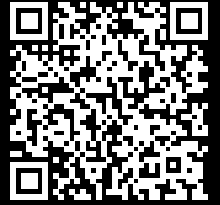


Rittal – The System.

Faster – better – everywhere.



SV 9345.710

Circuit-breaker component adaptor

State: 14/05/2026 (Source: rittal.com/uae-en)

ENCLOSURES

POWER DISTRIBUTION

CLIMATE CONTROL

IT INFRASTRUCTURE

SOFTWARE & SERVICES

FRIEDHELM LOH GROUP



SV 9345.710 - Circuit-breaker component adaptor 3-pole

Circuit-breaker adaptor for universal, simplified assembly of circuit-breakers.



Features

Model No.	SV 9345.710
Material	Polyamide Fire protection corresponding to UL 94-V0
Colour	RAL 7035
Supply includes	Connection straps Sliding blocks
Rated current max.	630 A
Rated operating voltage	690 V, 3~
Electrical ratings UL (SCCR)	65 kA - 480 V, circuit breaker max. 600 A, DIVQ/7
Cable outlet	Bottom
For bar systems with centre-to-centre spacing	60 mm
Note	Cable outlet: Switch outlet or as outgoing cable from the switchgear The technical data may vary for UL applications
Number of poles	3-pole
Note on Model No.	When using the Siemens VL630 switchgear, insert strip 9342.720 is additionally required
Dimensions	Width: 140 mm Height: 345 mm
To fit busbars	Height: 5, 10 mm

Features

To fit manufacturer (model)	ABB (S5, T5, T5 UL) Allen Bradley (140U-L) Eaton (NZM3, NZM3 UL/630 A) GE (FG630) Legrand (DPX 630) Mitsubishi (NF630-SEW/HEW/REW) OEZ (BH630N, BH630S) Schneider Electric (NS(X)630, NSJ600) Schrack (MC3) Siemens (VL630, 3VA24, 3VT3, 3V10 73, 3RV13 73, 3RV13 74, 3VA64) Terasaki (E630, S630)
Approvals	UL
Packs of	1 pc(s).
Net weight	3.65 kg
Gross weight	3.8 kg
Copper weight (kg per piece)	2.44
Customs tariff number	85369095
ETIM 9	EC001531
ECLASS 8.0	27370304
Product description	SV Circuit-breaker component adaptor, 630 A, 690 V, 3-pole, cable outlet bottom, with connection straps

Approvals

Approvals	ABS DNV Lloyds Register UL + C-UL (listed)
Explanations	Declaration of conformity Declaration of conformity UK