

Rittal – The System.

Faster – better – everywhere.



RX 9360.241

RiLineX connection adaptor

State: 21/05/2026 (Source: rittal.com/uae-en)

ENCLOSURES

POWER DISTRIBUTION

CLIMATE CONTROL

IT INFRASTRUCTURE

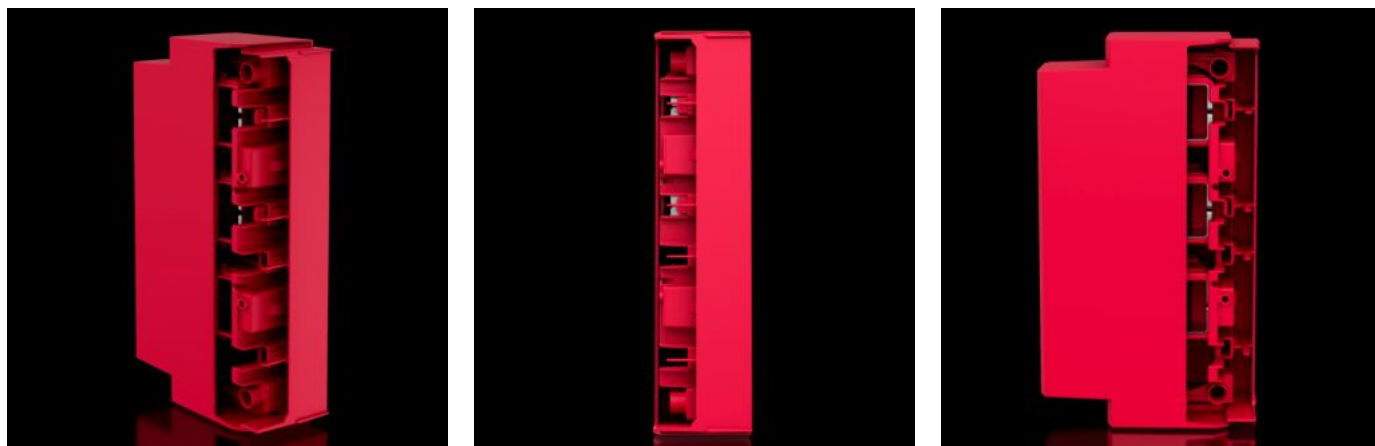
SOFTWARE & SERVICES

FRIEDHELM LOH GROUP



RX 9360.241 - RiLineX connection adaptor

RiLineX connection adaptor for side infeed from the left or right. For use with vertical mounting of the board or as a corner connector using laminated connection straps. It is also ideal as a T-connection between horizontal and vertical systems. It must not be used with other busbar systems such as RiLine60.



Features

| | |
|--|---|
| Model No. | RX 9360.241 |
| Benefits | Mounting on the busbar system and cable connection with just one screw Vertical variant for side infeed to the board |
| Material | Polyamide (PA 6) Fire protection corresponding to UL 94 |
| Colour | RAL 35745 |
| Rated current (max.) | 432 A |
| Rated current max. | 710 A |
| Rated current of round conductor | 710 A |
| Rated current of round conductor (UL) | 630 A |
| Rated current of laminated copper bar | 950 A |
| Rated current of laminated copper bar (UL) | 910 A |

Features

| | |
|--|---|
| Electrical ratings UL (SCCR) | 27,5 kA - 600 V, RMS, unprotected 100 kA - 480 V, circuit breaker max. 800 A, DIVQ/7 100 kA - 600 V, Fuse Class L max. 1200 A, JDDZ/7 |
| Cable outlet | In an axial direction to the board |
| For bar systems with centre-to-centre spacing | 60 mm |
| Number of poles | 3-pole |
| To fit busbar system | RiLineX RiLine60 |
| Dimensions | Width: 57.8 mm Height: 239.4 mm Depth: 135.6 mm |
| Connection of round conductors | 150 - 300 mm ² |
| Clamping area for laminated copper bars (W x H) | 32 x 20 mm |
| To fit busbars | 15 x 5/10 20 x 5/10 30 x 5/10 |
| Rated voltage | 1,000 V AC 1,500 V DC 600 V AC (UL) 600 V DC (UL) |
| Overvoltage category | 4 |
| Contamination level | 3 |
| Standards | IEC/EN 61439-1 UL 508 |
| Rated impulse withstand voltage U _{imp} | 12 kV |
| Rated insulation voltage U _i | 1,000 V |
| Heat loss max. | 50 W |
| IP protection category to IEC 60529 | IP 2XB |

Features

| | |
|-----------------------------------|--|
| Maximum operating air humidity | 90 % |
| Operating temperature range | -5 °C...55 °C |
| Storage temperature range | -25 °C...75 °C |
| Ambient humidity (non-condensing) | 10...90 % |
| Packs of | 1 pc(s). |
| Net weight | 1 kg |
| Gross weight | 1.185 kg |
| Customs tariff number | 85369010 |
| ETIM 9 | EC001531 |
| Product description | RiLineX connection adaptor for side infeed from the left or right. For use with vertical mounting of the board or as a corner connector using laminated connection straps. It is also ideal as a T-connection between horizontal and vertical systems. It must not be used with other busbar systems such as RiLine60. |

Approvals

| | |
|--------------|--|
| Approvals | UL + C-UL (listed) |
| Explanations | Declaration of conformity PCF-declaration |

Tender text

RiLineX connection adaptor (710 A)

RiLineX connection adaptor for 60 mm busbar systems. The device has screw fastening for simultaneous contact between the rail and conductor. For voltages up to 1000 V AC and 1500 V DC.

IEC and UL approved.

Product information

Number of poles: 3

Busbar dimensions: 15/20/30 mm x 5/10 mm

Rated current max.: 710 A

Connection: max. 300 mm²

Cable outlet: horizontal/vertikal

Dimensions: 60 mm x 240 mm x 130 mm (WxHxD)

Manufacturer: Rittal GmbH & Co. KG

Type: 9360241