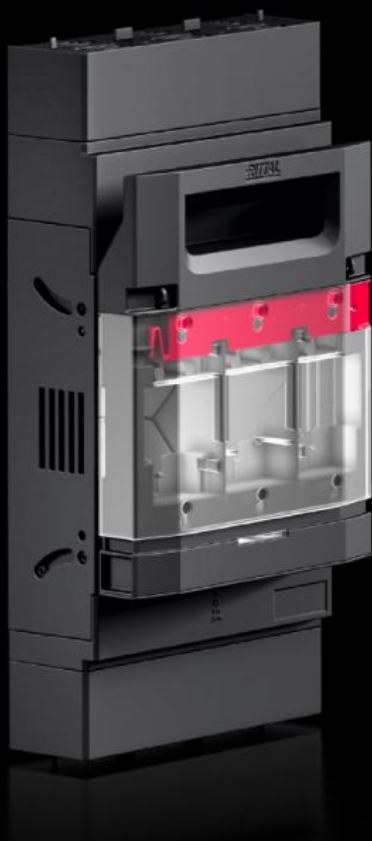


Rittal – The System.

Faster – better – everywhere.



RX 9362.215

RiLineX NH fuse-switch disconnecter

State: 10/09/2025 (Source: rittal.com/uae-en)

ENCLOSURES

POWER DISTRIBUTION

CLIMATE CONTROL

IT INFRASTRUCTURE

SOFTWARE & SERVICES

FRIEDHELM LOH GROUP



RX 9362.215 - RiLineX NH fuse-switch disconnecter

RiLineX NH fuse-switch disconnecter in size 2 for 60 mm busbar systems. The cover can be locked and prepared for a lead seal. It also has visual fuse monitoring. Integrated measuring points on the cover ensure safe voltage testing. NH fuse-switch disconnecters have a park position to make maintenance easier. Size M10 screw terminal connection. Cable outlet can be at the top or bottom, as required. Includes electronic fuse monitoring.

Features

Model No.	RX 9362.215
Benefits	Cover: can be locked and prepared for a lead seal Voltage test through separate opening Snap-on mounting up to 250 A and simple adjustment to busbar thickness 5/10 mm Tool-free changeover of the cable outlet Park position for simpler maintenance work All variants also available with electronic fuse monitoring
Material	Polyamide (PA 6) Fire protection corresponding to UL 94 Contact tracks: Electrolytic copper, silver-plated
Colour	RAL 9005 RAL 35745
Supply includes	Connectors for electronic fuse monitoring
For bar systems with centre-to-centre spacing	60 mm
Cable outlet	Top/bottom
Type of electrical connection	Screw M10
Rated operating current max.	400 A
Rated operating voltage	690 V AC
For NH size	2
Test specification	IEC/DIN EN 60 947-3 DIN EN 60 269-2 (fuse inserts)

Features

Dimensions	Width: 209 mm Height: 349 mm Depth: 135 mm
Operating temperature range	-5 °C...35 °C
Storage temperature range	-25 °C...70 °C
To fit busbars	15 x 5/10 20 x 5/10 30 x 5/10
To fit busbar system	RiLineX RiLine60
Number of poles	3-pole
Contamination level	3
IP protection category to IEC 60529	IP 2XB
Power dissipation (max.)	98 W
Packs of	1 pc(s).
Net weight	4.2
Gross weight	4.268
Copper weight (kg per piece)	1.75
Customs tariff number	85369095
ETIM 9	EC001040

Approvals

Explanations	Declaration of conformity
--------------	---------------------------