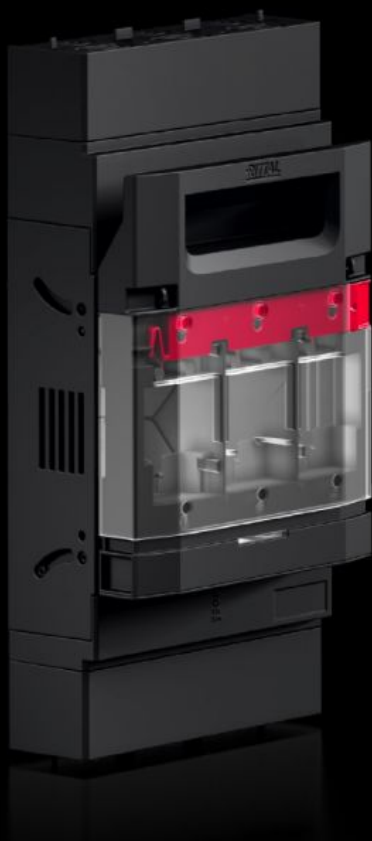


# Rittal – The System.

Faster – better – everywhere.



## RX 9363.215

## RiLineX Fuse-switch disconnecter

State: 19/07/2025 (Source: [rittal.com/uae-en](https://www.rittal.com/uae-en))

ENCLOSURES

POWER DISTRIBUTION

CLIMATE CONTROL

IT INFRASTRUCTURE

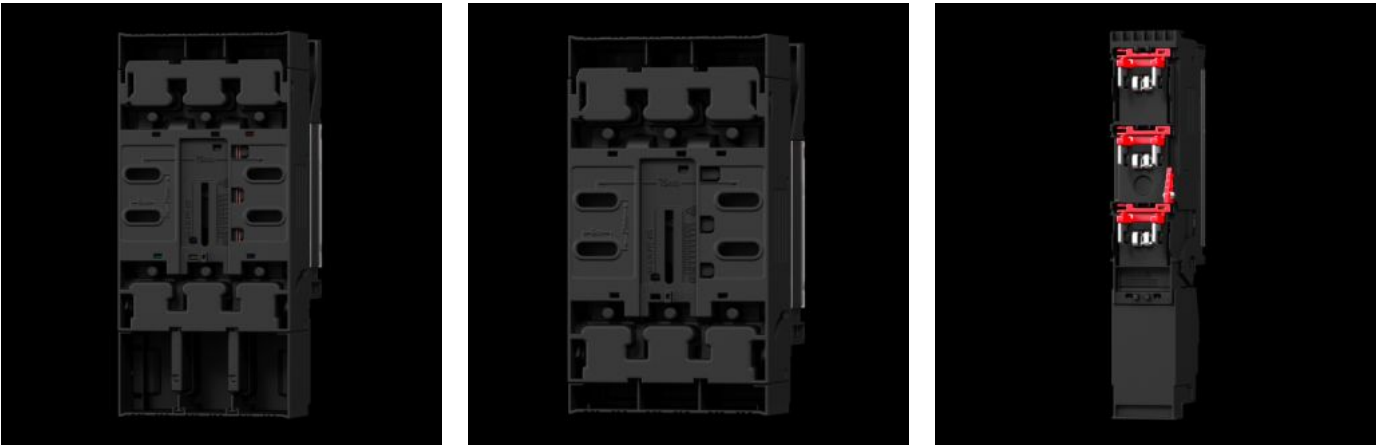
SOFTWARE & SERVICES

FRIEDHELM LOH GROUP



# RX 9363.215 - RiLineX Fuse-switch disconnecter

RiLineX NH fuse-switch disconnecter in size 2 for mounting plates. The cover can be locked and prepared for a lead seal. It also has visual fuse monitoring. Integrated measuring points on the cover ensure safe voltage testing. NH fuse-switch disconnecters have a park position to make maintenance easier. Size M10 screw terminal connection. Includes electronic fuse monitoring.



## Features

|                             |   |
|-----------------------------|---|
| Model No.                   | RX 9363.215   |
| Design                      | For mounting plate assembly   |
| Benefits                    | Cover: can be locked and prepared for a lead seal<br>Voltage test through separate opening<br>Tool-free changeover of the cable outlet<br>Park position for simpler maintenance work<br>High rated voltage 800 V ready<br>All variants also available with electronic fuse monitoring |
| Material                    | Polyamide (PA 6)<br>Fire protection corresponding to UL 94<br>Contact tracks: Electrolytic copper, silver-plated  |
| Colour                      | RAL 9005<br>RAL 35745   |
| Supply includes             | Connectors for electronic fuse monitoring   |
| for mounting plate assembly | Yes   |
| Cable outlet                | Top/bottom  |

# Features

|                                      |   |
|--------------------------------------|---|
| Type of electrical connection        | Screw M10   |
| Rated insulation voltage             | 1,000 kV  |
| Rated operating current max.         | 400 A   |
| Rated operating voltage              | 690 V AC  |
| For NH size                          | 2   |
| Test specification                   | IEC/DIN EN 60 947-3<br>DIN EN 60 269-2 (fuse inserts) |
| Dimensions                           | Width: 209 mm<br>Height: 349 mm<br>Depth: 129 mm      |
| Operating temperature range          | -5 °C...35 °C   |
| Storage temperature range            | -25 °C...70 °C  |
| Number of poles                      | 3-pole  |
| Contamination level                  | 3   |
| with electronic fuse monitoring      | Yes   |
| IP protection category to IEC 60 529 | IP 2XB  |
| Power dissipation (max.)             | 71 W  |
| Packs of                             | 1 pc(s).  |
| Net weight                           | 3.7   |
| Gross weight                         | 3.746   |
| Copper weight (kg per piece)         | 1.32  |
| Customs tariff number                | 85369095  |
| ETIM 9                               | EC001040  |

## Approvals

|              |                           |
|--------------|---------------------------|
| Explanations | Declaration of conformity |
|--------------|---------------------------|