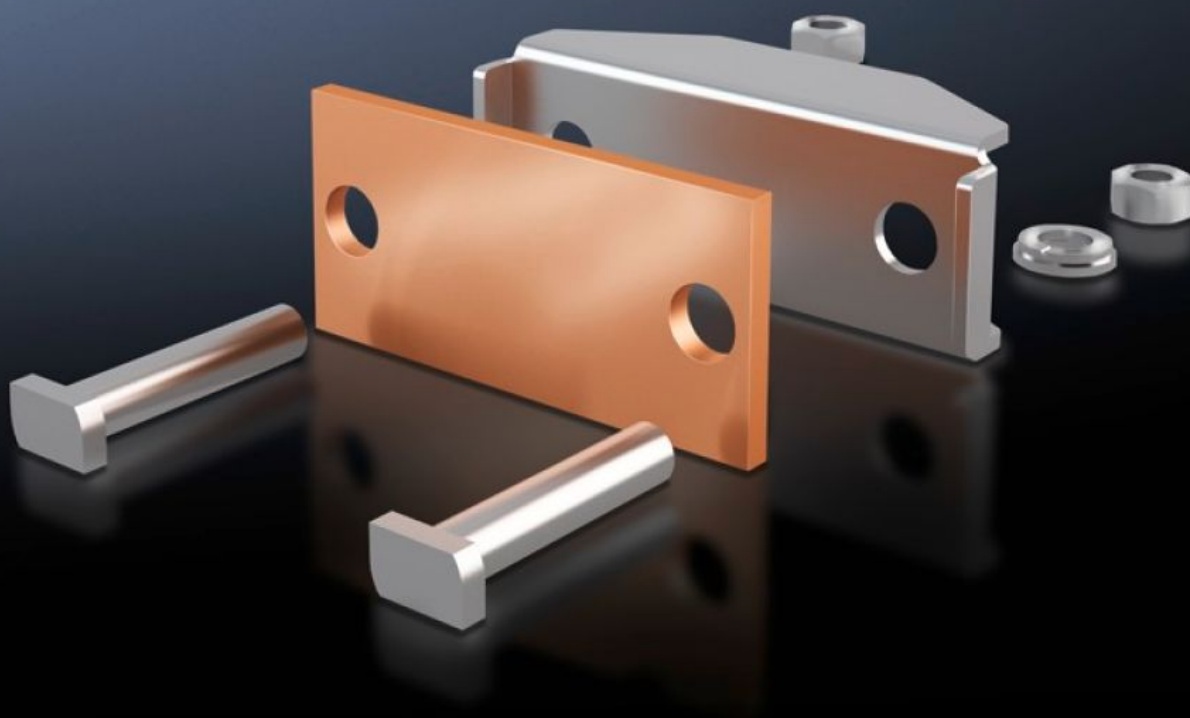


# Rittal – The System.

Faster – better – everywhere.



## SV 9650.330 Connection plate

State: 14/08/2025 (Source: [rittal.com/uae-en](https://www.rittal.com/uae-en))

ENCLOSURES

POWER DISTRIBUTION

CLIMATE CONTROL

IT INFRASTRUCTURE

SOFTWARE & SERVICES

FRIEDHELM LOH GROUP



# SV 9650.330 - Connection plate for laminated copper bars

For the connection of laminated flat copper bars.

## Features

|   |   |
|---|---|
| Model No.                                       | SV 9650.330   |
| Product description                             | For the connection of laminated flat copper bars.       |
| Material  | Connection plate: E-Cu<br>Thrust piece: Stainless steel |
| Supply includes                                 | Assembly parts  |
| To fit busbars                                  | Maxi-PLS 60   |
| Clamping area for laminated copper bars (W x H) | 32 x 20 mm  |
| Packs of  | 3 pc(s).  |
| Net weight                                      | 1.029   |
| Gross weight                                    | 1.237   |
| Copper weight (kg per piece)                    | 0.13  |
| Customs tariff number                           | 73269098  |
| EAN   | 4028177239517   |
| ETIM 9  | EC002498  |
| ECLASS 8.0                                      | 27379201  |

## Approvals

|              |   |
|--------------|---|
| Approvals    | UL + C-UL (listed)  |
| Explanations | Declaration of conformity<br>Declaration of conformity UK |