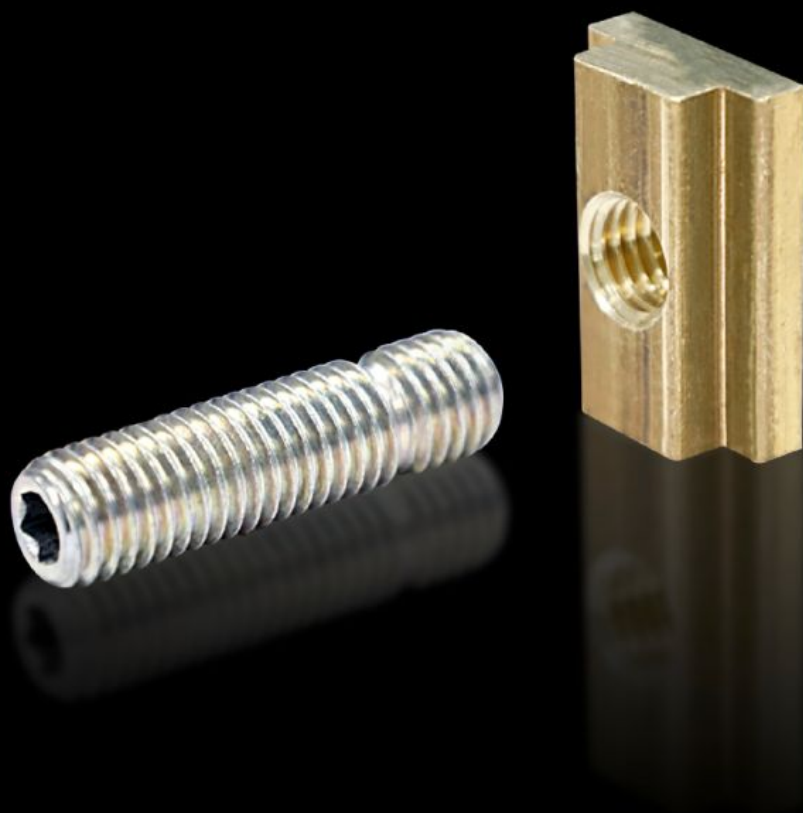
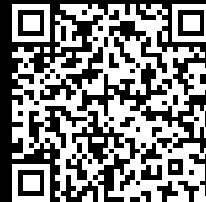


# Rittal – The System.

Faster – better – everywhere.



## SV 9650.370 Terminal studs

State: 05/08/2025 (Source: [rittal.com/uae-en](https://rittal.com/uae-en))

ENCLOSURES

POWER DISTRIBUTION

CLIMATE CONTROL

IT INFRASTRUCTURE

SOFTWARE & SERVICES

FRIEDHELM LOH GROUP



# SV 9650.370 - Terminal studs for Maxi-PLS

For connecting cables with ring terminals

## Features

|                       |  |
|-----------------------|--|
| Model No.             | SV 9650.370  |
| Product description   | For connecting cables with ring terminals.                       |
| Material              | Terminal stud: Steel, zinc-plated<br>Sliding block: Copper alloy |
| Supply includes       | Terminal studs<br>Sliding blocks<br>Assembly parts               |
| To fit busbars        | Maxi-PLS 60  |
| Dimensions            | Thread: M12<br>Thread length: 32 mm                              |
| Packs of              | 3 pc(s).   |
| Net weight            | 0.3  |
| Gross weight          | 0.347  |
| Customs tariff number | 73181535   |
| EAN                   | 4028177239548  |
| ETIM 9                | EC002498   |
| ECLASS 8.0            | 27379201   |

## Approvals

|           |                    |
|-----------|--------------------|
| Approvals | UL + C-UL (listed) |
|-----------|--------------------|