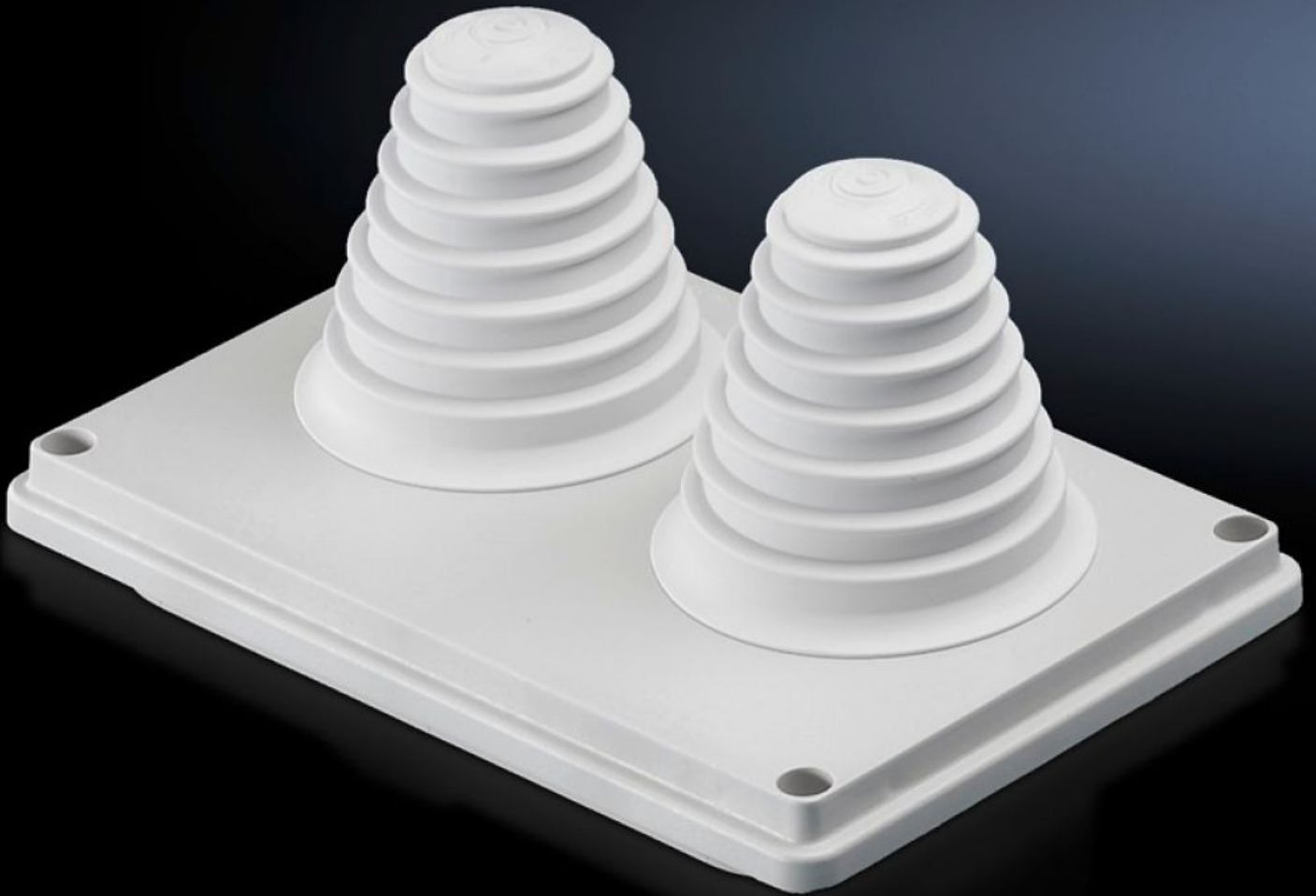


**Rittal – The System.**

Faster – better – everywhere.



# SV 9665.780

## Cable entry gland

State: 06/04/2026 (Source: [rittal.com/uae-en](http://rittal.com/uae-en))

ENCLOSURES

POWER DISTRIBUTION

CLIMATE CONTROL

IT INFRASTRUCTURE

SOFTWARE & SERVICES

FRIEDHELM LOH GROUP



# SV 9665.780 - Cable entry gland for roof plate

Cable entry glands for roof plates, with metric knockouts, sealing membranes, entry glands, or sealed.



## Features

Model No.	SV 9665.780
Design	with entry fittings up to Ø 66 mm
Product description	For simple, secure cable entry in the roof zone.
Material	Insulating material
Colour	RAL 7035
Supply includes	Seal included
Dimensions	Width: 250 mm Depth: 160 mm
IP protection category to IEC 60529	IP 55
Packs of	1 pc(s).
Net weight	0.38 kg
Gross weight	0.39 kg
Customs tariff number	39269097
ETIM 9	EC000211
ECLASS 8.0	27142421
Product description	SV Cable entry gland, with entry glands up to Ø 66 mm, insulating material