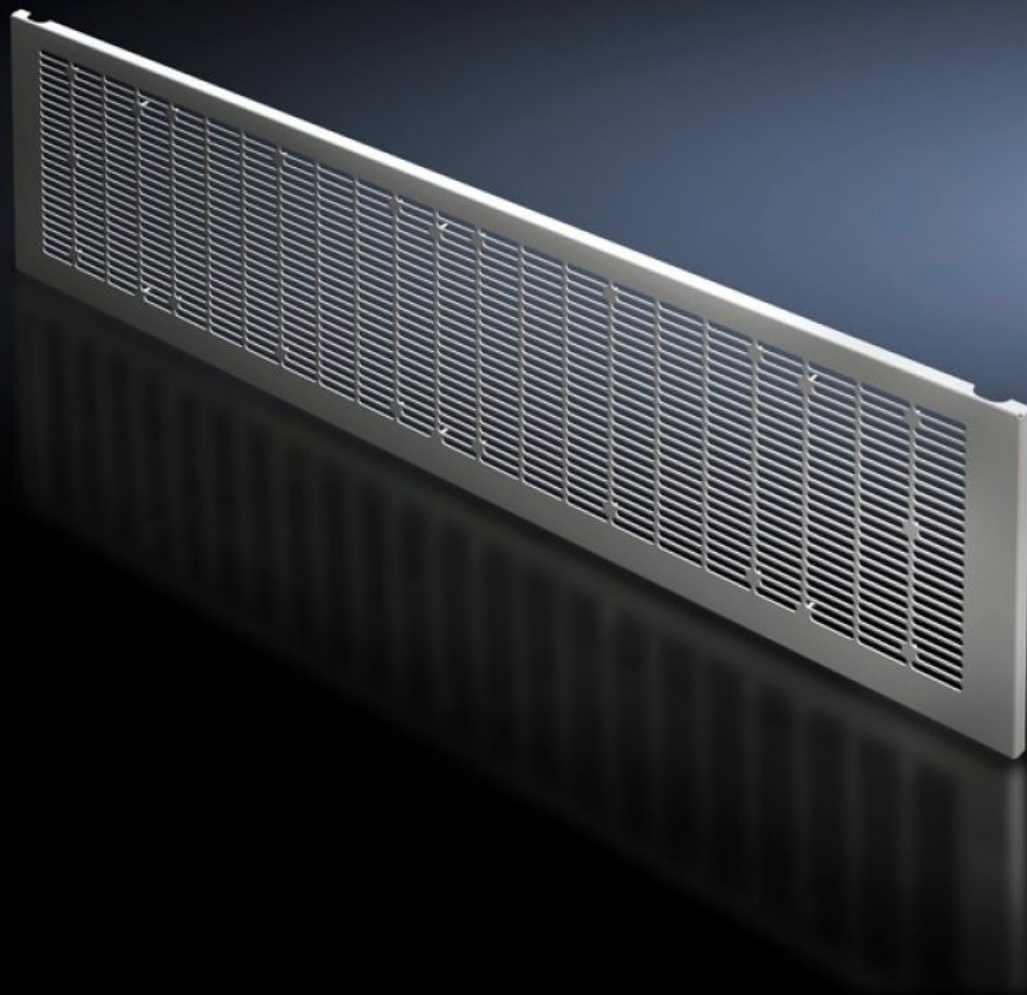


# Rittal – The System.

Faster – better – everywhere.



## VX 9682.356

## Front trim panel, bottom, vented

State: 24/08/2025 (Source: [rittal.com/uae-en](https://rittal.com/uae-en))

ENCLOSURES

POWER DISTRIBUTION

CLIMATE CONTROL

IT INFRASTRUCTURE

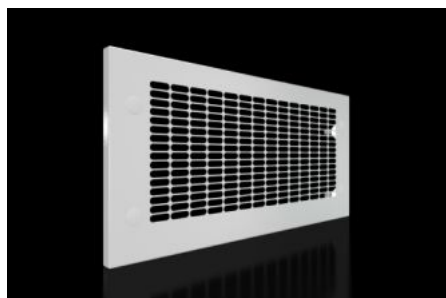
SOFTWARE & SERVICES

FRIEDHELM LOH GROUP



# VX 9682.356 - Front trim panel, bottom, vented for VX

To finish off at the bottom when using partial doors.



## Features

Model No.	VX 9682.356
Design	with vents
Product description	To finish off the modular front design at the bottom when using partial doors. The front trim panels may be removed from the outside by unscrewing.
Material	Sheet steel, 1.5 mm
Surface finish	Textured paint
Colour	RAL 7035
Supply includes	Front trim panel Cross member Assembly parts
Note	When using front trim panels IP 2X, select a roof plate with protection category IP 2X for the top ventilation.
Dimensions	Height: 300 mm
To fit	Width: = 600 mm
Packs of	1 pc(s).
Net weight	2.58
Gross weight	2.98
PCF per pack (cradle-to-gate)	11.4 kg CO2 eq (Cat B)

# Features

Note on PCF category	Category B: PCF value (cradle-to-gate) based on the product weight, approximately calculated and self-declared
Customs tariff number	83024200
EAN	4028177929814
ETIM 9	EC000456
ECLASS 8.0	27142423

# Approvals

Approvals	UL + C-UL (listed) UL + C-UL - FTTA
Explanations	Declaration of conformity Declaration of conformity UK