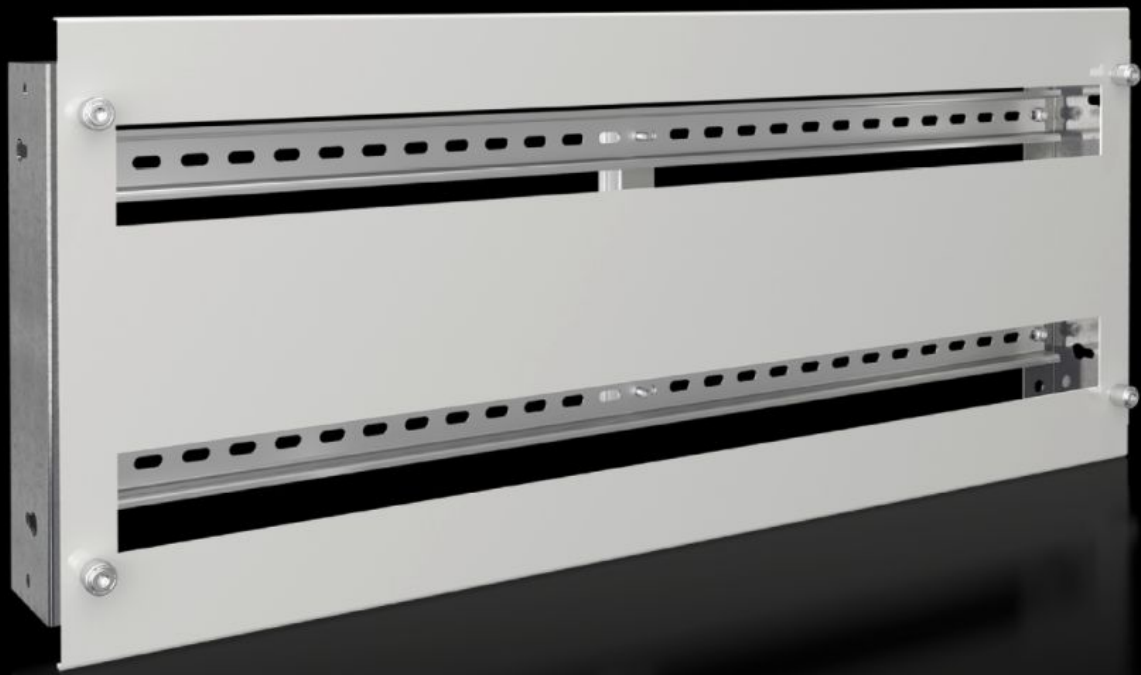


Rittal – The System.

Faster – better – everywhere.



SV 9683.783 Support frame

State: 05/04/2026 (Source: rittal.com/uae-en)

ENCLOSURES

POWER DISTRIBUTION

CLIMATE CONTROL

IT INFRASTRUCTURE

SOFTWARE & SERVICES

FRIEDHELM LOH GROUP



SV 9683.783 - Support frame for DIN rail-mounted devices

Support frame set for accepting DIN rail-mounted devices (e.g. MCBs).

Features

| | |
|-------------------------------|--|
| Model No. | SV 9683.783 |
| Product description | Support frame set for accepting DIN rail-mounted devices (e.g. MCBs). The support rails are fastened with two mounting brackets to the compartment side panel. The cover is fastened to the support frame with knurled screws. In combination with functional space dividers, partial mounting plates and side panel modules, internal compartmentalisation in accordance with Form 2, 3 or 4 is possible. |
| Material | Support frame: Sheet steel, zinc-plated, passivated, 1.5 mm Cover: Sheet steel, spray finished, 1.5 mm |
| Supply includes | Support rails 2 mounting brackets 1 cover with cut-out Assembly parts |
| For compartment height | 300 mm |
| To fit | Width: = 800 mm |
| No. of pitch units 17.5 mm | 2 x 36 |
| Packs of | 1 pc(s). |
| Net weight | 4 kg |
| Gross weight | 4.3 kg |
| PCF per pack (cradle-to-gate) | 16.4 kg CO2 eq (Cat B) |
| Note on PCF category | Category B: PCF value (cradle-to-gate) based on the product weight, approximately calculated and self-declared |
| Customs tariff number | 39269097 |
| ETIM 9 | EC002270 |
| ECLASS 8.0 | 27400613 |

Features

Product description

SV Support frame, for DIN rail-mounted devices, 2 x 24 pitch units,
WH: 700x295 mm, for VX (W: 800 mm)

Approvals

Explanations

Declaration of conformity UK