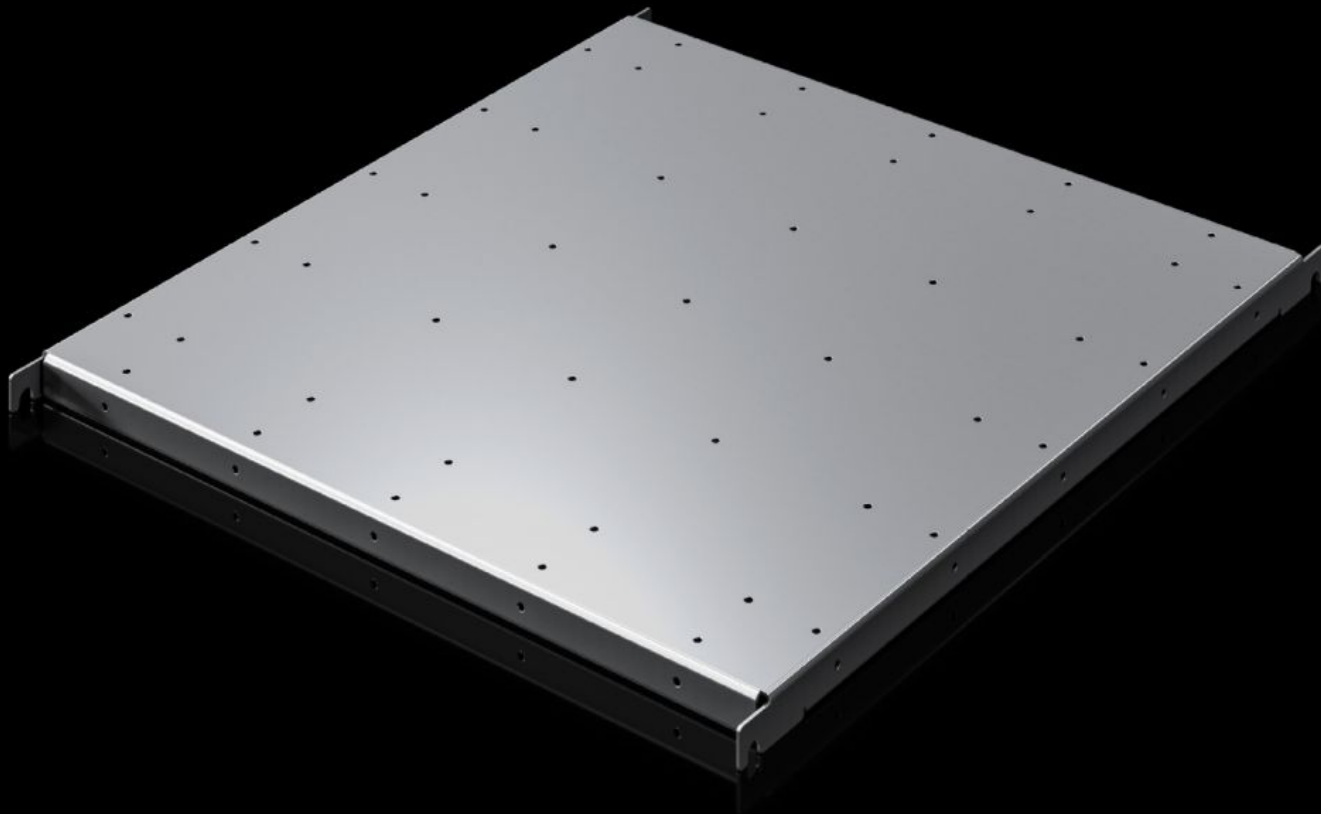


# Rittal – The System.

Faster – better – everywhere.



## SV 9692.023

## Component shelf, heavy duty

State: 27/08/2025 (Source: [rittal.com/uae-en](https://www.rittal.com/uae-en))

ENCLOSURES

POWER DISTRIBUTION

CLIMATE CONTROL

IT INFRASTRUCTURE

SOFTWARE & SERVICES

FRIEDHELM LOH GROUP



# SV 9692.023 - Component shelf, heavy duty VX ESS

To attach e.g. monobloc batteries.

## Features

Model No.	SV 9692.023
Material	Sheet steel, zinc-plated
Supply includes	Assembly parts
Load capacity static	200 kg 2,000 N
Support area	Width: 709 mm Depth: 714 mm
To fit	Width: 800 mm Depth: 800 mm
Packs of	1 pc(s).
Net weight	12
Gross weight	12.14
PCF per pack (cradle-to-gate)	30.78 kg CO2 eq (Cat B)
Note on PCF category	Category B: PCF value (cradle-to-gate) based on the product weight, approximately calculated and self-declared
Customs tariff number	94039910
EAN	4028177046016