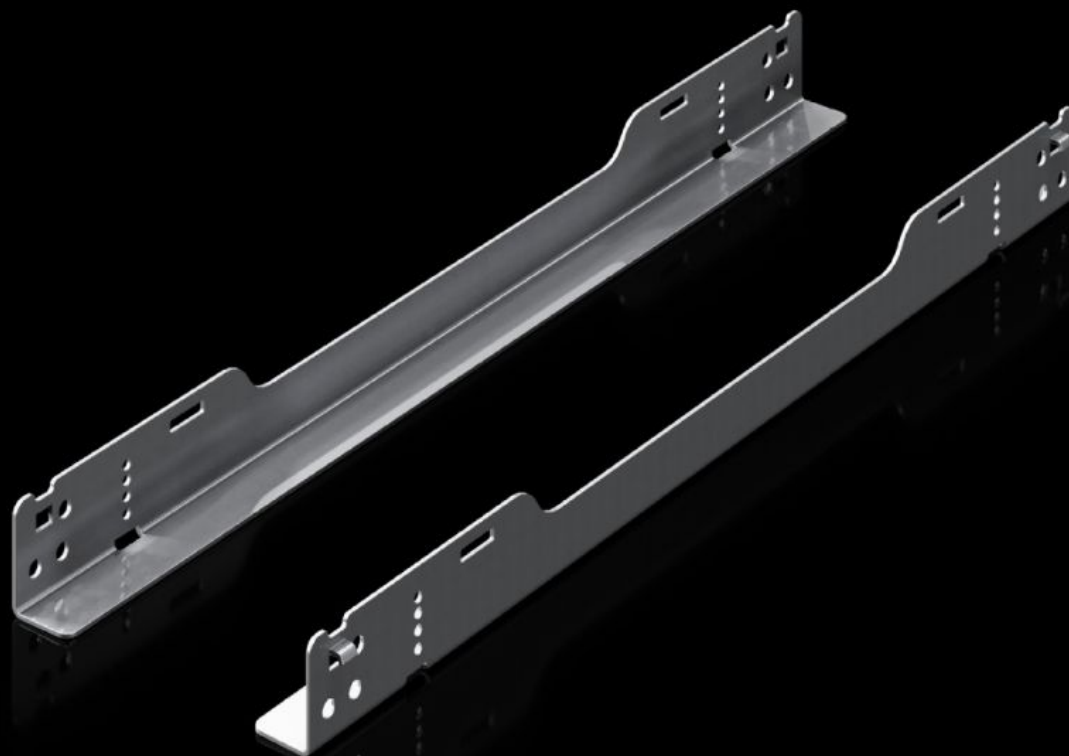


# Rittal – The System.

Faster – better – everywhere.



## SV 9692.051 Slide rail

State: 21/06/2026 (Source: [rittal.com/uae-en](http://rittal.com/uae-en))

ENCLOSURES

POWER DISTRIBUTION

CLIMATE CONTROL

IT INFRASTRUCTURE

SOFTWARE & SERVICES

FRIEDHELM LOH GROUP



# SV 9692.051 - Slide rail VX ESS

To accommodate rack-mounted batteries.

## Features

Model No.	SV 9692.051
Material	Sheet steel, 2 mm, zinc-plated
Supply includes	Perforated strip Assembly parts
Length	513.9 mm
Load capacity (static)	120 kg 1,200 N
To fit	Enclosure type: VX CS Toptec Depth: 800 mm
Packs of	10 pc(s).
Net weight	5.3 kg
Gross weight	5.347 kg
PCF per pack (cradle-to-gate)	13.31 kg CO2 eq (Cat B)
Note on PCF category	Category B: PCF value (cradle-to-gate) based on the product weight, approximately calculated and self-declared
Customs tariff number	73269098
ETIM 9	EC002620
Product description	VX ESS slide rail L: 513.9 mm, for enclosure D: 800 mm