

Rittal – The System.

Faster – better – everywhere.



HD 1315.600

Compact enclosure HD, single-door

State: 8/07/2026 (Source: rittal.com/uk-en)

ENCLOSURES

POWER DISTRIBUTION

CLIMATE CONTROL

IT INFRASTRUCTURE

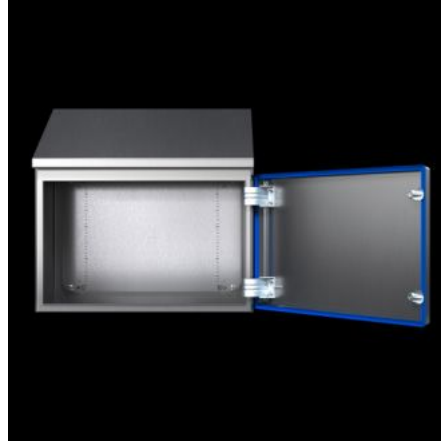
SOFTWARE & SERVICES

FRIEDHELM LOH GROUP



HD 1315.600 - Compact enclosure HD, single-door

Enclosure solution tailored to the requirements of the food and beverage industry. Roof angled forwards by 30°. Seal dyed blue to clearly distinguish it from foodstuffs



Features

Model No.	HD 1315.600
Design	Hygienic Design enclosure
Product modification	From June 2020, the compact enclosure HD, single-door, comes with the new compact enclosure AX mounting plate.
Material	Enclosure and door: Stainless steel 1.4301 (AISI 304) Mounting plate: Sheet steel Lock insert HD: Stainless steel 1.4404 (AISI 316L) Seal: Silicone, compliant with FDA Guideline 21 CFR 177.2600
Surface finish	Enclosure and door: Brushed, grain 400, peak-to-valley height < 0.8 µm Mounting plate: Zinc-plated Seal: Blue, dyed (RAL 5010)
Supply includes	Enclosure of all-round solid construction Door with inserted seal Door hinged on the right, may be swapped to the left Mounting plate
Dimensions	Width: 810 mm Height, front: 650 mm Height rear: 821 mm Depth: 300 mm

Features

Dimensions mounting plate (W x H)	750 mm x 575 mm
Door opening angle	125°
Number of locks	2
IK Code	IK08
Basic material	Stainless steel 1.4301 (AISI 304)
IP protection category to IEC 60529	IP 66 IP X9
Protection category NEMA	NEMA 1 NEMA 3 NEMA 3X NEMA 4 NEMA 4X NEMA 12 NEMA 13
Type rating to UL 50E	Type 1 Type 3 Type 3X Type 4 Type 4X Type 12 Type 13
Packs of	1 pc(s).
Net weight	39 kg
Gross weight	39.5 kg
PCF per pack (cradle-to-gate)	121.98
Customs tariff number	94032080
ETIM 9	EC000261
ETIM 8	EC000261
ECLASS 8.0	27180101
Product description	HD Compact enclosure, WHD: 810x650(H1)x821(H2)x300 mm, Stainless steel 1.4301, with mounting plate, with hinged door and silicone seal

Approvals

Approvals	UL + C-UL (listed)
Explanations	Declaration of conformity Declaration of conformity UK PCF-declaration

Tender text

Hygienic Design Compact enclosure HD, single-door

Housing:

Housing folded and welded from one piece,
closed all around, without additional gaps and dead spaces.

Enclosure including mounting plate.

Sloped roof integrated in the housing
angled forwards by 30 °.

Drip edge integrated in the roof
to protect the upper area of the door seal.

The distance between the drip edge and
the upper edge of the door allows safe cleaning.

Door:

Single-door with all-round 10 ° inclined edges,
Door hinge right, can be swapped to left. Hinges in
hygienic design within the sealing area of the door

One cam lock in hygienic design,
lock insert without depressions and gaps,
for quick and easy cleaning.

Door seal made of silicone,
in accordance with FDA guideline 21 CFR 177.2600
with a gap-free transition between door and enclosure,
free of undercuts and dead spaces.

Material:

Enclosure and door: Stainless steel 1.4301 (AISI 304)

Mounting plate: Sheet steel

Lock insert HD: Stainless steel 1.4404 (AISI 316L)

Seal: Silicone, compliant with FDA Guideline 21 CFR 177.2600

Surface finish:

Enclosure and door: Brushed, grain 400,

peak-to-valley height < 0.8 µm

Mounting plate: Zinc-plated

Seal: Blue, dyed (RAL 5010)

Protection classes and impact resistance:

Protection category IP to IEC 60 529: IP66, IPX9

Protection category to NEMA / Type Rating to UL 50E: 1, 3, 3X, 4, 4X, 1

IK-Code: IK08

Certificates:

UL, cUL

Accessories for a holistic hygienic installation:

HD wall spacers, HD levelling feet,

HD cable glands, HD cam lock

Dimensions enclosure (W x H (front) x H (rear) x D):

810 x 650 x 821 x 300 mm

Dimensions mounting plate (W x H): 750 x 575 mm

Model no.:1315.600

Manufacturer: Rittal GmbH & Co. KG