

# Rittal – The System.

Faster – better – everywhere.



## KX 1528.000

### Terminal box KX, sheet steel, without gland plate

State: 17/08/2025 (Source: [rittal.com/uk-en](http://rittal.com/uk-en))

ENCLOSURES

POWER DISTRIBUTION

CLIMATE CONTROL

IT INFRASTRUCTURE

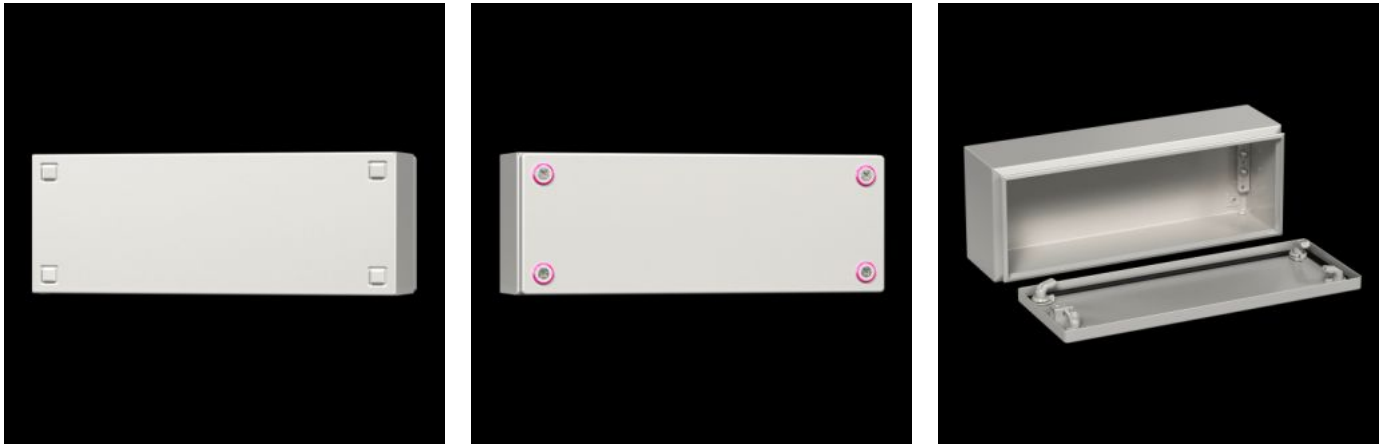
SOFTWARE & SERVICES

FRIEDHELM LOH GROUP



# KX 1528.000 - Terminal box KX, sheet steel, without gland plate

The small enclosure KX, terminal box KX, without a gland plate allows for flexible interior installation while maintaining a high protection category.



## Features

Model No.	KX 1528.000
Product description	The small enclosure KX, terminal box KX, without a gland plate allows for flexible interior installation while maintaining a high protection category.
Material	Enclosure: Sheet steel Cover: Sheet steel, all-round foamed-in PU seal
Surface finish	Enclosure and cover: Dipcoat primed, powder-coated on the outside, textured paint
Colour	RAL 7035
Supply includes	Enclosure with cover Mini cam lock
Protection category NEMA	NEMA 1 NEMA 3R NEMA 4 NEMA 12
Protection category to IEC 60 529	IP 66

# Features

---

Type rating to UL 50E	Type 1 Type 3R Type 4 Type 12
IK Code	IK08
Dimensions	Width: 200 mm Height: 150 mm Depth: 80 mm
Material thickness - cover	1.25 mm
Material thickness - enclosure	1.25 mm
Basic material	Sheet steel
Packs of	1 pc(s).
Net weight	1.35
Gross weight	1.425
PCF per pack (cradle-to-gate)	7 kg CO2 eq (Cat B)
Note on PCF category	Category B: PCF value (cradle-to-gate) based on the product weight, approximately calculated and self-declared
Customs tariff number	84879090
EAN	4028177816343
E-Number Sweden	E3465200
ETIM 9	EC000261
ETIM 8	EC000261
ECLASS 8.0	27180101

# Approvals

---

# Approvals

---

Approvals	Bureau Veritas DNV-GL Lloyds Register of Shipping UL + C-UL (listed)
Certificates	Protection category
Explanations	Manufacturer's declaration Declaration of conformity Declaration of conformity UK PCF-declaration

---

## Tender text

Enclosure (terminal box without gland plate)

Enclosure with cover:

Stable sheet steel design,  
body folded from a single piece and welded,  
with protection channel all-round cover opening,  
rear panel with eyelets for wall mounting bracket,  
cover with foamed-in PU seal,  
with PE conductor connection in the enclosure  
and via U-shaped bracket in the cover,  
for quick and easy earthing,  
with mini cam lock.

QR code:

QR code printed on body, cover and rating plate  
for clear identification and easy retrieval of relevant  
product information and documentation,  
and for clear traceability of the individual parts.

Accessories: Cover hinge, cover retainer, mounting plate,  
top hat rail, wall mounting bracket,  
mounting claw for second mounting level.

Material:

Enclosure, cover: Sheet steel

Surface finish:

Triple surface treatment for optimum protection

against corrosion and resistance to mineral oils,  
lubricants, machining emulsions and solvents:  
Nanoceramic coating, electrophoretic dipcoat priming  
Powder-coated on the outside in textured RAL 7035.  
Protection category to IEC 60 529: IP 66  
Protection category to UL 508A: Type 4  
Dimensions (W x H x D): 200x150x80 mm