

Rittal – The System.

Faster – better – everywhere.



AX 2260.630

AX wall-mounted enclosure, 3-part

State: 19/06/2026 (Source: rittal.com/uk-en)

ENCLOSURES

POWER DISTRIBUTION

CLIMATE CONTROL

IT INFRASTRUCTURE

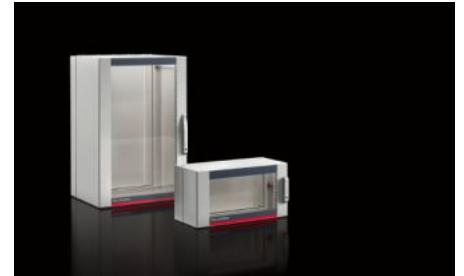
SOFTWARE & SERVICES

FRIEDHELM LOH GROUP



AX 2260.630 - AX wall-mounted enclosure, 3-part

The delivery concept of the three-part AX wall-mounted enclosures reduces complexity and enhances flexibility. The AX/VX modular system makes these enclosures suitable for a range of applications. The three-part structure ensures easy access.



Features

Model No.	AX 2260.630
Design	Wall-mounted enclosures IT
Material	Wall and hinged part: Sheet steel, 1.5 mm Viewing window: Single-pane safety glass, 3 mm
Surface finish	Powder-coated
Colour	Wall and hinged part: RAL 7035 Glazed door: RAL 7035/7015 (slate grey)
Supply includes	Wall section: Gland plate, solid, top and bottom Hinged part with 25 mm pitch pattern of holes in the front and rear frame, and two 482.6 mm (19") mounting angles, front, static installation Designer glazed door Centre part lock: 3 mm double-bit Designer glazed door lock: Security lock 3524 E Mini-comfort handle
Units	6 U
Dimensions	Width: 600 mm Height: 345 mm Depth: 373 mm
Installation depth	320 mm

Features

Clearances	Clearance width: 502 mm Clearance height: 284 mm
Depth hinged part	216 mm
Depth of wall section	135 mm
Number of locks	1
Load capacity of hinged part (static)	300 N
Load capacity of wall section (static)	100 N
Basic material	Sheet steel
Lock	Lock version: Mini-comfort handle Lock insert: Security lock insert no. 3524 E
Protection category to IEC 60 529	IP 54 in conjunction with solid gland plate top and bottom
Packs of	1 pc(s).
Net weight	21.6 kg
Gross weight	22.6 kg
Note on PCF category	Category B: PCF value (cradle-to-gate) based on the product weight, approximately calculated and self-declared
Customs tariff number	94032080
ETIM 9	EC002500
ETIM 8	EC002500
ECLASS 8.0	27180101
Product description	AX wall-mounted enclosure, 3-part, WxHxD: 600x746x573 mm, 6 U, wall section: solid gland plate top and bottom, with mini-comfort handle

Approvals

Approvals	UL + C-UL (listed)
-----------	--------------------

Approvals

Explanations

Declaration of conformity

Tender text

AX wall-mounted enclosure 3-part, 6 U, depth 373 mm

Enclosure: 3-part wall-mounted enclosure consisting of:

Wall section with solid gland plate at the top and bottom, may optionally be exchanged for cable entry variants (accessories), holes for wall-mounting,

Hinged section with 2 pcs. 482,6 mm (19")

mounting angles fitted at the front with all-around 25 mm pitch pattern in the front and rear frame.

Designer glazed door with mini-comfort handle

for lock inserts, with security lock 3524 E,

may optionally be exchanged for mini-comfort handle for semi cylinder (accessory)

Material enclosure: sheet steel 1,5 mm,

Material glazed door: single-pane safety glass, 3 mm

Surface finish: powder-coated

Color wall and hinged part: RAL 7035

Color glazed door: RAL 7035/7015 (slate grey)

Protection category: IP 55 nach EN 60 529

Dimension (W x H x D): 600 x 345 x 373 mm, 6 U

Manufacturer: Rittal GmbH & Co. KG