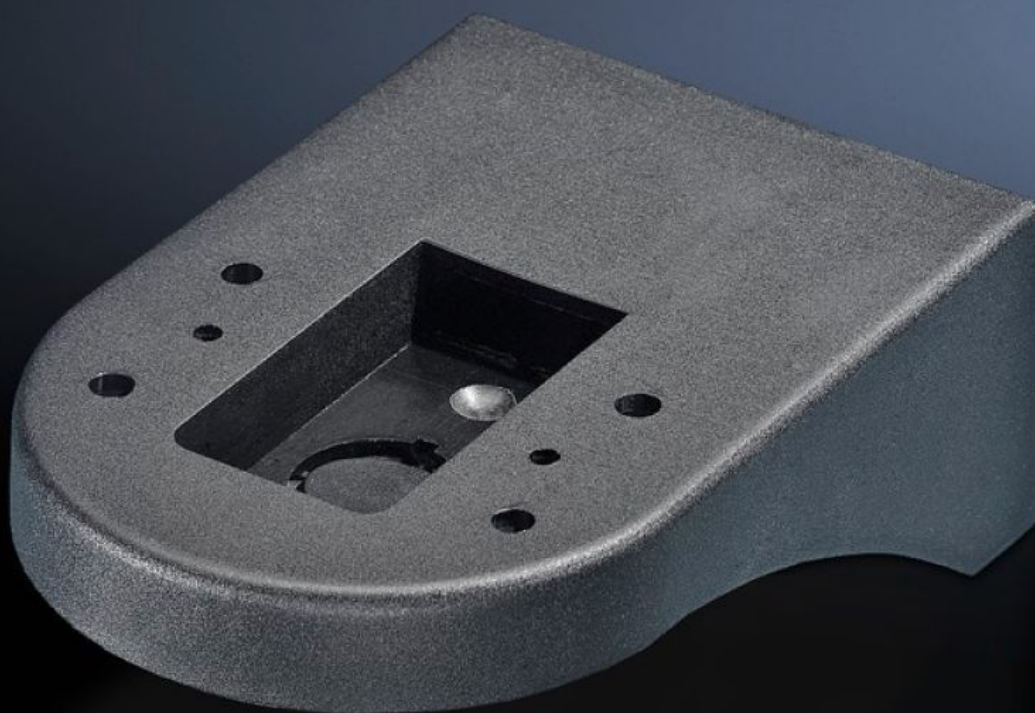


Rittal – The System.

Faster – better – everywhere.



SG 2372.110

Mounting component

State: 14/07/2025 (Source: rittal.com/uk-en)

ENCLOSURES

POWER DISTRIBUTION

CLIMATE CONTROL

IT INFRASTRUCTURE

SOFTWARE & SERVICES

FRIEDHELM LOH GROUP



SG 2372.110 - Mounting component for wall/base mounting

Wall mounting bracket, bracket for connection component, for side cable outlet.



Features

| | |
|-----------------------|---|
| Model No. | SG 2372.110 |
| Design | Bracket for wall mounting, including rubber gland for concealed cable routing |
| Colour | Black |
| Signal pillar | LED compact |
| Packs of | 1 pc(s). |
| Net weight | 0.04 |
| Gross weight | 0.05 |
| Customs tariff number | 73182900 |
| EAN | 4028177444041 |
| ETIM 9 | EC002625 |
| ETIM 8 | EC002625 |
| ECLASS 8.0 | 27189234 |

Approvals

Approvals

UR