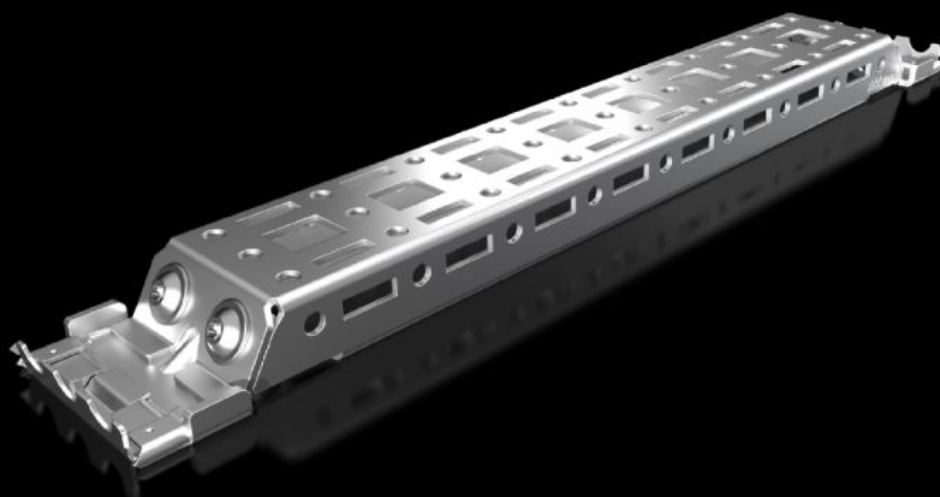


# Rittal – The System.

Faster – better – everywhere.



## AX 2394.250

## Rail for interior installation AX

State: 26/07/2025 (Source: [rittal.com/uk-en](http://rittal.com/uk-en))

ENCLOSURES

POWER DISTRIBUTION

CLIMATE CONTROL

IT INFRASTRUCTURE

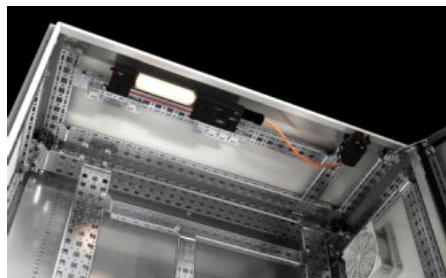
SOFTWARE & SERVICES

FRIEDHELM LOH GROUP



# AX 2394.250 - Rail for interior installation AX

For mounting in the enclosure, no machining required. Suitable for mounting on the sides and roof. Creates additional mounting space e.g. for VX punched section with mounting flange 23 x 64 mm, VX punched section with mounting flange 14 x 39 mm, enclosure lights, door-operated switch, door stay, VX cable clamp rails and support rails.



## Features

|                     |  |
|---------------------|--|
| Model No.           | AX 2394.250  |
| Product description | For mounting in the enclosure, no machining required. Suitable mounting on the side, base and roof using the locators integrated into the enclosure. Variable with 2 rows of system punchings, creates additional mounting space e.g. for: Punched section with mounting flange 14 x 39 mm, enclosure lights, door-operated switch, door stay, cable conduit holder. |
| Benefits            | Modular system for AX<br>Compatibility with VX25 accessories<br>Installation without drilling saves time<br>Enclosure protection category is retained (no machining required)<br>Automatic potential equalisation<br>Enhanced load capacity and stability  |
| Material            | Sheet steel  |
| Surface finish      | Zinc-plated  |
| Supply includes     | Rail for interior installation AX<br>Adaptor<br>Assembly parts   |
| Note                | For installing the LED system light, either VX punched sections with mounting flanges 23 x 64 mm or mounting bracket for interior installation will be required.   |

# Features

|                       |                                       |
|-----------------------|---------------------------------------|
| To fit                | Enclosure type: AX<br>Depth: = 250 mm |
| Packs of              | 4 pc(s).                              |
| Net weight            | 0.92                                  |
| Gross weight          | 1                                     |
| Customs tariff number | 73269098                              |
| EAN                   | 4028177965690                         |
| E-Number Sweden       | E3465444                              |
| ETIM 9                | EC002620                              |
| ETIM 8                | EC002620                              |
| ECLASS 8.0            | 27189234                              |