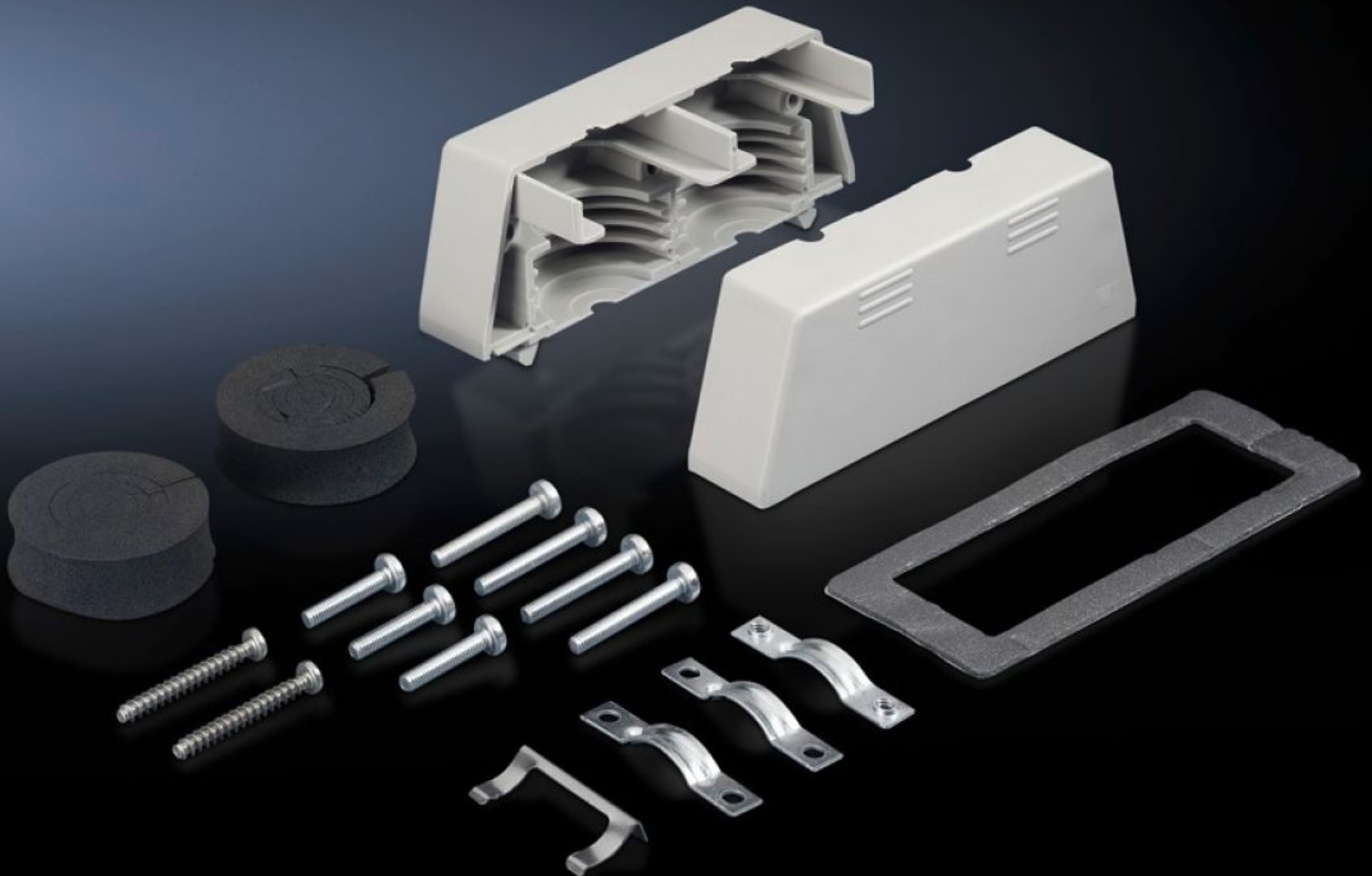


Rittal – The System.

Faster – better – everywhere.



SZ 2400.000 Connector gland

State: 4/04/2026 (Source: rittal.com/uk-en)

ENCLOSURES

POWER DISTRIBUTION

CLIMATE CONTROL

IT INFRASTRUCTURE

SOFTWARE & SERVICES

FRIEDHELM LOH GROUP



SZ 2400.000 - Connector gland for connector cut-outs (24-pole)

For the entry of 2 pre-assembled cables in the connector cut-out, without dismantling the connector.

Features

| | |
|-------------------------------|--|
| Model No. | SZ 2400.000 |
| Product description | For the entry of 2 pre-assembled cables in the connector cut-out, without dismantling the connector. |
| Material | Enclosure: Plastic Clamps: Sheet steel |
| Surface finish | Clamps: Zinc-plated |
| Supply includes | 2 half shells Mounting clamp Assembly parts |
| Dimensions | Width: 142 mm Height: 50 mm Depth: 54 mm |
| For cable diameters | 8 - 36 mm |
| Packs of | 1 pc(s). |
| Net weight | 0.27 kg |
| Gross weight | 0.291 kg |
| PCF per pack (cradle-to-gate) | 1.1 kg CO2 eq (Cat B) |
| Note on PCF category | Category B: PCF value (cradle-to-gate) based on the product weight, approximately calculated and self-declared |
| Customs tariff number | 39269097 |
| ETIM 9 | EC000211 |
| ETIM 8 | EC000211 |
| ECLASS 8.0 | 27142421 |

Features

Product description

SZ Connector gland, for connector pads (24-pole), for cables \varnothing 8-36 mm