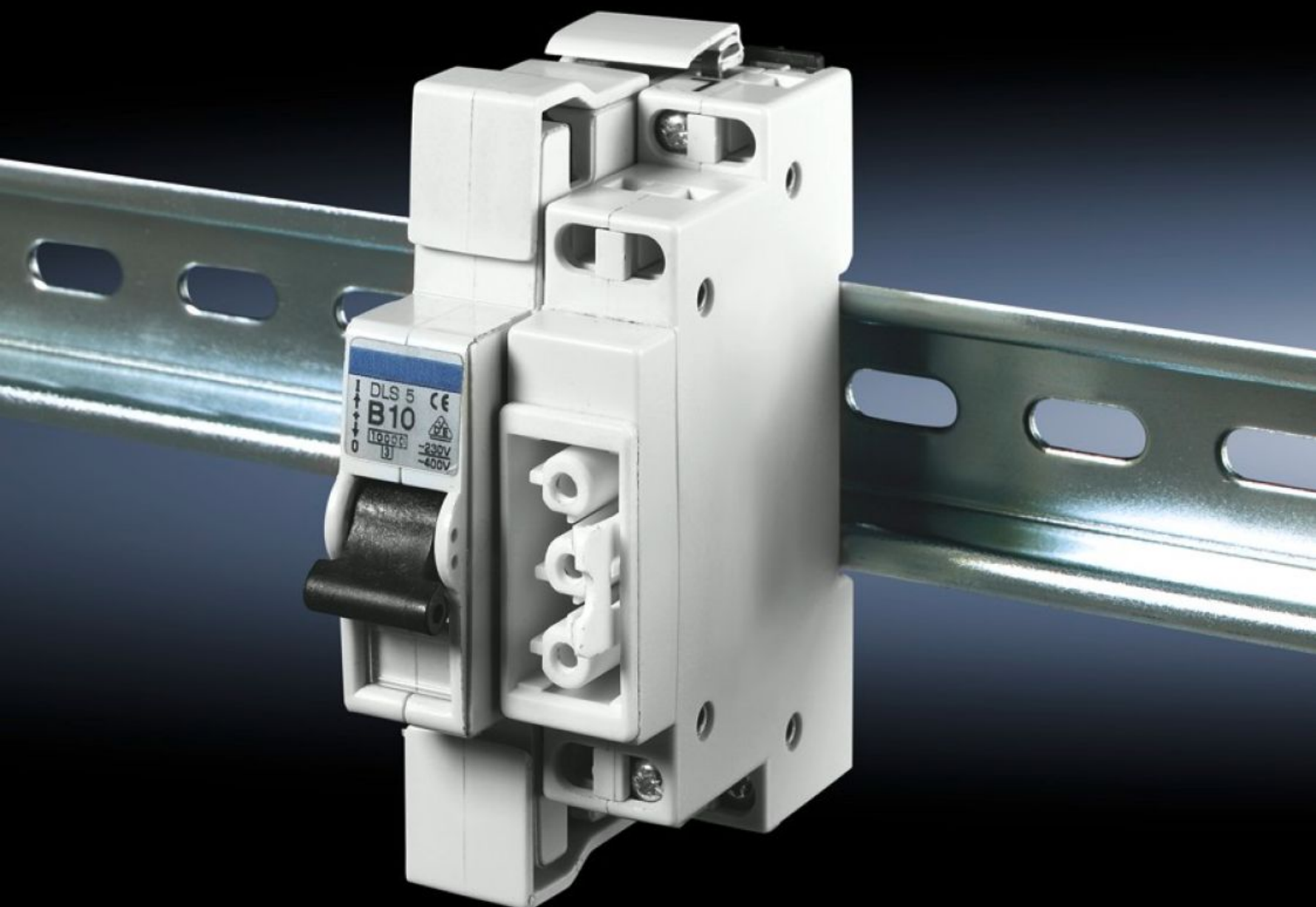


Rittal – The System.

Faster – better – everywhere.



SZ 2507.500

Connection component: with circuit-breaker 10 A

State: 1/07/2025 (Source: rittal.com/uk-en)

ENCLOSURES

POWER DISTRIBUTION

CLIMATE CONTROL

IT INFRASTRUCTURE

SOFTWARE & SERVICES

FRIEDHELM LOH GROUP



SZ 2507.500 - Connection component:with circuit-breaker 10 A

Connection component to be snapped onto the top hat rail.

Features

Model No.	SZ 2507.500
Product description	Connection component to be snapped onto the top hat rail
Benefits	Reduce assembly costs: Power is supplied rapidly and reliably to system and workstation lights via connection cables
Rated impulse withstand voltage, phase to phase	4000 V AC
Rated insulation voltage	400 V AC
Assembly instruction	For independently configured cables, connector 2507.200 must be used
Rated operating voltage	230 V - 400 V
Packs of	1 pc(s).
Net weight	0.179
Gross weight	0.197
Customs tariff number	85369095
EAN	4028177233409
ETIM 9	EC002625
ETIM 8	EC002625
ECLASS 8.0	27189234

Approvals

Certificates	EAC
--------------	-----

Approvals

Explanations

Declaration of conformity

Declaration of conformity UK