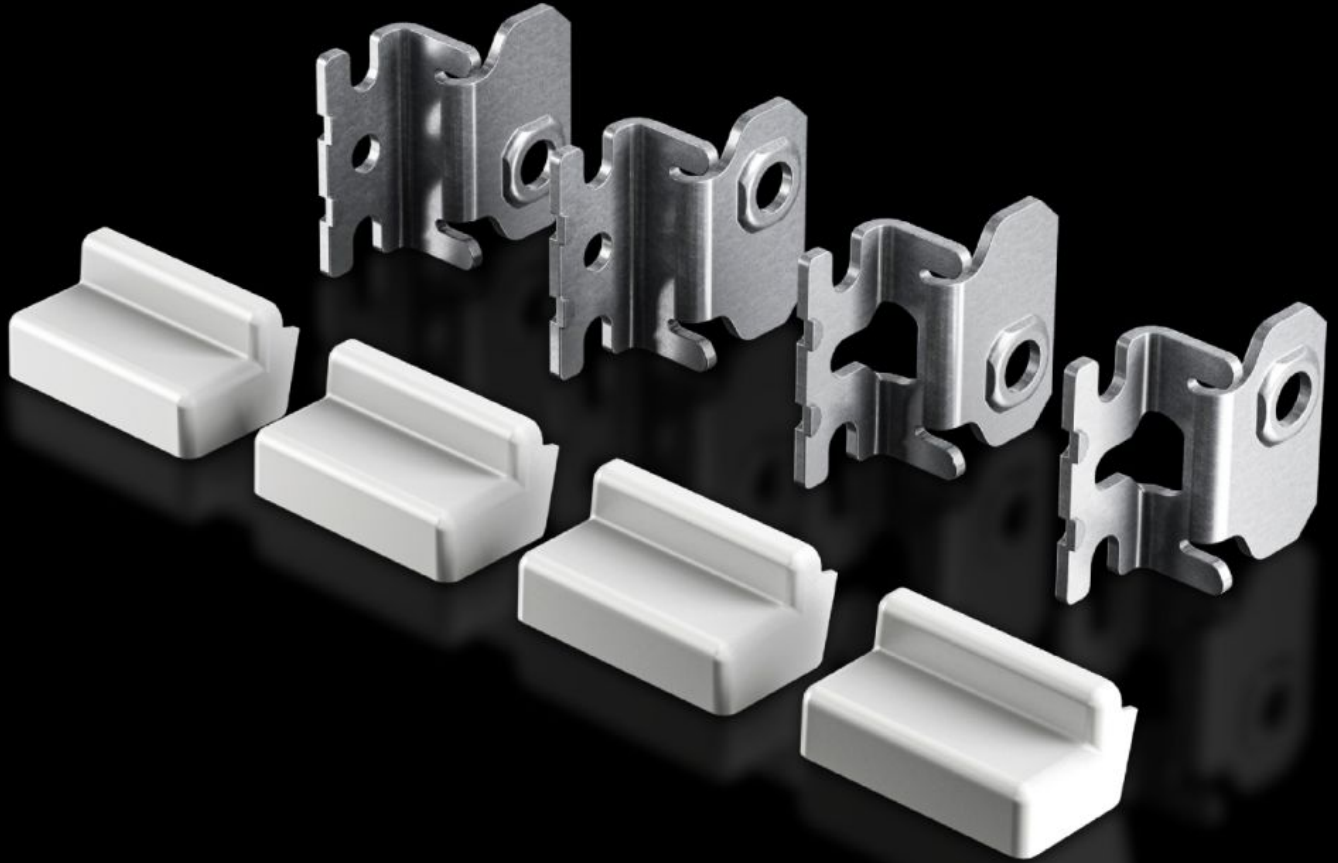


**Rittal – The System.**

Faster – better – everywhere.



**AX 2508.020**

**Wall mounting bracket**

State: 17/04/2026 (Source: [rittal.com/uk-en](http://rittal.com/uk-en))

ENCLOSURES

POWER DISTRIBUTION

CLIMATE CONTROL

IT INFRASTRUCTURE

SOFTWARE & SERVICES

FRIEDHELM LOH GROUP



# AX 2508.020 - Wall mounting bracket for AX sheet steel, KX sheet steel, AX IT, EL

Ideal for convenient one-person assembly of wall-mounted enclosures, even in confined spaces.

## Features

Model No.	AX 2508.020
Product description	Ideal for convenient one-person assembly of wall-mounted enclosures, even in confined spaces.
Benefits	<p>Screw-fastened directly from the rear with a self-tapping screw into the enclosure eyelet</p> <p>Simply suspend the wall-mounted bracket from a screw in the wall</p> <p>Different mounting positions allow the wall mounting bracket to be tailored to local conditions on site.</p> <p>As an alternative to the self-tapping screw, the support may also be secured from the inside using a screw and nut</p> <p>Additional option of attaching with a nut for dynamic applications</p>
Material	Sheet steel, zinc-plated
Supply includes	Wall mounting bracket Cover cap Assembly parts
Wall distance	20 mm
To fit	Enclosure type: AX sheet steel KX sheet steel AX IT EL AX wall-mounted enclosure, 3-part
Type rating to UL 50E	Type 1 Type 3R Type 4 Type 12
Packs of	4 pc(s).
Net weight	0.44 kg

# Features

---

Gross weight	0.44 kg
PCF per pack (cradle-to-gate)	1.7 kg CO2 eq (Cat B)
Note on PCF category	Category B: PCF value (cradle-to-gate) based on the product weight, approximately calculated and self-declared
Customs tariff number	83025000
ETIM 9	EC002625
ETIM 8	EC002625
ECLASS 8.0	27189234
Product description	SZ Wall mounting bracket, for AX and KX, sheet steel, wall distance: 20 mm

# Approvals

---

Approvals	DNV-GL UL + C-UL - FTTA
-----------	----------------------------