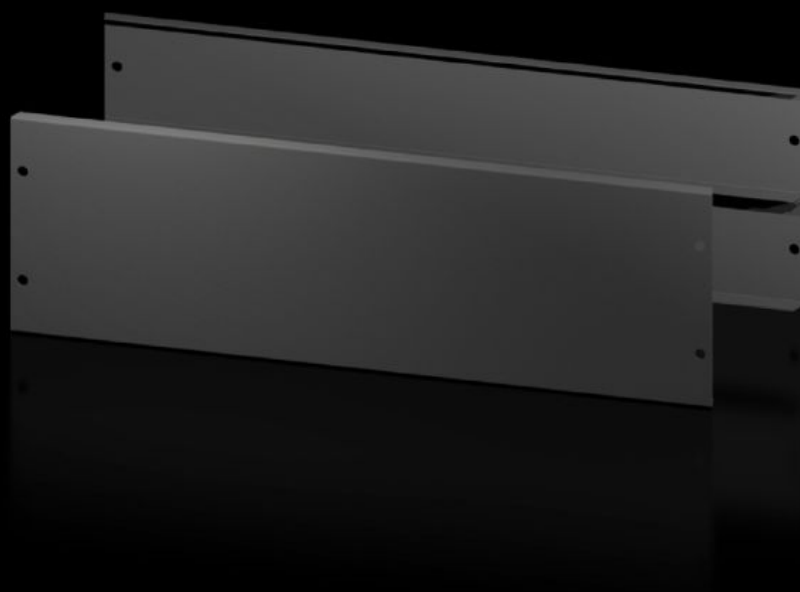


Rittal – The System.

Faster – better – everywhere.



AX 2830.082

Base/plinth trim panels, front and rear

State: 19/08/2025 (Source: rittal.com/uk-en)

ENCLOSURES

POWER DISTRIBUTION

CLIMATE CONTROL

IT INFRASTRUCTURE

SOFTWARE & SERVICES

FRIEDHELM LOH GROUP



AX 2830.082 - Base/plinth trim panels, front and rear for AX

The base/plinth trim panels at the front and rear provide a wide opening for optimum access to the screw connection and simple cable entry.



Features

Model No.	AX 2830.082
Design	New version
Product description	The base/plinth trim panels at the front and rear provide a wide opening for optimum access to the screw connection and simple cable entry.
Material	Base/plinth trim panel front/rear: Sheet steel
Colour	RAL 9005
Supply includes	2 base/plinth trim panels, front/rear
Note	Base/plinth elements are required at the side to finish off a base/plinth unit Components from the 1st generation base/plinth system cannot be combined with components from the 2nd generation base/plinth system
Dimensions	Height: 200 mm
To fit	Enclosure type: AX Width: = 800 mm
Packs of	2 pc(s).
Net weight	3.6
Gross weight	3.746

Features

Customs tariff number	94039910
EAN	4028177037458
ETIM 9	EC000721
ETIM 8	EC000721
ECLASS 8.0	27182003

Approvals

Approvals	UL + C-UL - FTTA
-----------	------------------