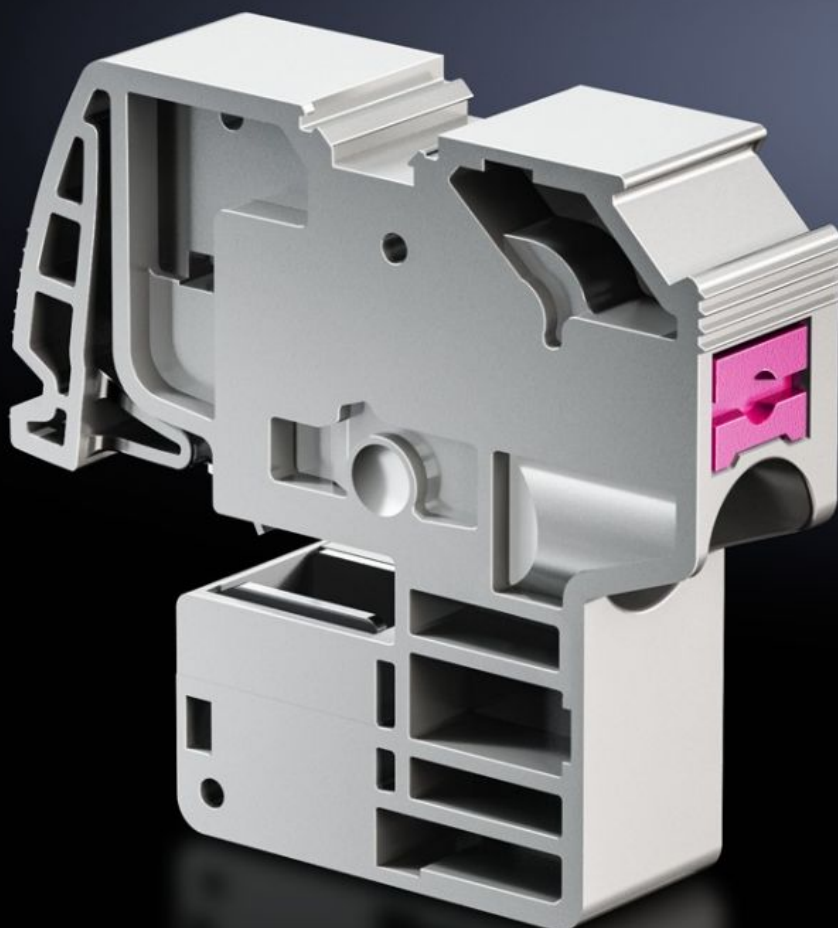


**Rittal – The System.**

Faster – better – everywhere.



**SV 3451.505**

**Conductor connection clamp**

State: 22/06/2025 (Source: [rittal.com/uk-en](https://rittal.com/uk-en))

ENCLOSURES

POWER DISTRIBUTION

CLIMATE CONTROL

IT INFRASTRUCTURE

SOFTWARE & SERVICES

FRIEDHELM LOH GROUP



# SV 3451.505 - Conductor connection clamp Push-in

For the connection of round conductors.

## Features

Model No.	SV 3451.505
Benefits	Maintenance-free Time-saving top-mounting Terminal box with integral label panels Universal conductor connection
Applications	For use as busbar pick-off of L, N or PE conductors in switchgear and controlgear, and as a conductor connection clamp in meter boxes. For mounting on E-Cu or CUPONAL busbars
Function principle	Fully insulated terminal for tool-free conductor connection Conductor is released by the integral release pin
Material	Polyamide Fire protection corresponding to UL 94-V0
Colour	RAL 7042
Test specification	IEC 60 999-1 IEC 60 947-7-1/-2
Connection of round conductors, fine wire with wire end ferrule	1.5 - 16 mm <sup>2</sup>
Connection of round conductors, fine wire without wire end ferrule	1.5 - 16 mm <sup>2</sup>
Connection of round conductors, multi-wire	1.5 - 16 mm <sup>2</sup>
Connection of round conductors, single-wire	1.5 - 16 mm <sup>2</sup>
For bar thickness	5 mm
Packs of	10 pc(s).
Net weight	0.22

# Features

Gross weight	0.245
PCF per pack (cradle-to-gate)	0.9 kg CO2 eq (Cat B)
Note on PCF category	Category B: PCF value (cradle-to-gate) based on the product weight, approximately calculated and self-declared
Customs tariff number	85369010
EAN	4028177813977
ETIM 9	EC000001
ETIM 8	EC000001
ECLASS 8.0	27141146

# Approvals

Approvals	ABS Lloyds Register of Shipping UR + C-UR (recognized)
Explanations	Declaration of conformity