

Rittal – The System.

Faster – better – everywhere.



AS 4051.233 Wire rail WT

State: 17/02/2026 (Source: rittal.com/uk-en)

ENCLOSURES

POWER DISTRIBUTION

CLIMATE CONTROL

IT INFRASTRUCTURE

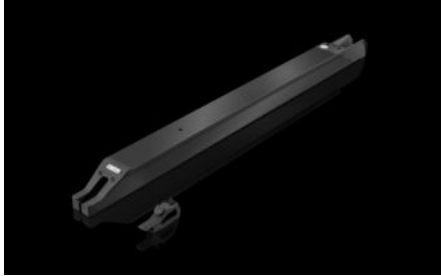
SOFTWARE & SERVICES

FRIEDHELM LOH GROUP



AS 4051.233 - Wire rail WT

The pre-assembled wires are fed into the WT 30 wire rail with a cross-section of 1.0 mm² by the removal handling system.



Features

Model No.	AS 4051.233
Benefits	Project-specific order picking for downstream processes Project-specific sorting of the wires Optimum removal handling Busbar system prepared for optimum workstation order-picking No wire sorting required Simplifies the wiring process with step-by-step instructions in Eplan Smart Wiring Ideal in conjunction with the Wire Cart for perfect workstation order picking
Supply includes	Wire rail WT 30
Note	This gap size indicates the maximum diameter of the wire insulation.
To fit Model No.	4051.205 4051.210 4051.024 4051.036
Applications	For single wires with cross-section 1.0 mm ² (gap size 3.0 mm)
Packs of	1 pc(s).
Net weight	0.8 kg
Gross weight	0.84 kg
Customs tariff number	76169990

Features

Product description

Wire rail, 1.0 mm² for the 15-way rail system in the WT