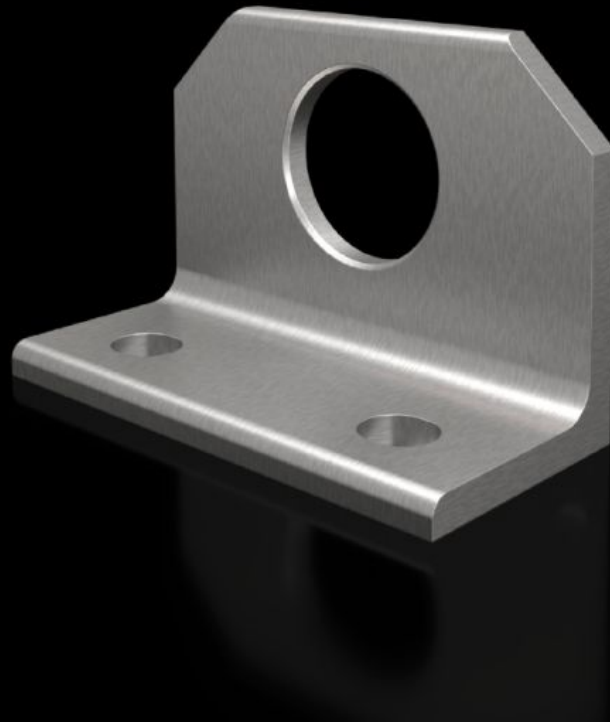


Rittal – The System.

Faster – better – everywhere.



SZ 4540.500 Combination angle

State: 11/05/2026 (Source: rittal.com/uk-en)

ENCLOSURES

POWER DISTRIBUTION

CLIMATE CONTROL

IT INFRASTRUCTURE

SOFTWARE & SERVICES

FRIEDHELM LOH GROUP



SZ 4540.500 - Combination angle for VX, TS

For optimum distribution of tensile forces during transportation of bayed enclosures by crane.



Features

| | |
|-------------------------------------|--|
| Model No. | SZ 4540.500 |
| Product description | For optimum distribution of tensile forces during transportation of bayed enclosures by crane. |
| Material | Stainless steel 1.4301 (AISI 304) |
| Supply includes | Assembly parts |
| To fit | Enclosure type: VX TS |
| Type rating to UL 50E | Type 1 Type 12 |
| Protection category NEMA | NEMA 1, 12 |
| IP protection category to IEC 60529 | IP 55 |
| Packs of | 2 pc(s). |
| Net weight | 1.2 kg |
| Gross weight | 1.4 kg |
| PCF per pack (cradle-to-gate) | 5.3 kg CO2 eq (Cat B) |
| Note on PCF category | Category B: PCF value (cradle-to-gate) based on the product weight, approximately calculated and self-declared |
| Customs tariff number | 73182900 |

Features

| | |
|---------------------|---------------------------------------|
| ETIM 9 | EC002622 |
| ETIM 8 | EC002622 |
| ECLASS 8.0 | 27189234 |
| Product description | SZ combination angle, stainless steel |

Approvals

| | |
|-----------|------------------|
| Approvals | UL + C-UL - FTTA |
|-----------|------------------|
