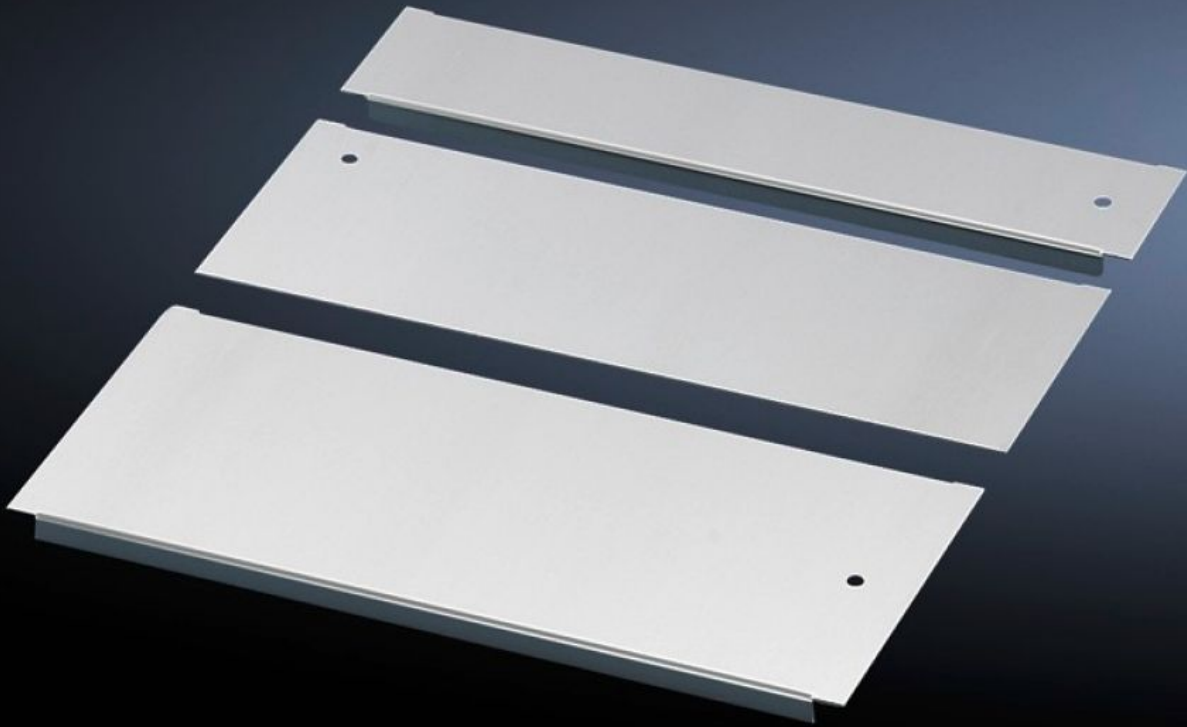


Rittal – The System.

Faster – better – everywhere.



DK 5502.510

Gland plate

State: 4/06/2026 (Source: rittal.com/uk-en)

ENCLOSURES

POWER DISTRIBUTION

CLIMATE CONTROL

IT INFRASTRUCTURE

SOFTWARE & SERVICES

FRIEDHELM LOH GROUP



DK 5502.510 - Gland plate for TS IT, TX CableNet

Potential equalisation is provided via assembly components and earthing points. The gland plate set is used to conceal the entire base opening.

Features

Model No.	DK 5502.510
Design	Gland plate, solid, with sliding panel, multi-piece
Product description	Potential equalisation is provided via assembly components and earthing points. Gland plate set: To conceal the entire base opening. Gland plate modules: Select suitable modules depending on the application.
Material	Sheet steel
Surface finish	Zinc-plated
Supply includes	Assembly parts
Note	To select the required module plates for completing the base area, please observe the information about the base mount included in the assembly instructions.
To fit	Enclosure type: TS IT Width: 800 mm Depth: 600 mm
Packs of	1 pc(s).
Net weight	4.776 kg
Gross weight	5.027 kg
Customs tariff number	94039910
ETIM 9	EC002620
ECLASS 8.0	27189261
Product description	DK Gland plate Set, WxD: 800x600 mm, For TS IT, solid, multi-piece

Tender text

Gland plate Set,
with sliding plate
solid, multi-piece
WxD: 800x600 mm,
for TS IT, TX CableNet
Sheet steel, zinc-plated