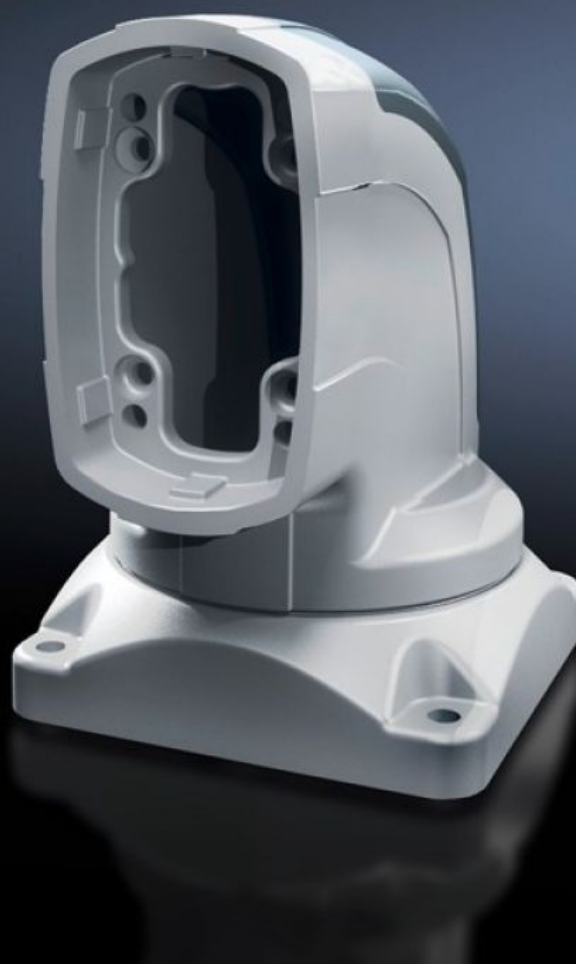


Rittal – The System.

Faster – better – everywhere.



CP 6218.700

Top-mounted joint CP 180

State: 8/12/2025 (Source: [rittal.com/uk-en](https://www.rittal.com/uk-en))

ENCLOSURES

POWER DISTRIBUTION

CLIMATE CONTROL

IT INFRASTRUCTURE

SOFTWARE & SERVICES

FRIEDHELM LOH GROUP



CP 6218.700 - Top-mounted joint CP 180 Horizontal outlet

For swivel mounting of the support arm system on horizontal surfaces – also suitable for suspending from the ceiling. Removable cover for simple cable entry.

Features

Model No.	CP 6218.700
Product description	For swivel mounting of the support arm system on horizontal surfaces – also suitable for suspending from the ceiling. Removable cover for simple cable entry.
Material	Top-mounted joint: Cast steel Cover: Plastic
Colour	Top-mounted joint: RAL 7035 Cover: RAL 7024
Supply includes	Seals Screws for restricting rotation range Adjusting screws Self-tapping screws for support section attachment
Rotating/tilting	Yes
Rotation angle/swivel area	approx. 330°. The range of rotation can be limited by inserting the screws/limit plate provided.
Packs of	1 pc(s).
Net weight	18
Gross weight	18.65
PCF per pack (cradle-to-gate)	68.6 kg CO2 eq (Cat B)
Note on PCF category	Category B: PCF value (cradle-to-gate) based on the product weight, approximately calculated and self-declared
Customs tariff number	73269098
EAN	4028177683860
ETIM 9	EC000882

Features

ECLASS 8.0	27400556
------------	----------

Approvals

Explanations	Manufacturer's declaration
--------------	----------------------------