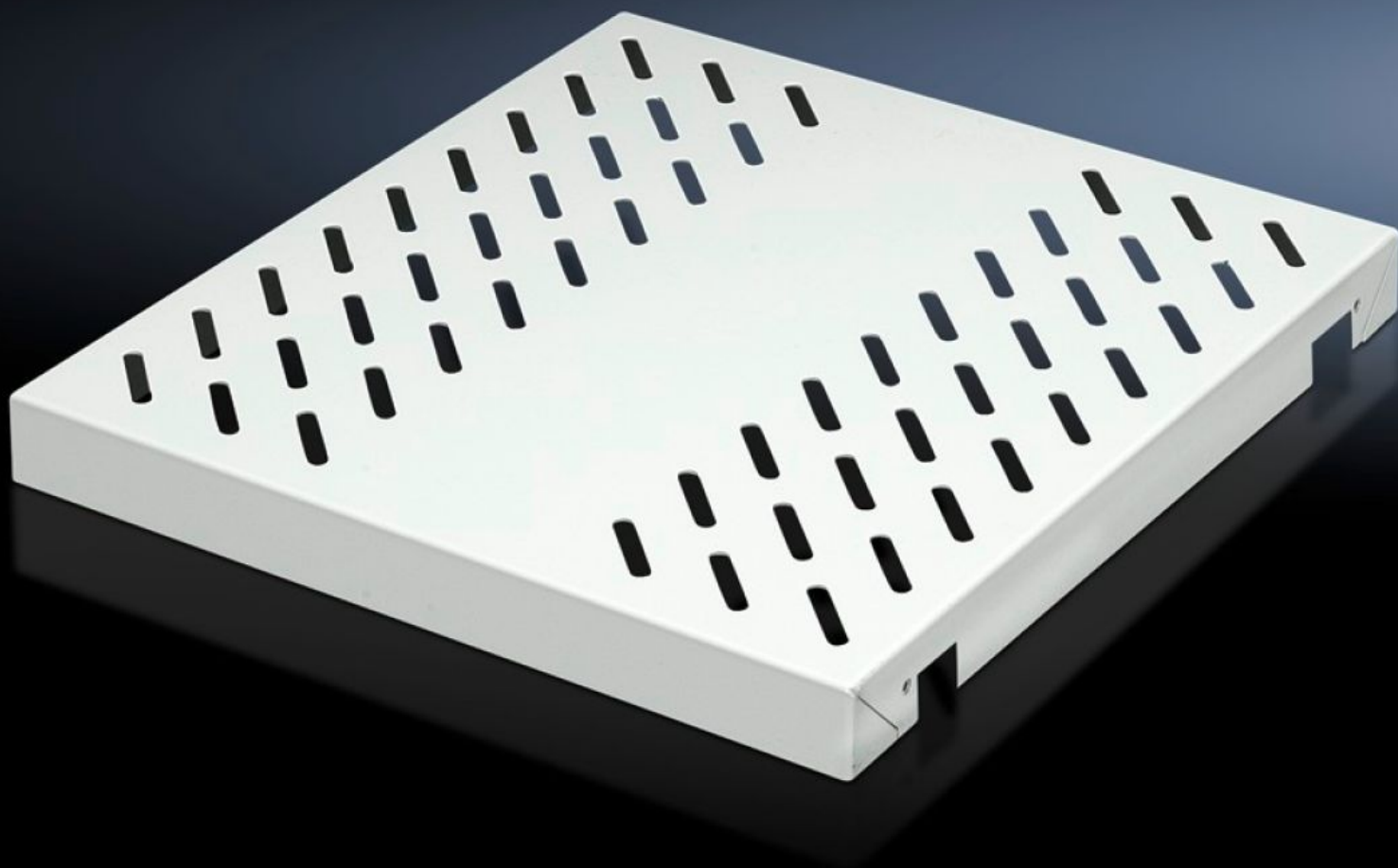


# Rittal – The System.

Faster – better – everywhere.



## DK 7063.895

## Component shelf, heavy duty

State: 15/12/2025 (Source: [rittal.com/uk-en](http://rittal.com/uk-en))

ENCLOSURES

POWER DISTRIBUTION

CLIMATE CONTROL

IT INFRASTRUCTURE

SOFTWARE & SERVICES

FRIEDHELM LOH GROUP



# DK 7063.895 - Component shelf, heavy duty 482.6 mm (19") for TE, TS

For mounting on L-shaped mounting angles and 482.6 mm (19") mounting frame, load capacity: 100 kg.

## Features

|                       |   |
|-----------------------|---|
| Model No.             | DK 7063.895   |
| Product description   | L-shaped mounting angles, 482.6 mm (19") mounting frame |
| Material              | Sheet steel   |
| Colour                | RAL 7035  |
| Supply includes       | Assembly parts  |
| Load capacity         | 100 kg area load  |
| Dimensions            | Width: 409 mm<br>Height: 45 mm<br>Depth: 500 mm         |
| Packs of              | 1 pc(s).  |
| Net weight            | 5.433   |
| Gross weight          | 5.719   |
| Customs tariff number | 94039910  |
| EAN                   | 4028177305595   |
| ECLASS 8.0            | 27189261  |

# Tender text

482.6 mm (19") heavy duty component shelf

For component shelf D = 500 mm

Material: Sheet steel, spray finished in RAL 7035

Load capacity: 100 kg surface load, static