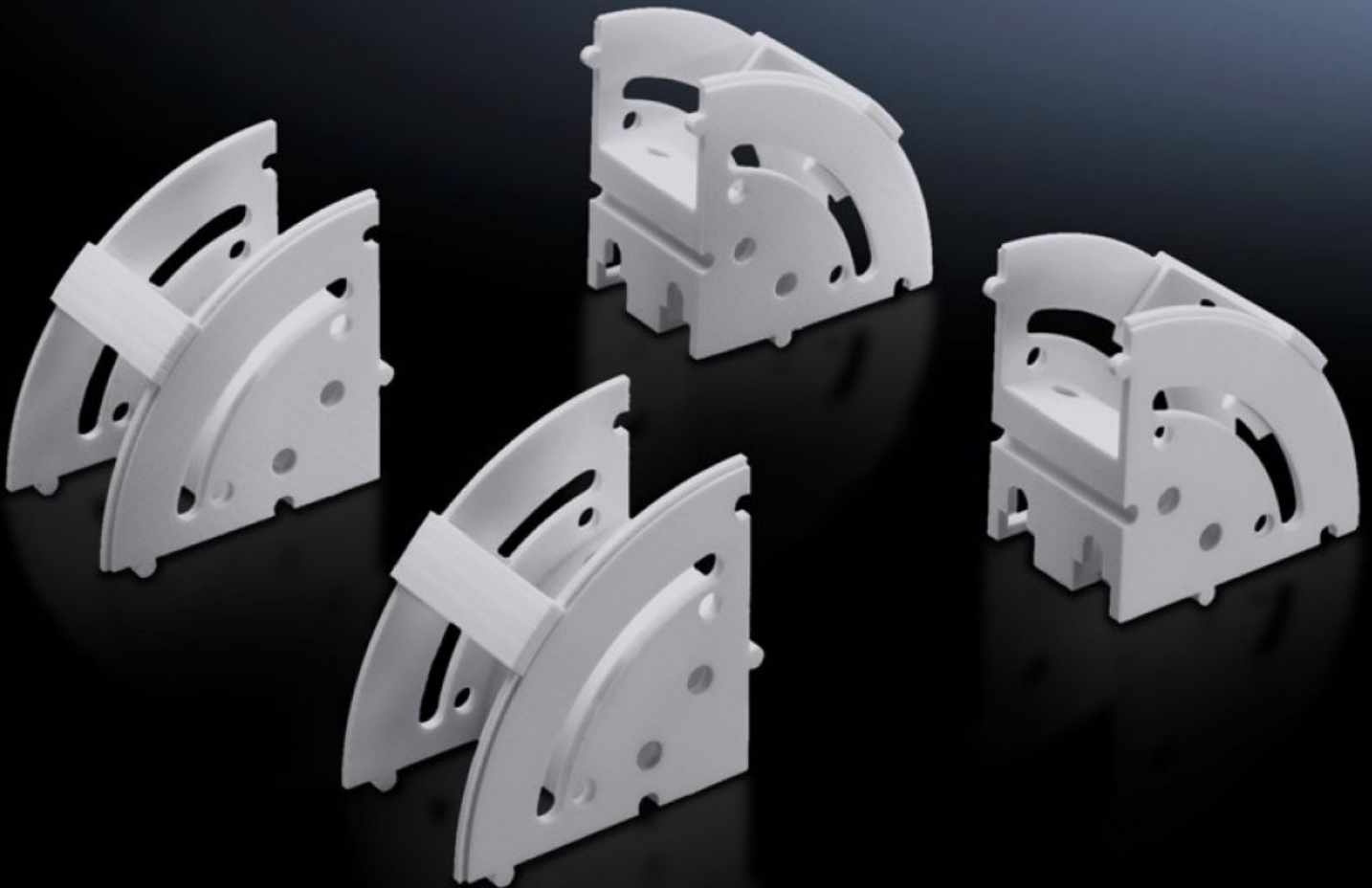


# Rittal – The System.

Faster – better – everywhere.



## DK 7064.100 Cable manager

State: 15/06/2026 (Source: [rittal.com/uk-en](http://rittal.com/uk-en))

ENCLOSURES

POWER DISTRIBUTION

CLIMATE CONTROL

IT INFRASTRUCTURE

SOFTWARE & SERVICES

FRIEDHELM LOH GROUP



# DK 7064.100 - Cable manager

For system-compatible cable deflection and to accommodate surplus cables and excess length, the elements may optionally be used individually or in combination for cable routing.



## Features

Model No.	DK 7064.100
Product description	For system-compatible cable deflection while complying with minimal bending radii and to accommodate surplus cables and excess length. The elements may optionally be used individually or in combination for cable routing. They may be combined into semi-circular or circular elements.
Benefits	Simple assembly with tool-free quick-release fastening Alternatively suitable for screw-fastening Integral multifunctional punching for attaching cable routing components Integral mounting holes for fixing the PDUs in a 7 U pitch pattern via a keyhole recess
Applications	For vertical cable routing and strain relief with network and server applications
Material	Plastic to UL 94-V0
Colour	RAL 7035
Supply includes	Mounting clips and assembly parts
Packs of	8 pc(s).
Net weight	0.544 kg
Gross weight	0.557 kg

# Features

---

Customs tariff number	39269097
ETIM 9	EC002624
ECLASS 8.0	27189265

---

# Tender text

## Cable manager, Basic kit

For system-compatible cable deflection while complying with minimal bending radii and to accommodate surplus cables and excess length. The elements may optionally be used individually or in combination for cable routing. They may be combined into semi-circular or circular elements. As the mounting distance between the elements grows larger, the deflection radius of the cables may optionally be enlarged, or the cable route designed individually. The option of securing elements on their straight-edge side supports the use of corners and edges, to allow protected cable routing around them.

Mounting clips for use above the arc hold the routed cables back within the elements.

The elements are also bayable in an axial direction to allow U-based cable routing to the mounting level, or channelling of the cable sections.

### Material:

Plastic, UL 94-V0

### Colour:

RAL 7035

### Supply includes:

Packs of 8

Mounting clip  
and assembly parts.