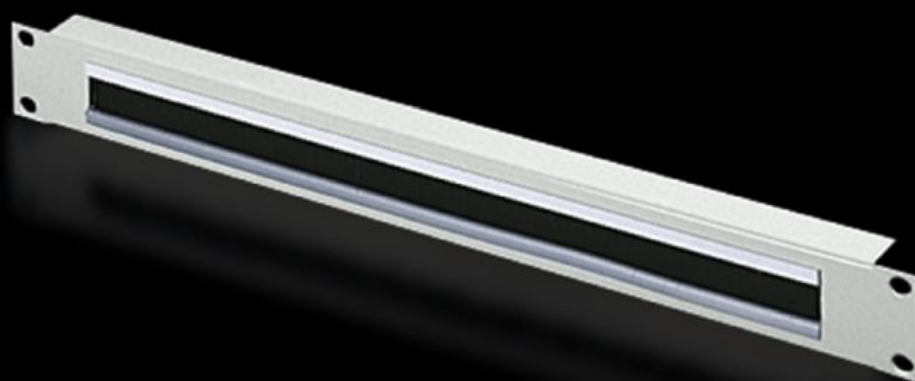


Rittal – The System.

Faster – better – everywhere.



DK 7140.535

Cable management panel with brush strip

State: 9/09/2025 (Source: rittal.com/uk-en)

ENCLOSURES

POWER DISTRIBUTION

CLIMATE CONTROL

IT INFRASTRUCTURE

SOFTWARE & SERVICES

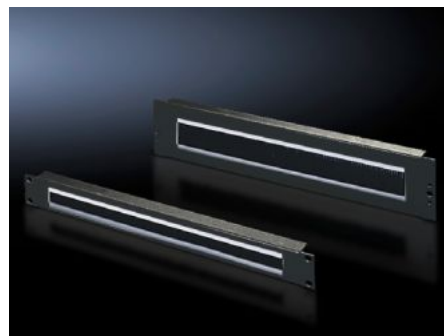
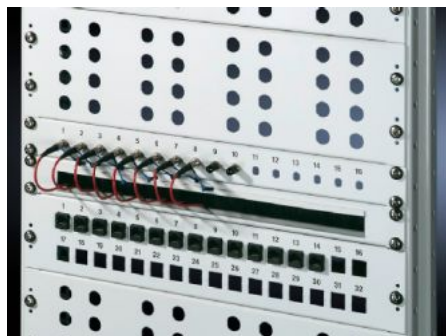
FRIEDHELM LOH GROUP



DK 7140.535 - Cable management panel with brush strip

482.6 mm (19")

With cut-out 390 x 40 mm (2 U) or 390 x 20 mm (1 U) with brush insert, accommodation facility for cable clamp straps.



Features

Model No.	DK 7140.535
Product description	For convenient, simple cable routing between two areas separated by a 482.6 mm (19") mounting level, for example, between the front and rear areas of the 482.6 mm (19") mounting level.
Applications	For locking and simultaneous cable routing in installation zones to the 1 U, 482.6 mm (19") mounting standard
Material	Sheet steel Brush strip: Plastic, UL 94-HB
Surface finish	Spray-finished
Colour	RAL 7035
Mounting cut-out	Width:390 mm Height:20 mm
Dimensions	Width: 482.6 mm
Units	1 U
Packs of	1 pc(s).
Net weight	0.43
Gross weight	0.475

Features

Customs tariff number	73269098
EAN	4028177166608
E-Number Sweden	E7239716
ETIM 9	EC000322
ECLASS 8.0	27400604

Tender text

482.6 mm (19") cable entry panel, 1 U

482.6 mm (19") cable entry panel, 1 U; the cables are fed in through the cutout (410 x 18 mm). The cutout also has an edge protector and a brush insert that protects against dust

Material: Sheet steel

Colour: RAL 7035