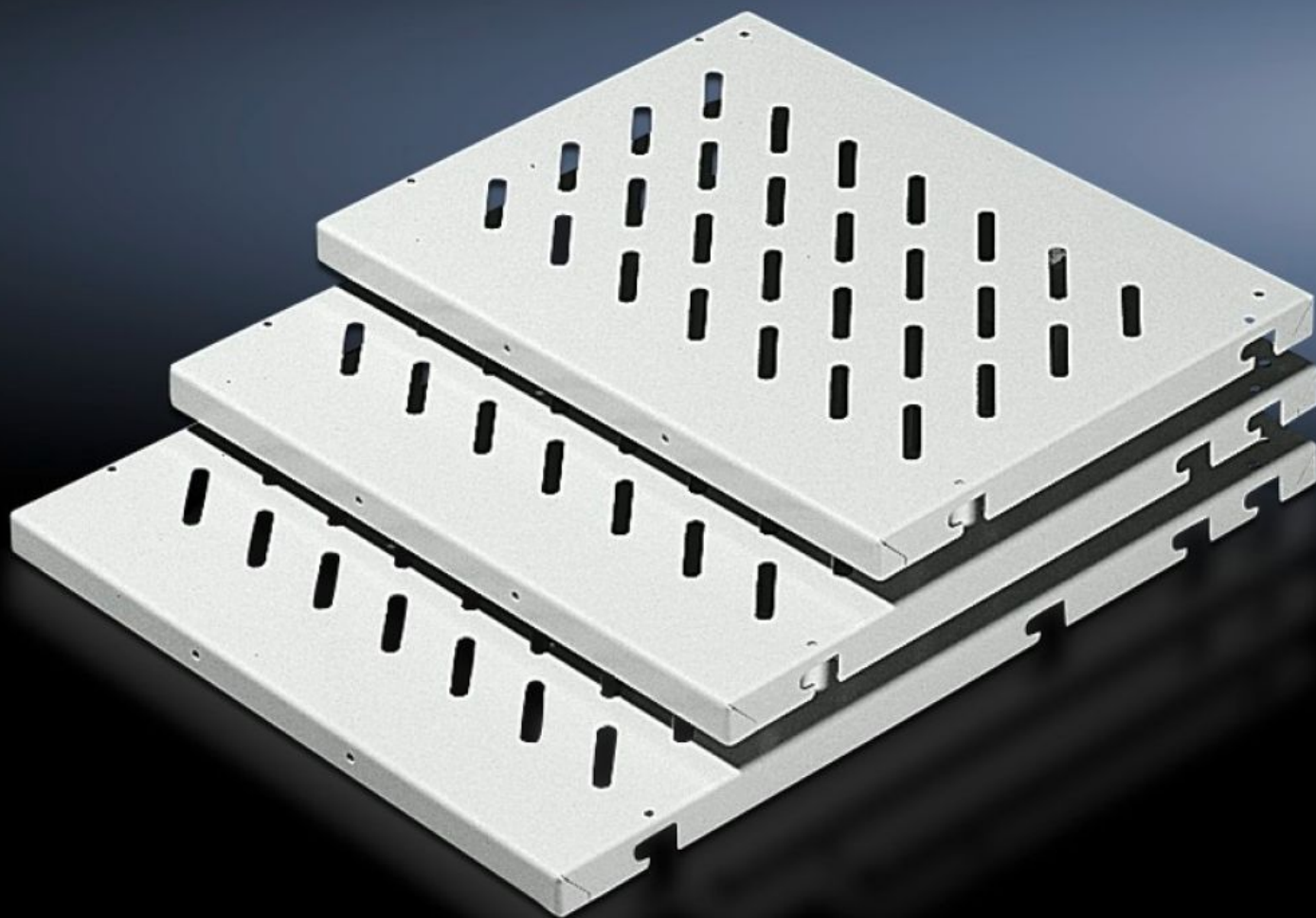
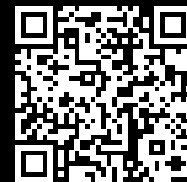


**Rittal – The System.**

Faster – better – everywhere.



**DK 7145.635**

**Component shelf, 482.6 mm (19")  
configuration**

State: 19/02/2026 (Source: [rittal.com/uk-en](http://rittal.com/uk-en))

ENCLOSURES

POWER DISTRIBUTION

CLIMATE CONTROL

IT INFRASTRUCTURE

SOFTWARE & SERVICES

FRIEDHELM LOH GROUP



# DK 7145.635 - Component shelf, 482.6 mm (19") configuration Enclosures with L-shaped mounting angles front and rear

Provide several attachment points, so the distance between the 482.6 mm (19") mounting angles is variable, load capacity: 50 kg.

## Features

Model No.	DK 7145.635
Product description	Depending on their depth, the component shelves have several attachment points, so the distance between the 482.6 mm (19") mounting angles is variable within certain limits. Each component shelf secured in this way can be retrospectively upgraded to full withdrawal using telescopic slides. For this purpose, the telescopic slides are screw-fastened in place of the spacers.
Applications	For mounting two between 482.6 mm (19") mounting angles For upgrading legacy TS items
Material	Sheet steel
Colour	RAL 7035
Supply includes	Assembly parts
Distance between mounting levels	448 mm 548 mm 598 mm
Load capacity	50 kg area load
Note	For TS: If L-shaped mounting angles based on TS are used in network enclosures, adaptor 7827.300 is required For TS, 482.6 mm (19") system punchings: The depth-variable installation kit 7063.850 allows flexible mounting between two L-shaped mounting angles directly on the 19" system punchings.
Dimensions	Width: 409 mm Depth: 600 mm
Packs of	1 pc(s).

# Features

Net weight	2.982 kg
Gross weight	3.182 kg
Customs tariff number	94039910
ETIM 9	EC002620
ECLASS 8.0	27189261
Product description	DK Component shelf, WxD: 409x600 mm, 50 kg, distance between levels: variable, depth-variable on 2 482.6 mm (19") attachment levels, RAL 7035

# Tender text

Component shelf for 482.6 mm (19")attachment levels

Component shelf made from 1.5 mm steel sheet for network enclosures with two 482.6 mm (19") attachment levels. The component shelf has slots for preventing heat accumulation and can be loaded up to a maximum of 50 kg. The component shelf is fitted on U-pitch pattern mounting angles and the height can be adjusted linearly as per the U-pitch pattern, using the T-slot mounting angles

Material: Sheet steel

Paint finish: RAL 7035

W x D dimensions: 409 x 600 mm