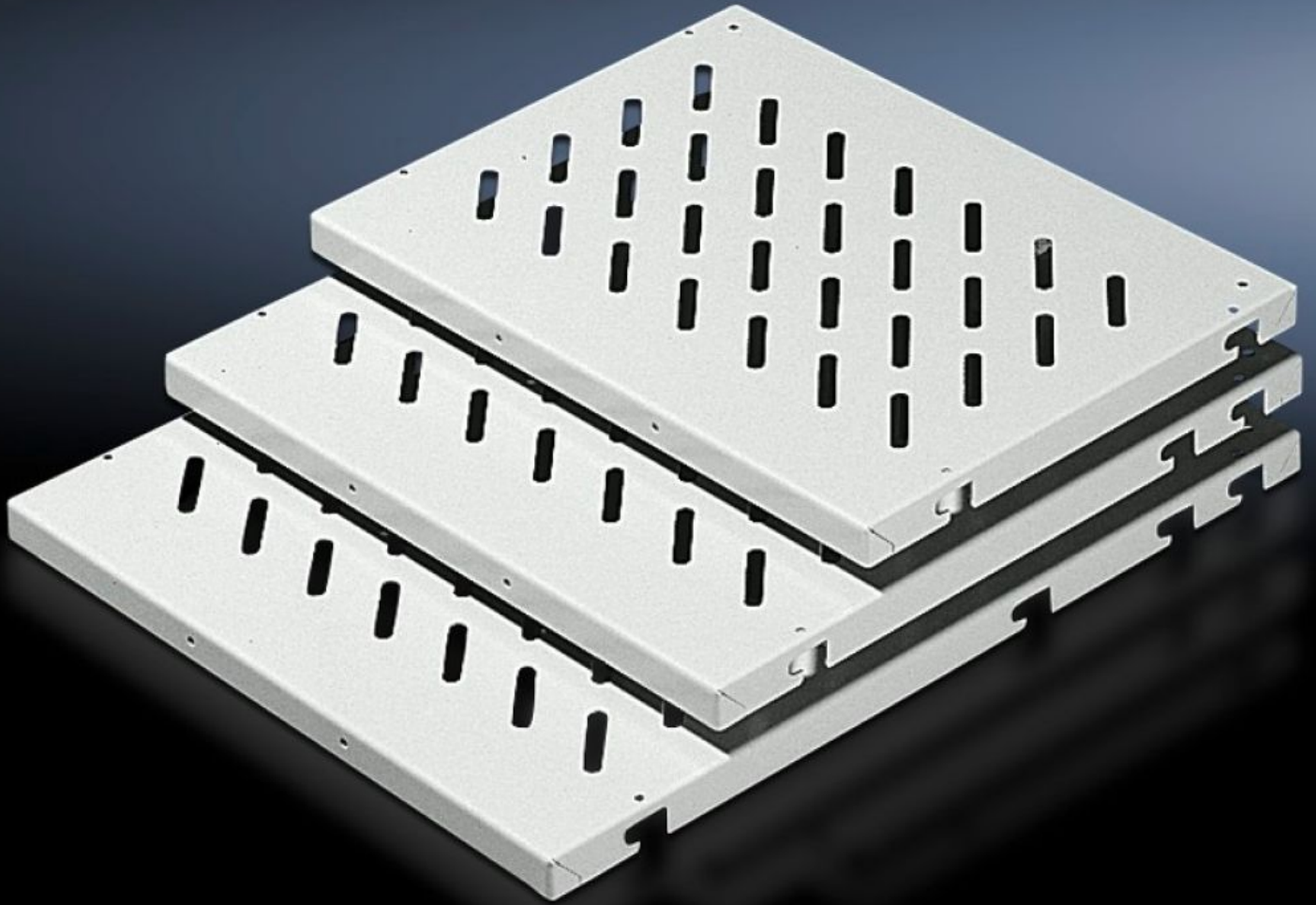


Rittal – The System.

Faster – better – everywhere.



DK 7184.035

Component shelf for frame attachment

State: 14/05/2026 (Source: rittal.com/uk-en)

ENCLOSURES

POWER DISTRIBUTION

CLIMATE CONTROL

IT INFRASTRUCTURE

SOFTWARE & SERVICES

FRIEDHELM LOH GROUP



DK 7184.035 - Component shelf for frame attachment for enclosure widths 600 mm, 800 mm

For installation in enclosures without 482.6 mm (19") accommodation.

Features

Model No.	DK 7184.035
Design	Slotted
Product description	For frame attachment, for installation in enclosures without 482.6 mm (19") accommodation.
Benefits	Mounting bolts or mounting rails may be installed on a 25 mm pitch pattern in the enclosure depth. Mounting hole for handles provided.
Applications	For installation in enclosures without 482.6 mm (19") accommodation
Material	Sheet steel
Surface finish	Spray-finished
Colour	RAL 7035
Supply includes	Component shelf, slotted 4 pc(s). fixing bolts
Installation options	Static installation: Component shelf, 50 kg with fixing bolts on punched section without mounting flange Static installation: Component shelf, 100 kg with mounting rails on punched sections without mounting flange Depth variable: Component shelf, 50 kg with telescopic slides on punched sections without mounting flange
Load capacity	50 kg area load
Assembly instruction	Additionally, two punched sections with mounting flanges are required for the inner mounting level
Note	Max. depth of component shelves = Enclosure depth - 100 mm.

Features

Dimensions	Width: 671 mm Height: 29 mm Depth: 400 mm
To fit	Enclosure type: VX VX IT TS IT Width: 800 mm
Packs of	1 pc(s).
Net weight	3.264 kg
Gross weight	3.36 kg
PCF per pack (cradle-to-gate)	13.2 kg CO2 eq (Cat B)
Note on PCF category	Category B: PCF value (cradle-to-gate) based on the product weight, approximately calculated and self-declared
Customs tariff number	94039910
ETIM 9	EC002620
ECLASS 8.0	27189261
Product description	DK Component shelf, WHD: 671x29x400 mm, 50 kg, Slotted, For W: 800 mm, RAL 7035

Tender text

Component shelf for 800 mm wide network enclosures

Component shelf made from 1.5 mm sheet steel for use in 800 mm wide network enclosures. The component shelf has slots for preventing heat accumulation and can be loaded up to a maximum of 50 kg. The height of the fitted component shelves can be adjusted using the 25 mm pitch pattern in network enclosures with a DIN pitch pattern but is infinitely adjustable in network enclosures with aluminium frames.

Material: sheet steel

Surface finish: RAL 7035.

Dimensions: W x D: 671 x 400 mm