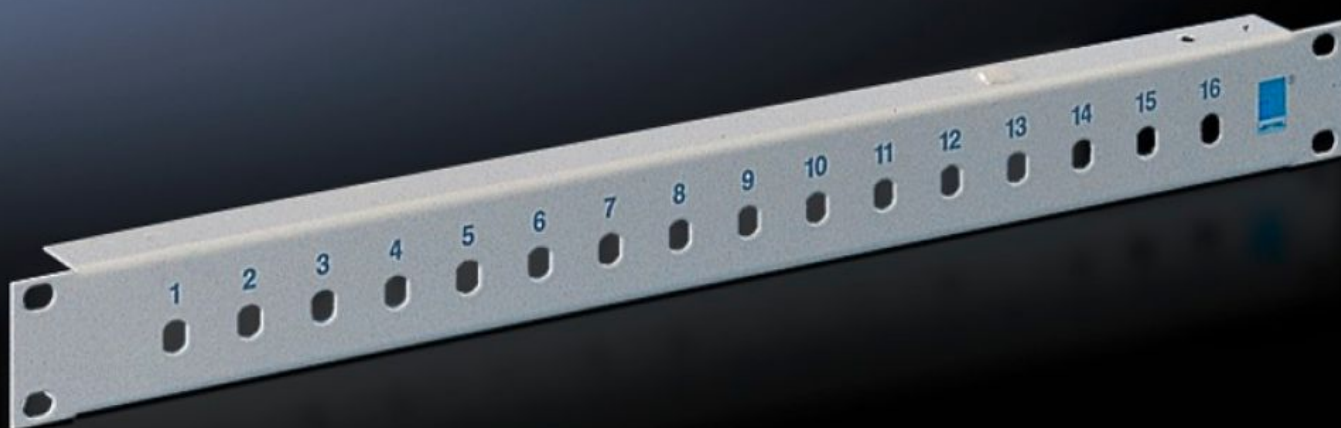


Rittal – The System.

Faster – better – everywhere.



DK 7437.035 Patch panel

State: 21/06/2025 (Source: [rittal.com/uk-en](https://www.rittal.com/uk-en))

ENCLOSURES

POWER DISTRIBUTION

CLIMATE CONTROL

IT INFRASTRUCTURE

SOFTWARE & SERVICES

FRIEDHELM LOH GROUP



DK 7437.035 - Patch panel to accommodate ST fibre-optic couplings

To accommodate ST fibre-optic couplings, with accommodation facility for cable clamp straps.

Features

Model No.	DK 7437.035
Product description	With accommodation facility for cable clamp straps DK 7610.000 or DK 7611.000.
Material	Sheet steel
Colour	RAL 7035
Number of locations	16
Note on Model No.	Extended delivery times.
Number of locations	:
Packs of	1 pc(s).
Net weight	0.465
Gross weight	0.565
Customs tariff number	94039910
EAN	4028177167773
ECLASS 8.0	19170113

Tender text

482.6 mm (19") patch panel, 1 U
For installing 16 ST fibre optic couplings including fixtures for holding the cable clamping devices.
Version: Sheet steel
Surface finish: RAL 7035