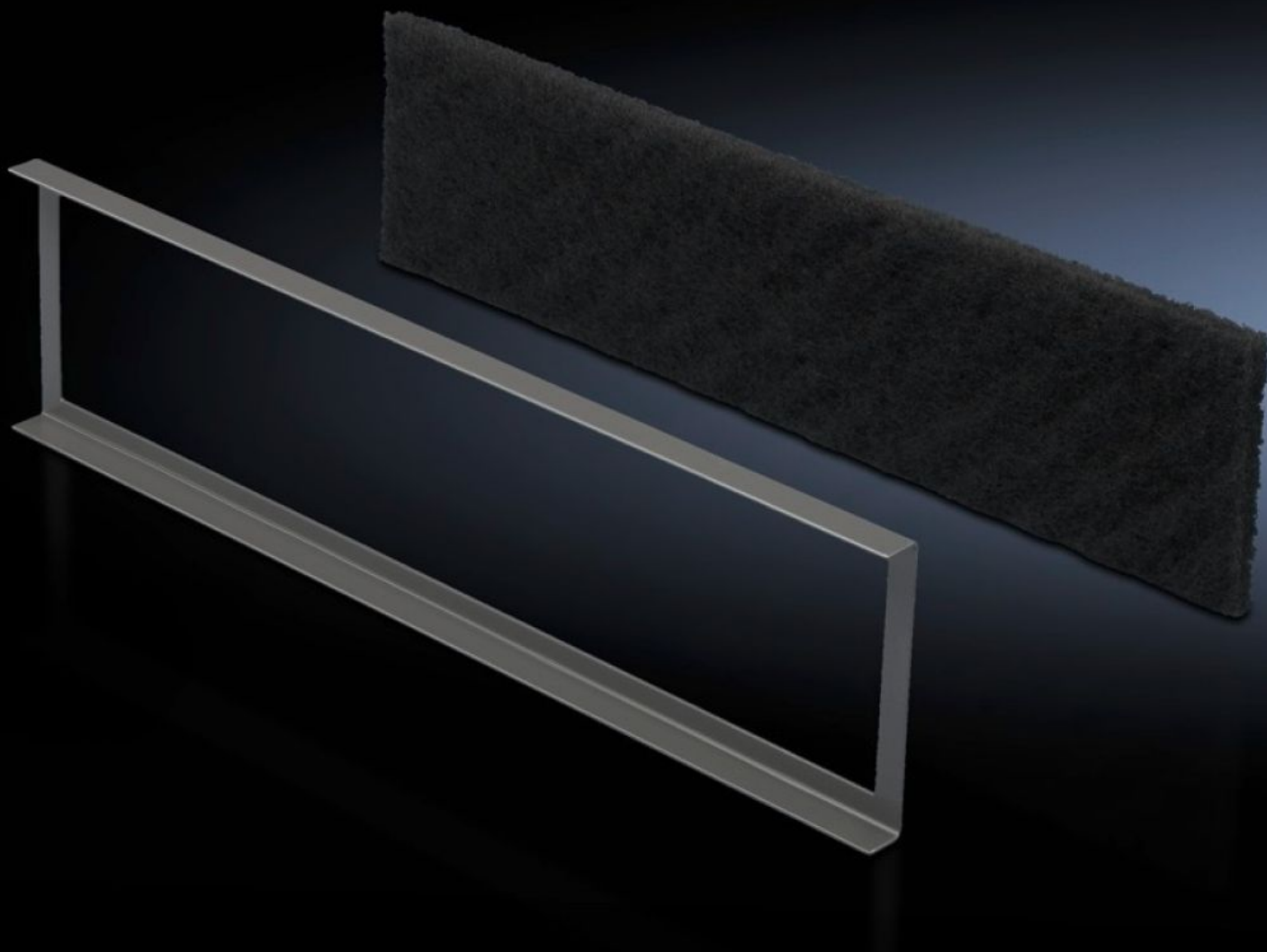


Rittal – The System.

Faster – better – everywhere.



DK 7561.500 Filter mat

State: 31/01/2026 (Source: [rittal.com/uk-en](https://www.rittal.com/uk-en))

ENCLOSURES

POWER DISTRIBUTION

CLIMATE CONTROL

IT INFRASTRUCTURE

SOFTWARE & SERVICES

FRIEDHELM LOH GROUP



DK 7561.500 - Filter mat for base/plinth component, vented and base/plinth component, vented, with designer trim panel

Mounting frame including filter mat for the base/plinth trim.

Features

Model No.	DK 7561.500
Product description	To cover the trim panel in the base/plinth component. The mounting frame slides into position behind the filter mat in the base/plinth trim panel. Filter class G3 to DIN EN 779.
Supply includes	Mounting frame
To fit	Width: 600 mm
Packs of	1 pc(s).
Net weight	0.23
Gross weight	0.3
Customs tariff number	56039390
EAN	4028177221284
ECLASS 8.0	27189272