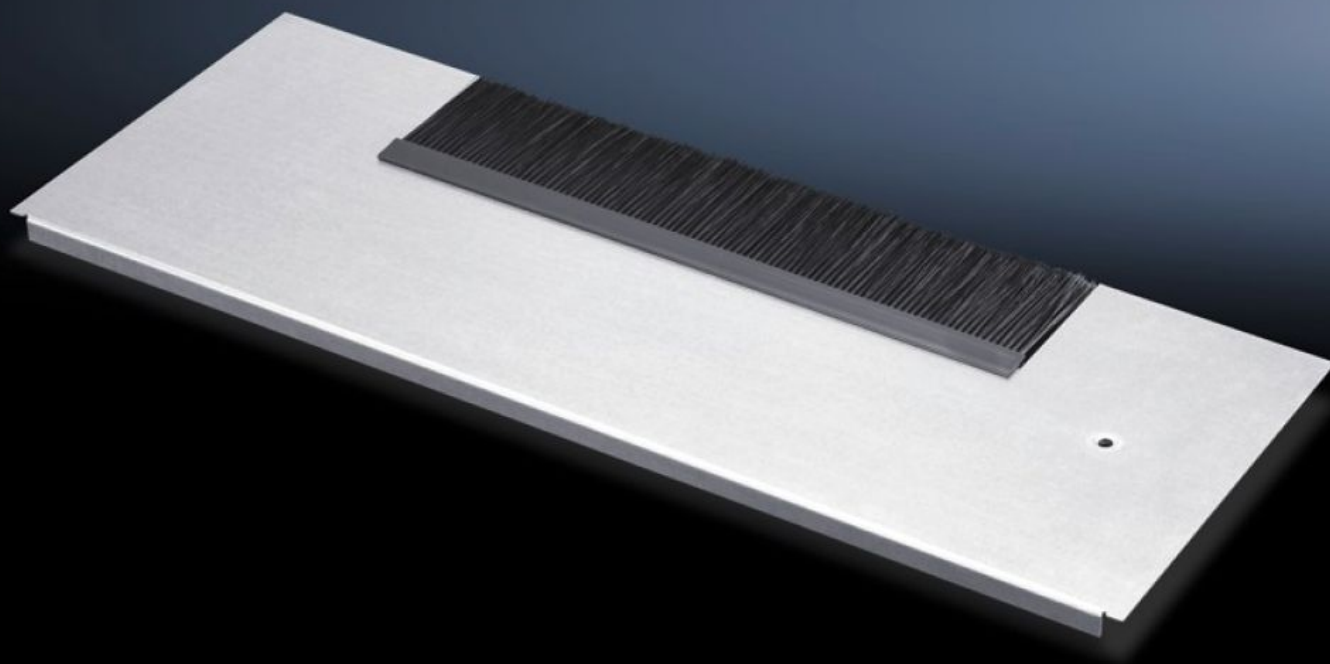
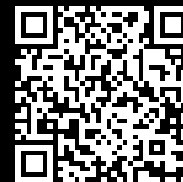


**Rittal – The System.**

Faster – better – everywhere.



**DK 7825.381**

**Gland plate modules for cable entry**

State: 17/07/2025 (Source: [rittal.com/uk-en](https://www.rittal.com/uk-en))

ENCLOSURES

POWER DISTRIBUTION

CLIMATE CONTROL

IT INFRASTRUCTURE

SOFTWARE & SERVICES

FRIEDHELM LOH GROUP



# DK 7825.381 - Gland plate modules for cable entry for TS IT, TS, SE, TX CableNet

Gland plate modules for cable entry, for TS, TS-IT, SE for use in the base frame of the network enclosure. Used in exchange for an existing gland plate of the same depth.

## Features

Model No.	DK 7825.381
Product description	For simple, sealed cable entry.
Material	Module plate: Sheet steel Brush strip: Plastic, UL 94 HB, halogen-free
Surface finish	Zinc-plated
Note	Several gland module plates need to be combined to close off the base completely in the TS-IT
Dimensions	Depth: 237.5 mm
To fit	Enclosure type: TS IT TS VX SE TX CableNet Width: 800 mm
Packs of	1 pc(s).
Net weight	1.75
Gross weight	1.78
PCF per pack (cradle-to-gate)	7.4 kg CO2 eq (Cat B)
Note on PCF category	Category B: PCF value (cradle-to-gate) based on the product weight, approximately calculated and self-declared
Customs tariff number	73269098
EAN	4028177233355
ETIM 9	EC002620
ECLASS 8.0	27189261

# Tender text

Gland plate module, vented

For W: 800 mm,

Depth: 237,5 mm

For TS, TS IT, SE, TX CableNet

For cable entry with brush

Module plate: Sheet steel

Brush strip: UL 94-HB, halogen-free