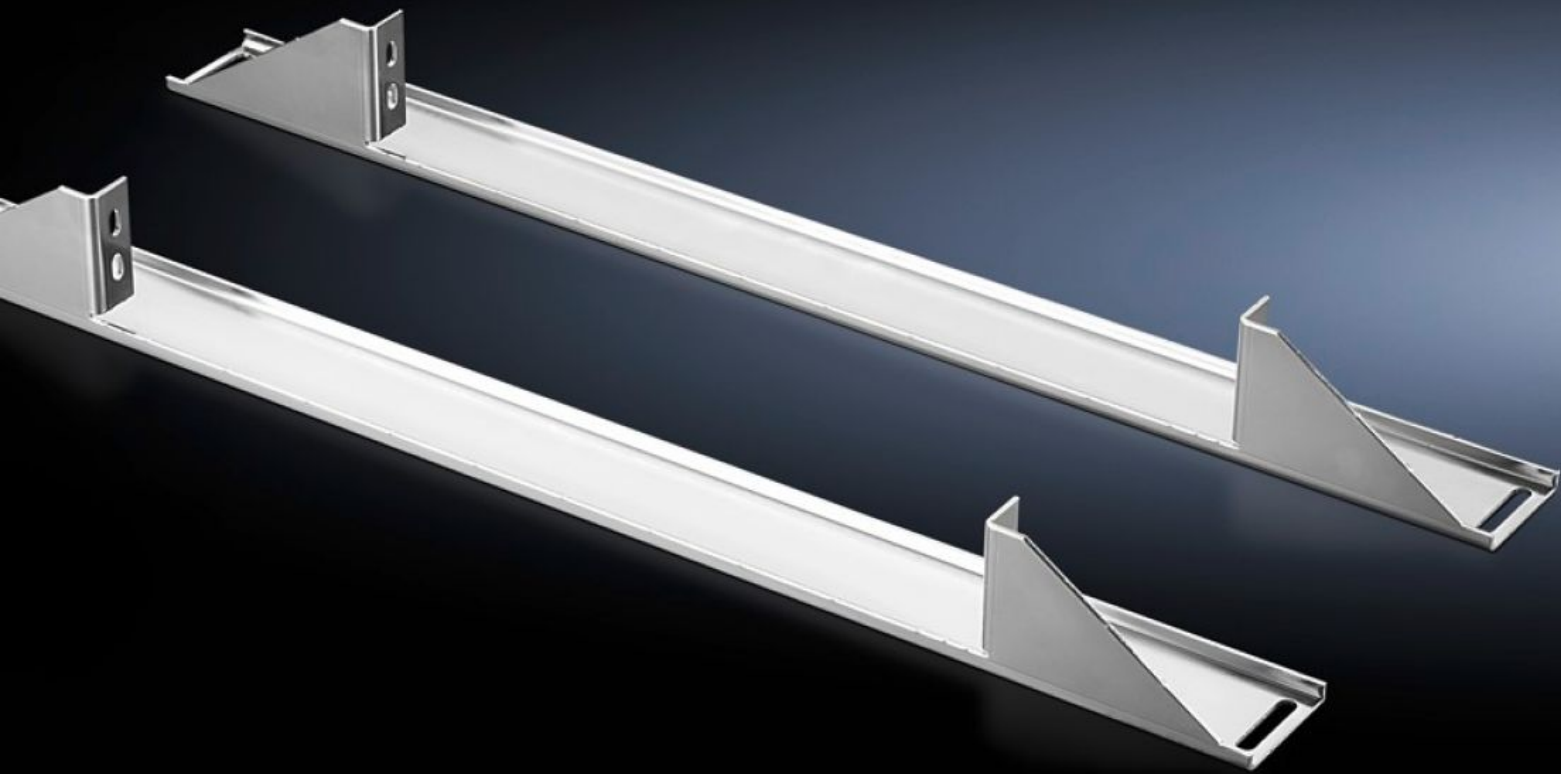


# Rittal – The System.

Faster – better – everywhere.



## DK 7827.480 Depth stays for TS

State: 4/06/2026 (Source: [rittal.com/uk-en](http://rittal.com/uk-en))

ENCLOSURES

POWER DISTRIBUTION

CLIMATE CONTROL

IT INFRASTRUCTURE

SOFTWARE & SERVICES

FRIEDHELM LOH GROUP



# DK 7827.480 - Depth stays for TS for L-shaped mounting angles into TS, 482.6 mm (19")

Ensures optimum clearance at the sides for cable routing, depth-variable attachment is facilitated by the attachment slots.

## Features

Model No.	DK 7827.480
Design	Installation position, centre
Product description	The installation brackets are screw-fastened to the enclosure frame in the enclosure width. The mounting angle is attached to the bracket at the top and bottom. For partial enclosure configuration, the installation brackets may be attached to the TS punched sections with mounting flanges 17 x 73 mm on the outer attachment level of the enclosure frame.
Benefits	The brackets ensure optimum clearance at the sides for cable routing Depth-variable attachment possible using the attachment slots Suitable for 482.6 mm (19") partial installation
Applications	For upgrading existing TS applications
Material	Sheet steel
Surface finish	Zinc-plated
Supply includes	Assembly parts
To fit	Enclosure type: TS Width: 800 mm
Packs of	2 pc(s).
Net weight	3.38 kg
Gross weight	3.6 kg
Customs tariff number	73182900
ETIM 9	EC002625
ECLASS 8.0	27189234

# Features

---

Product description

DK-TS Einbauwinkel, For L-shaped mounting angles into TS, 482.6 mm (19"), For W: 800 mm

## Tender text

19" TS 8 installation bracket, central installation position

Material: Sheet steel, zinc-plated, passivated